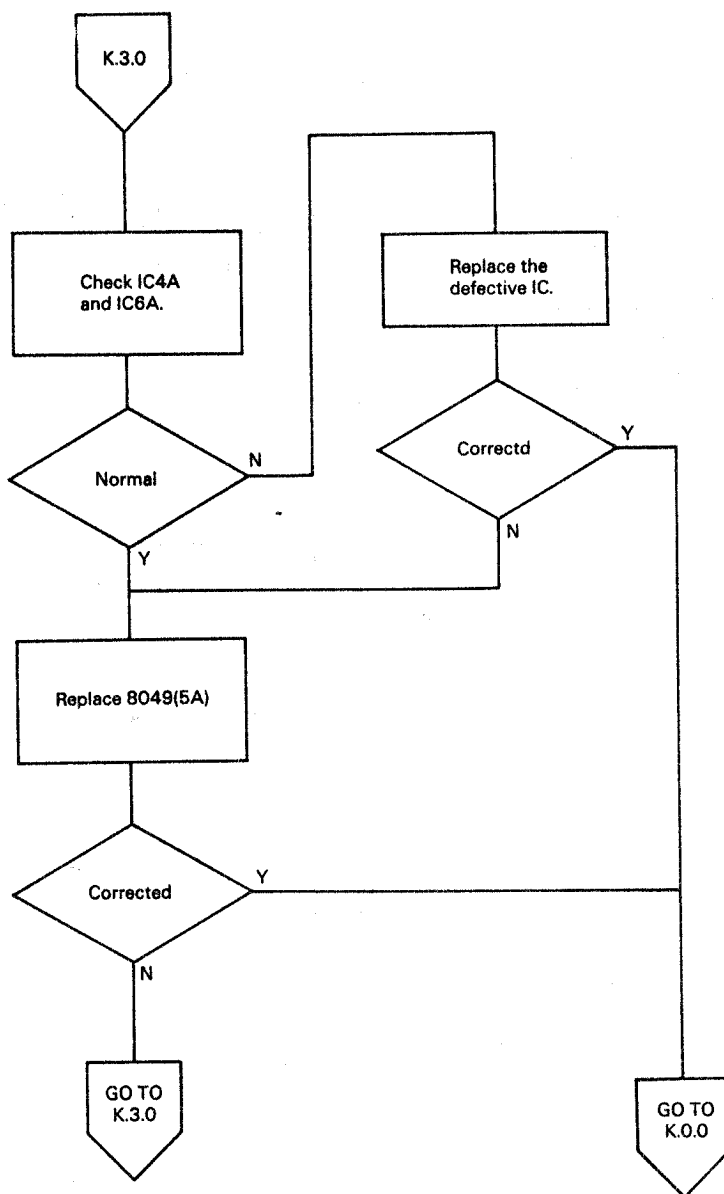
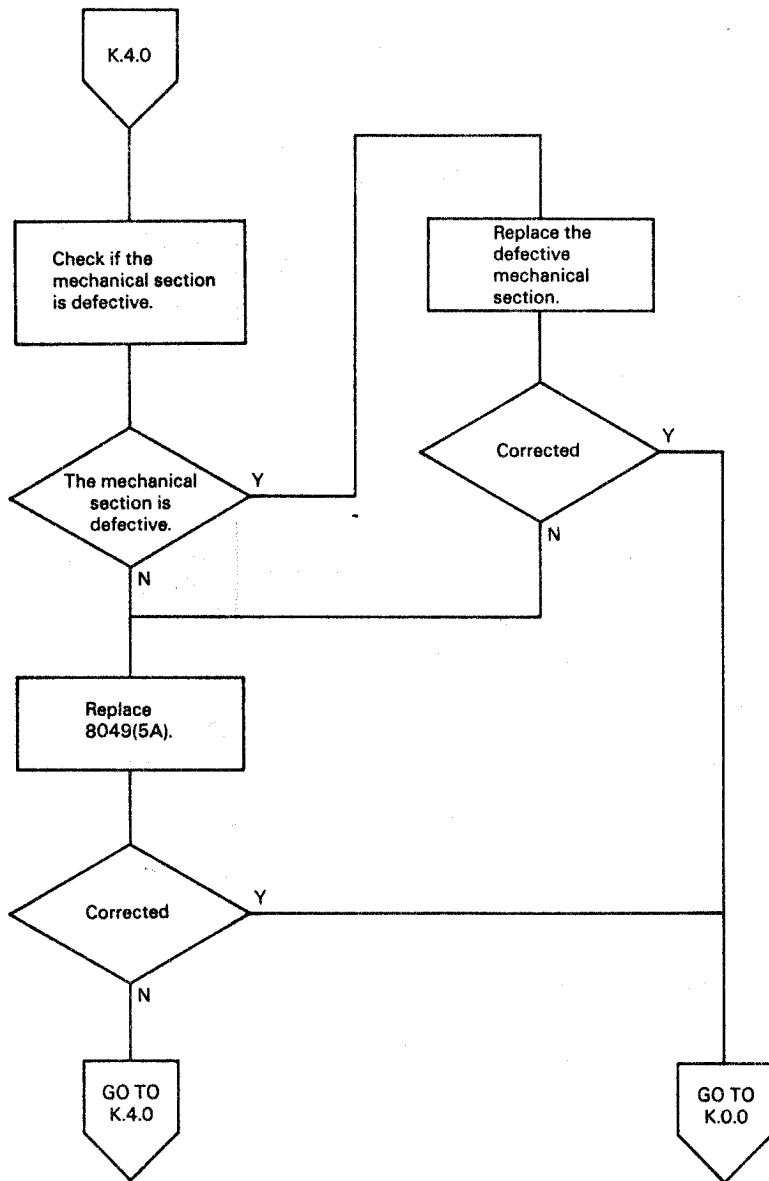


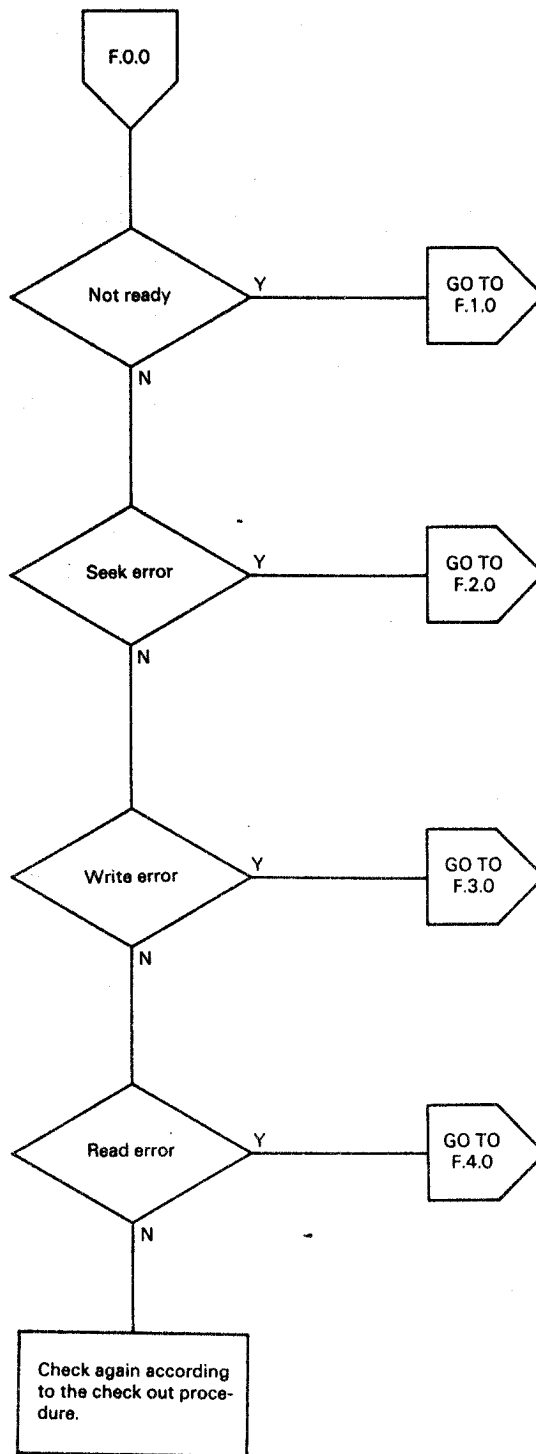
Wrong key input is made.



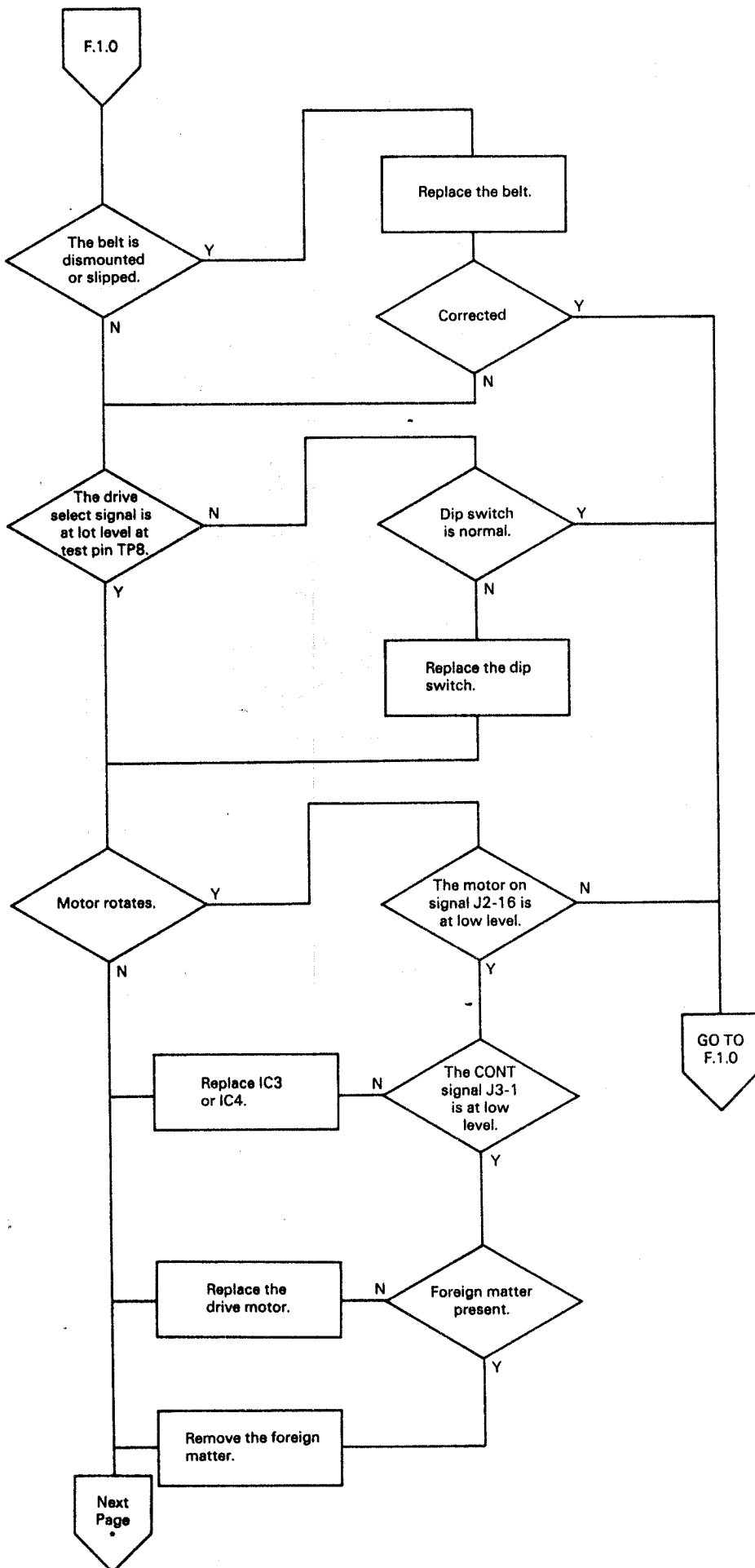
Repeat function fails to operate.

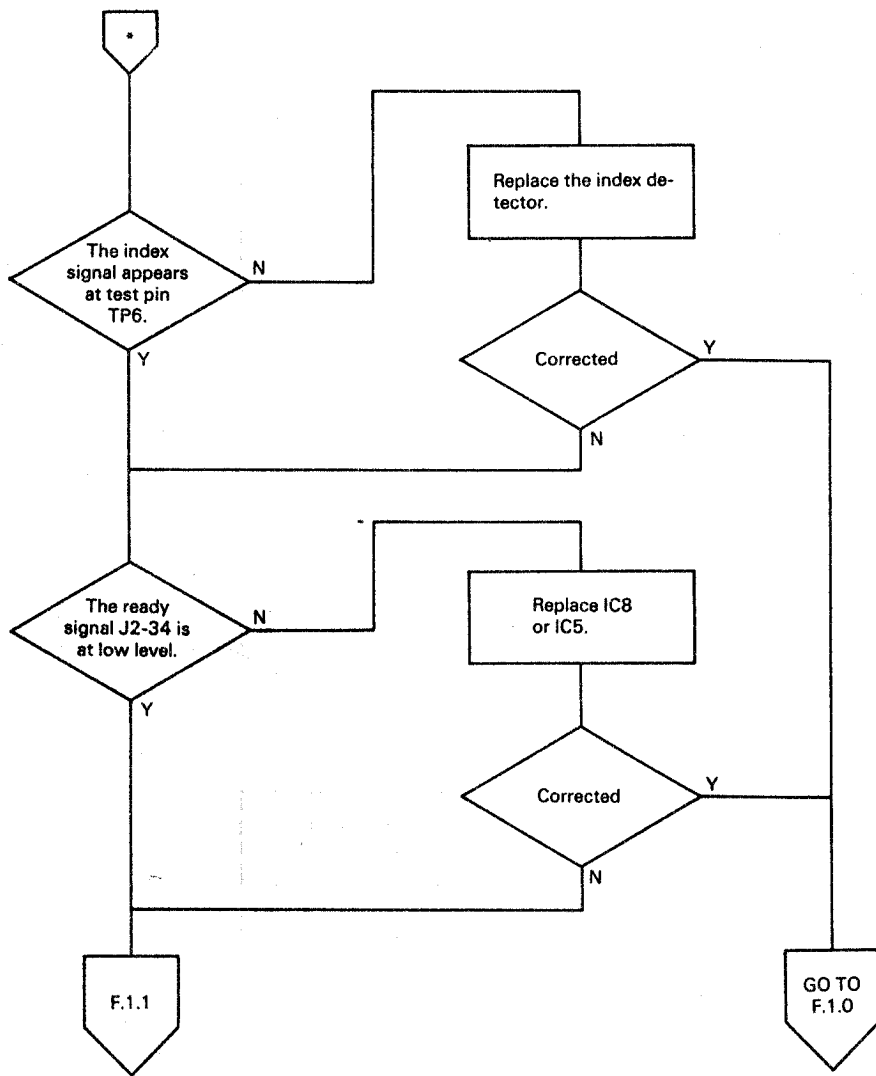


### 5.3.6 FDD unit level troubleshooting guideline table

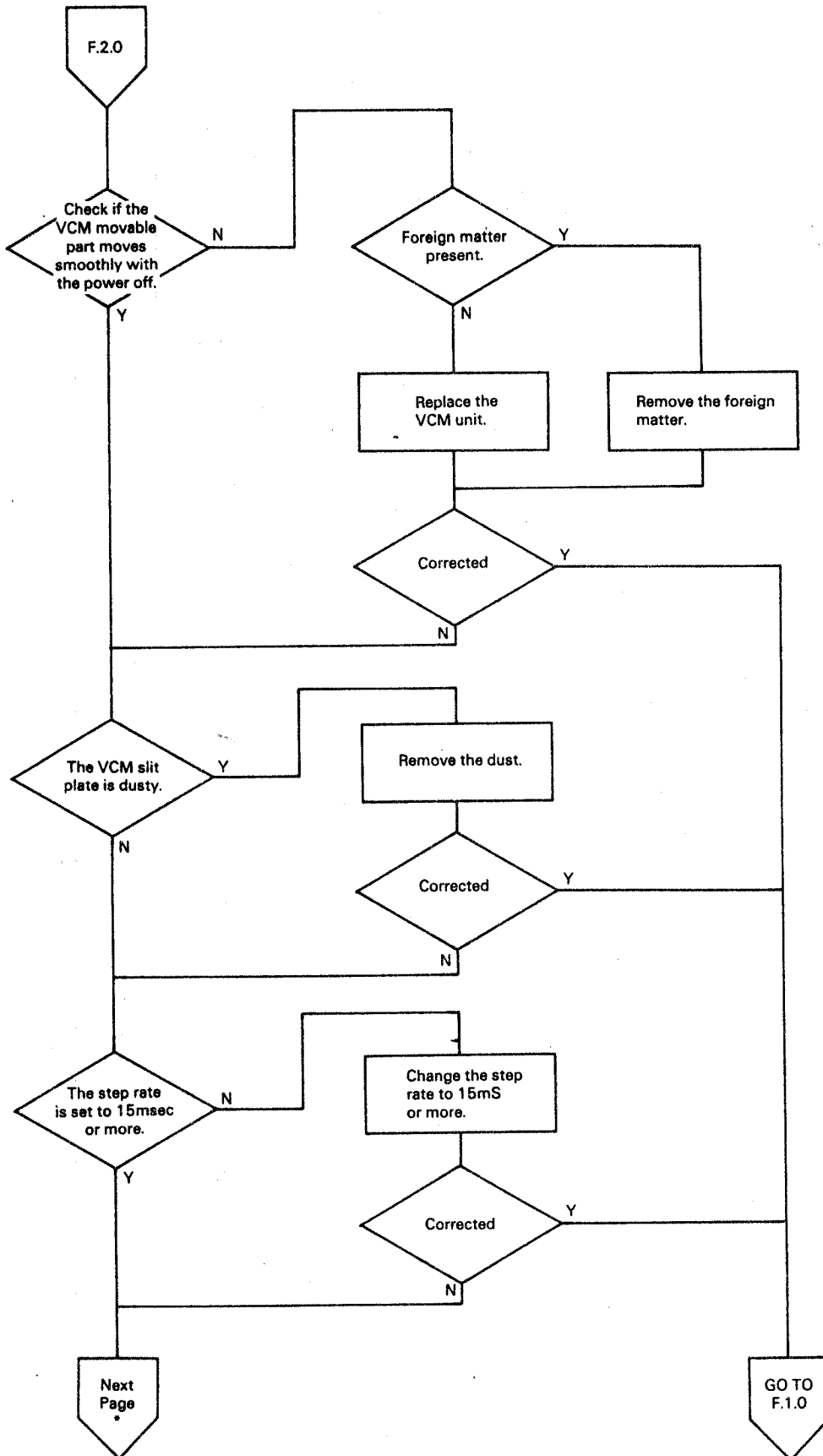


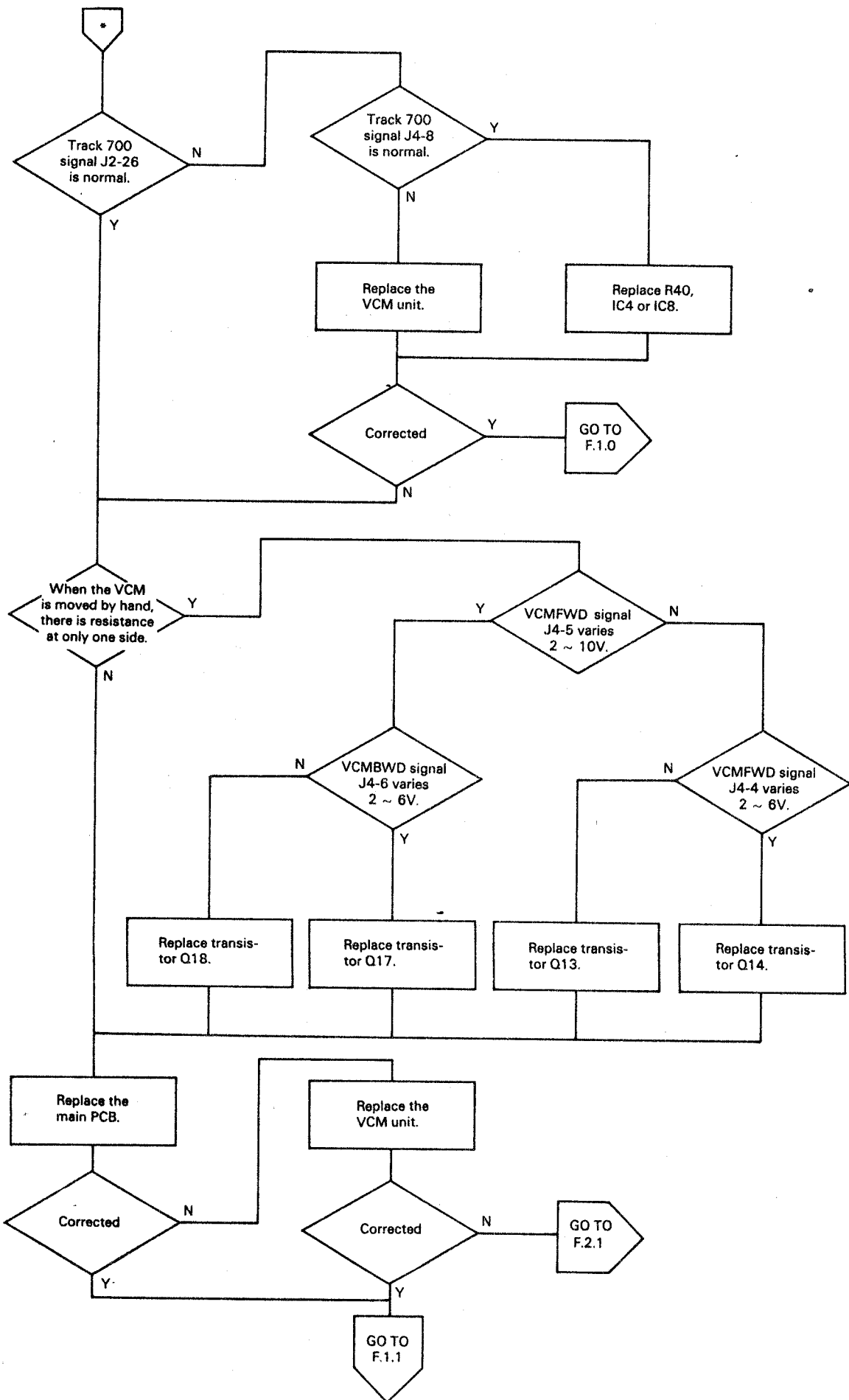
Not Ready



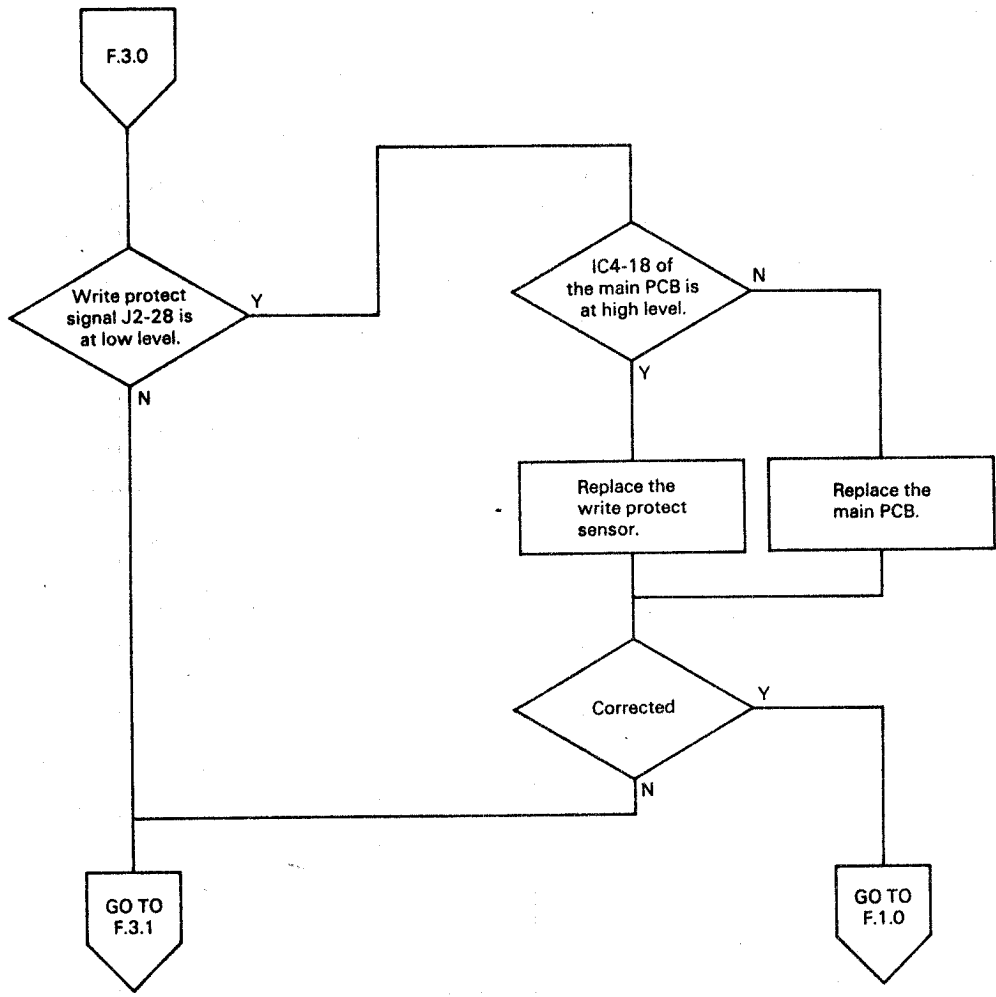


Seek error

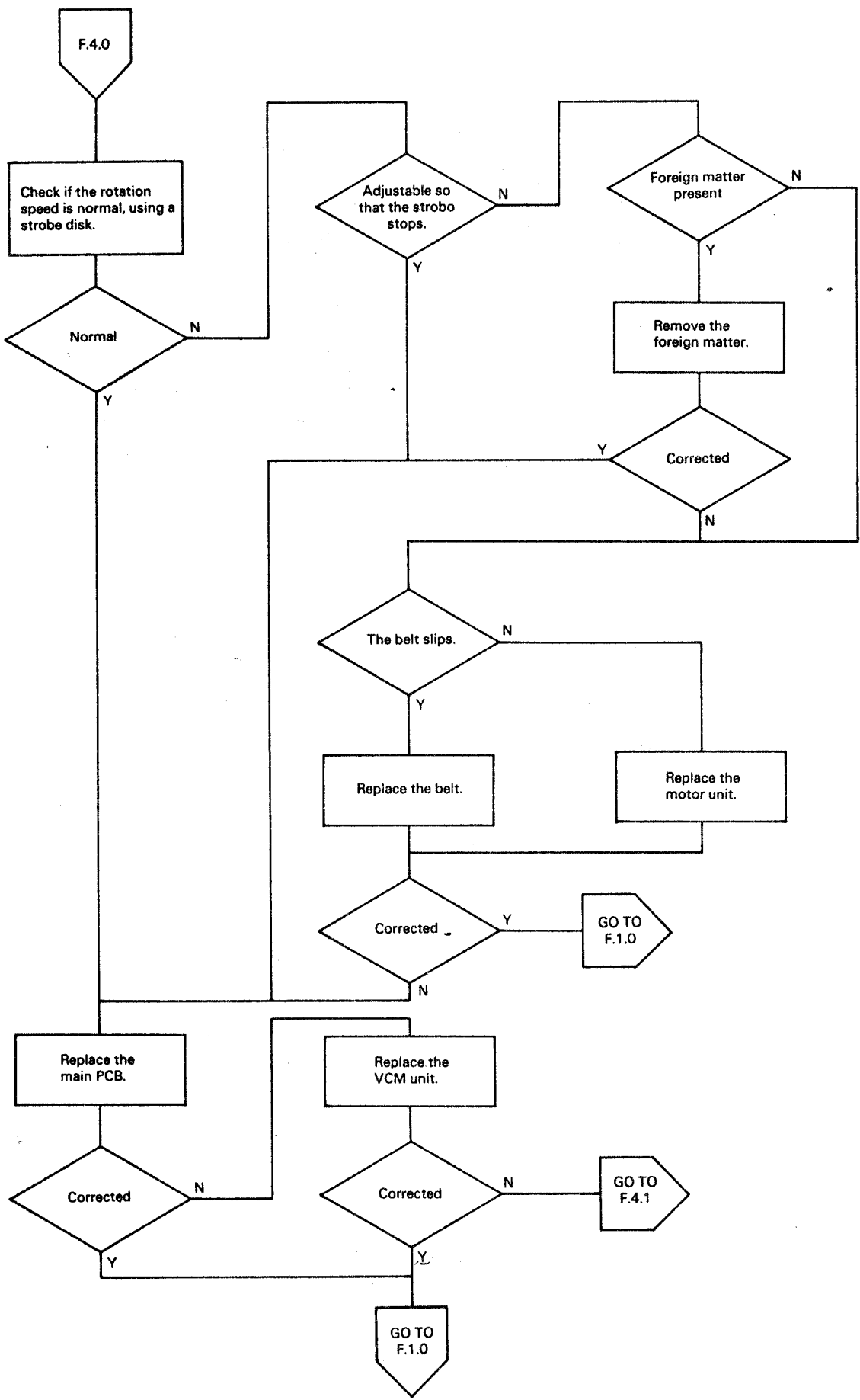


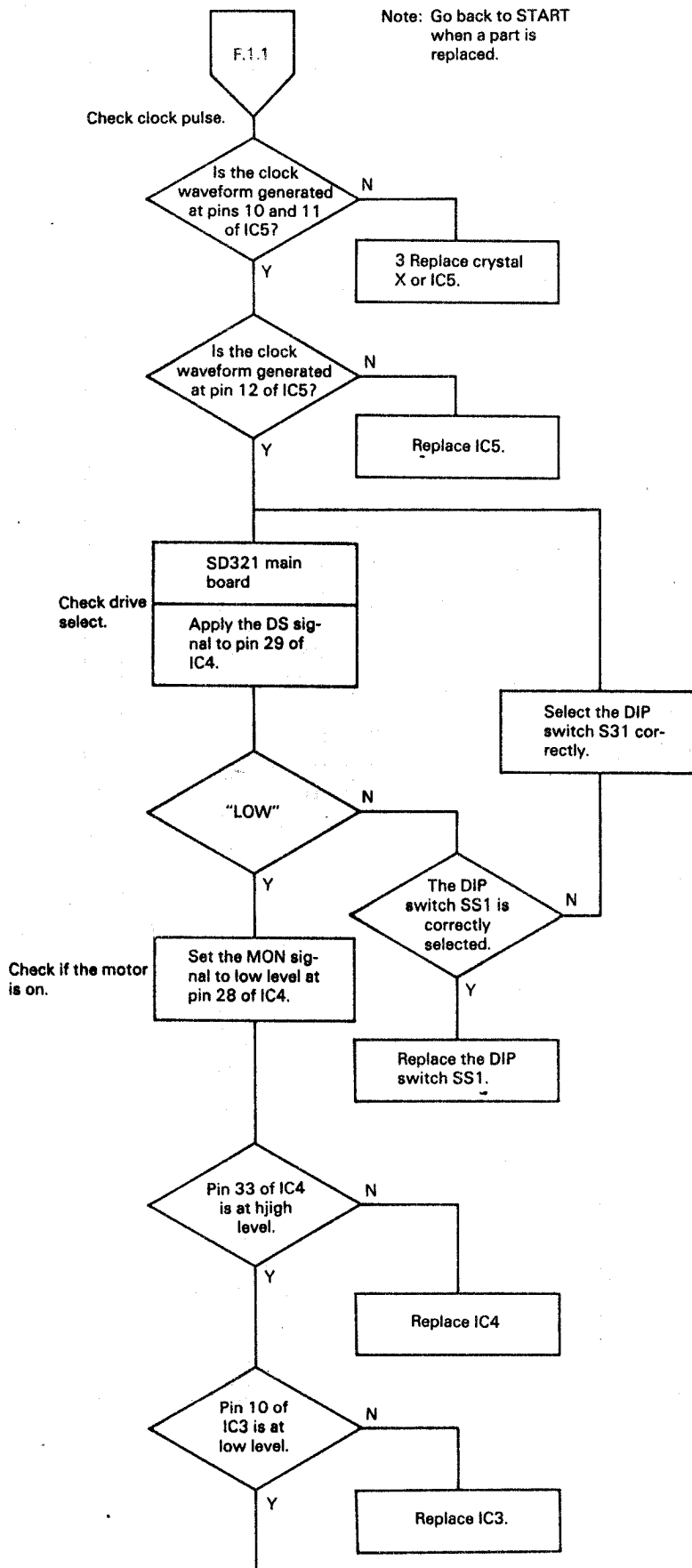


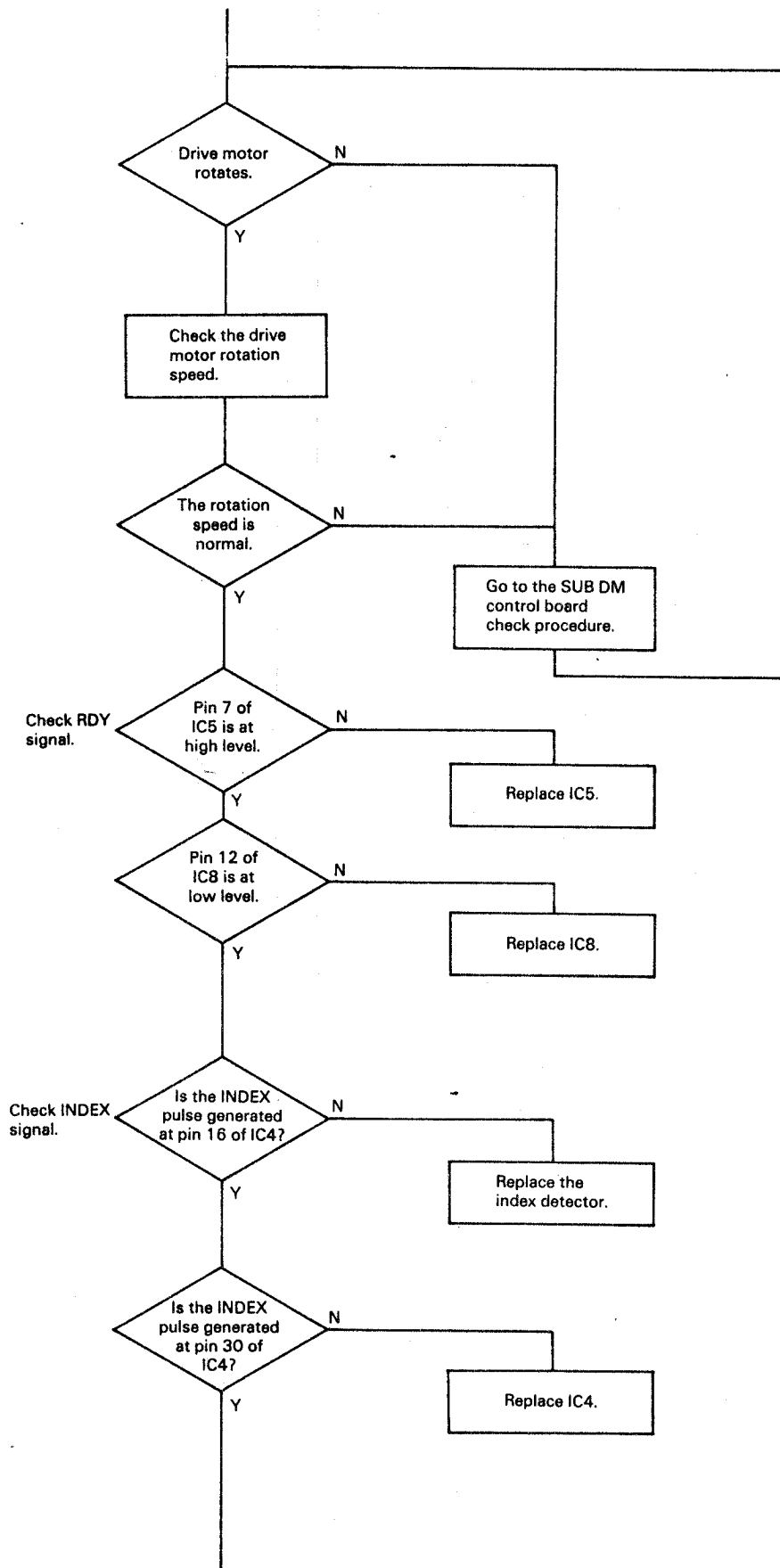
**Write error**

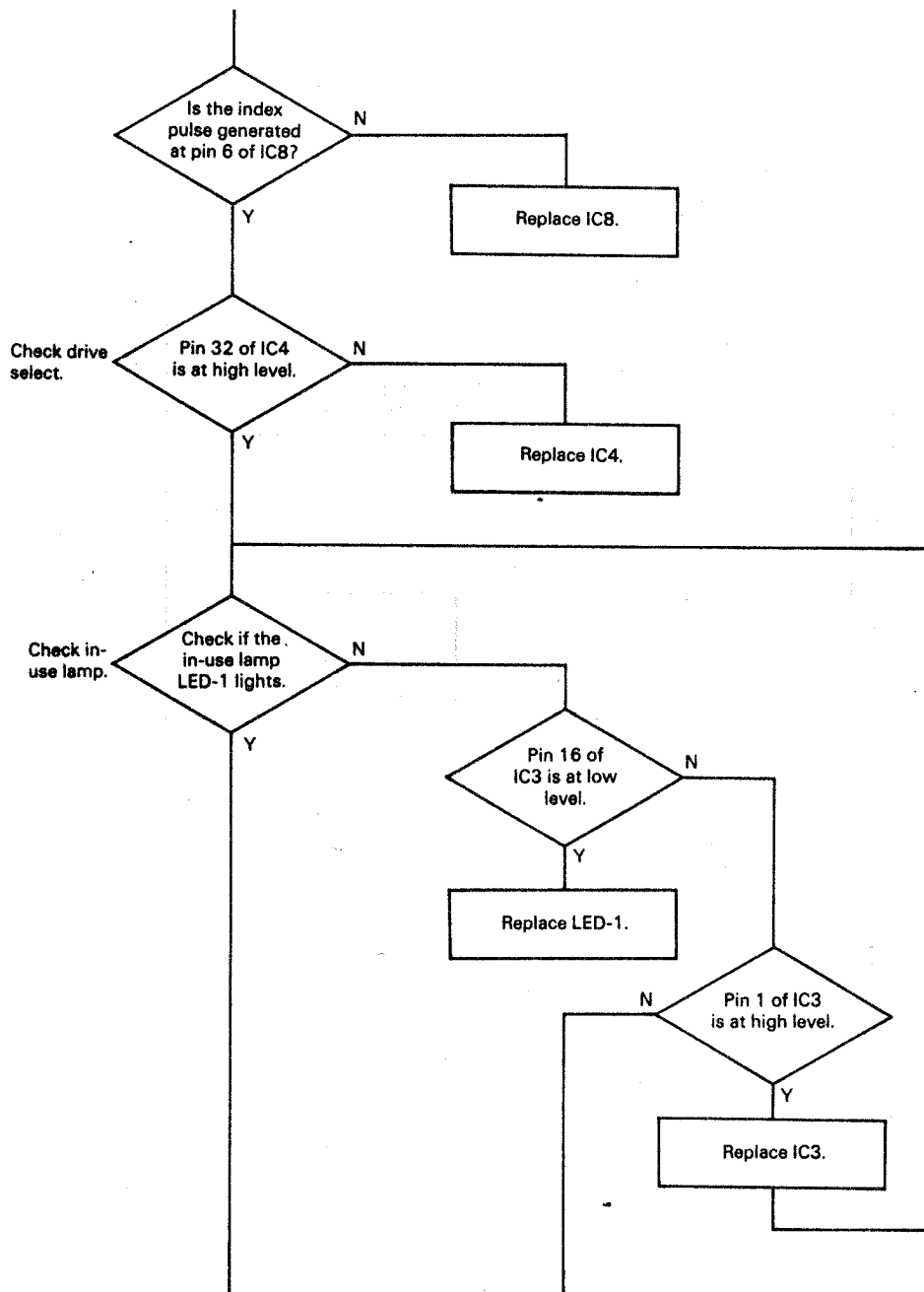


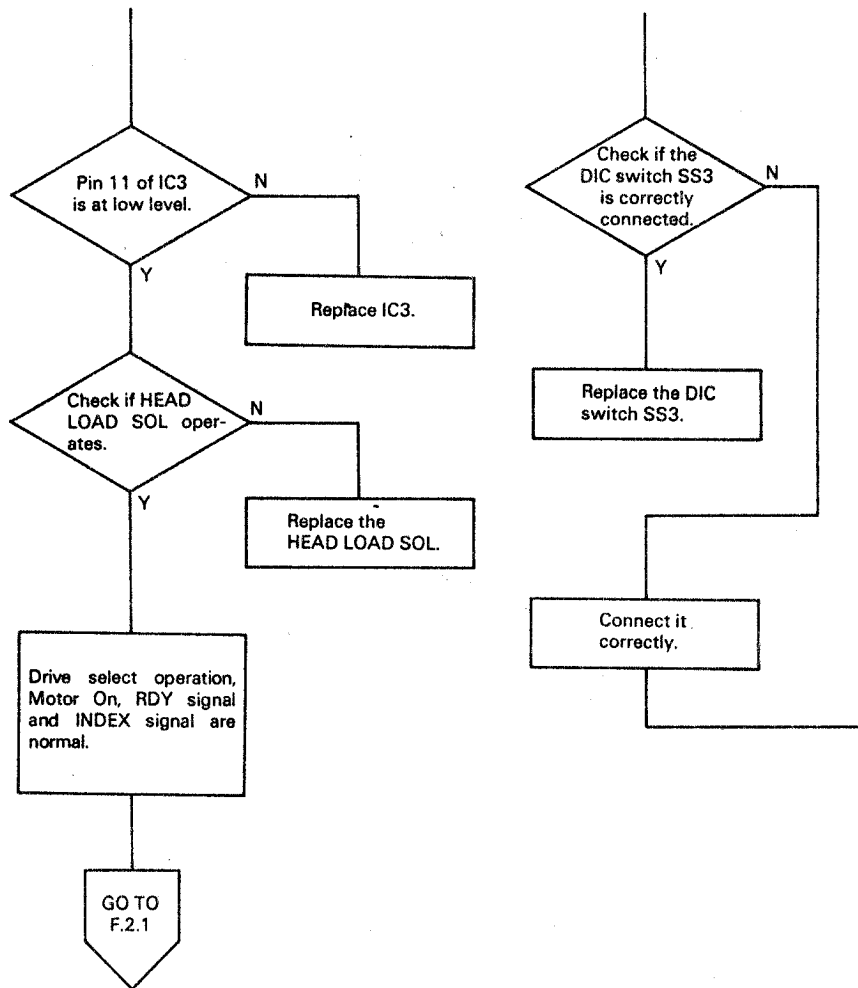
**Read error**

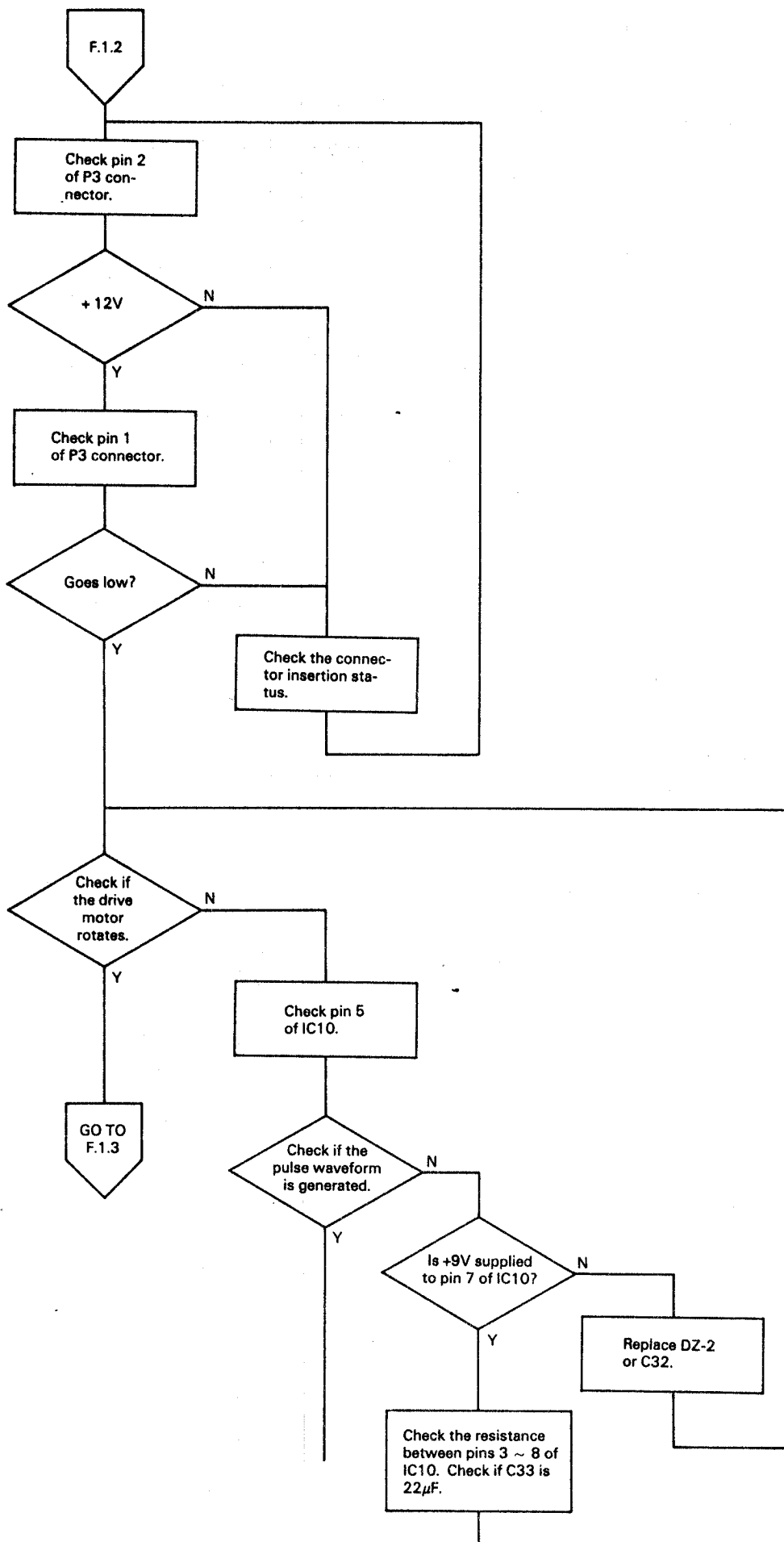


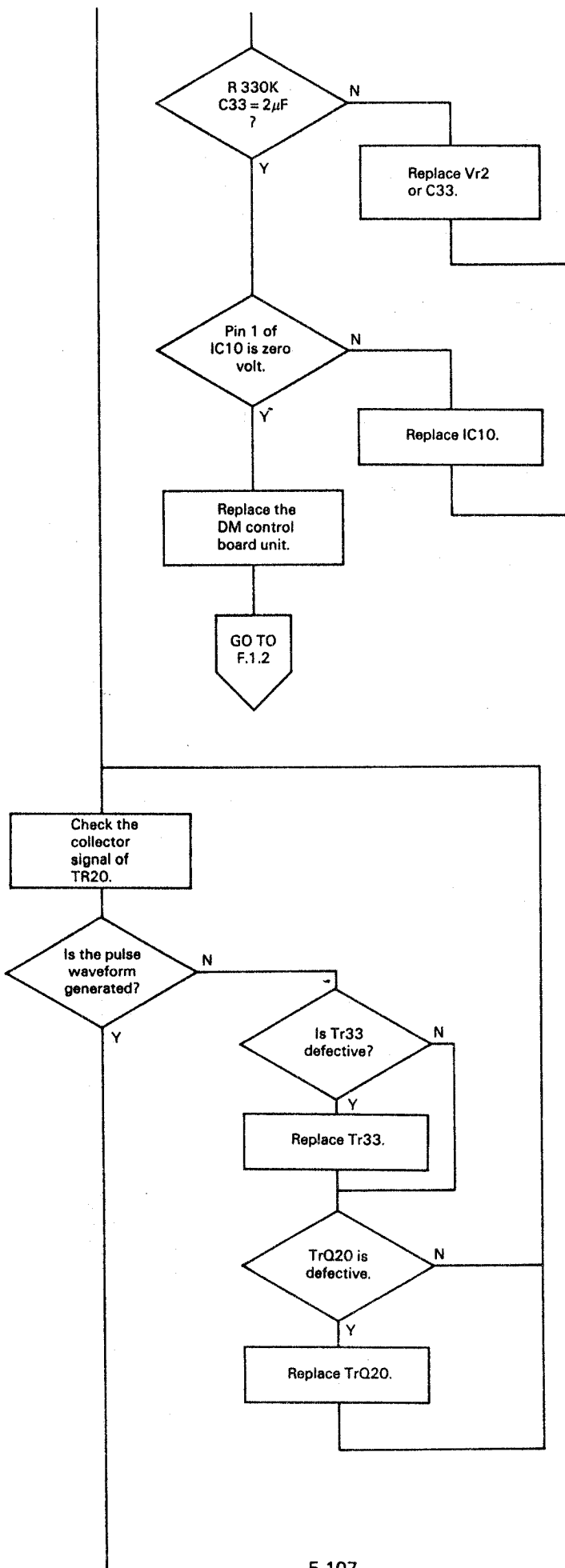


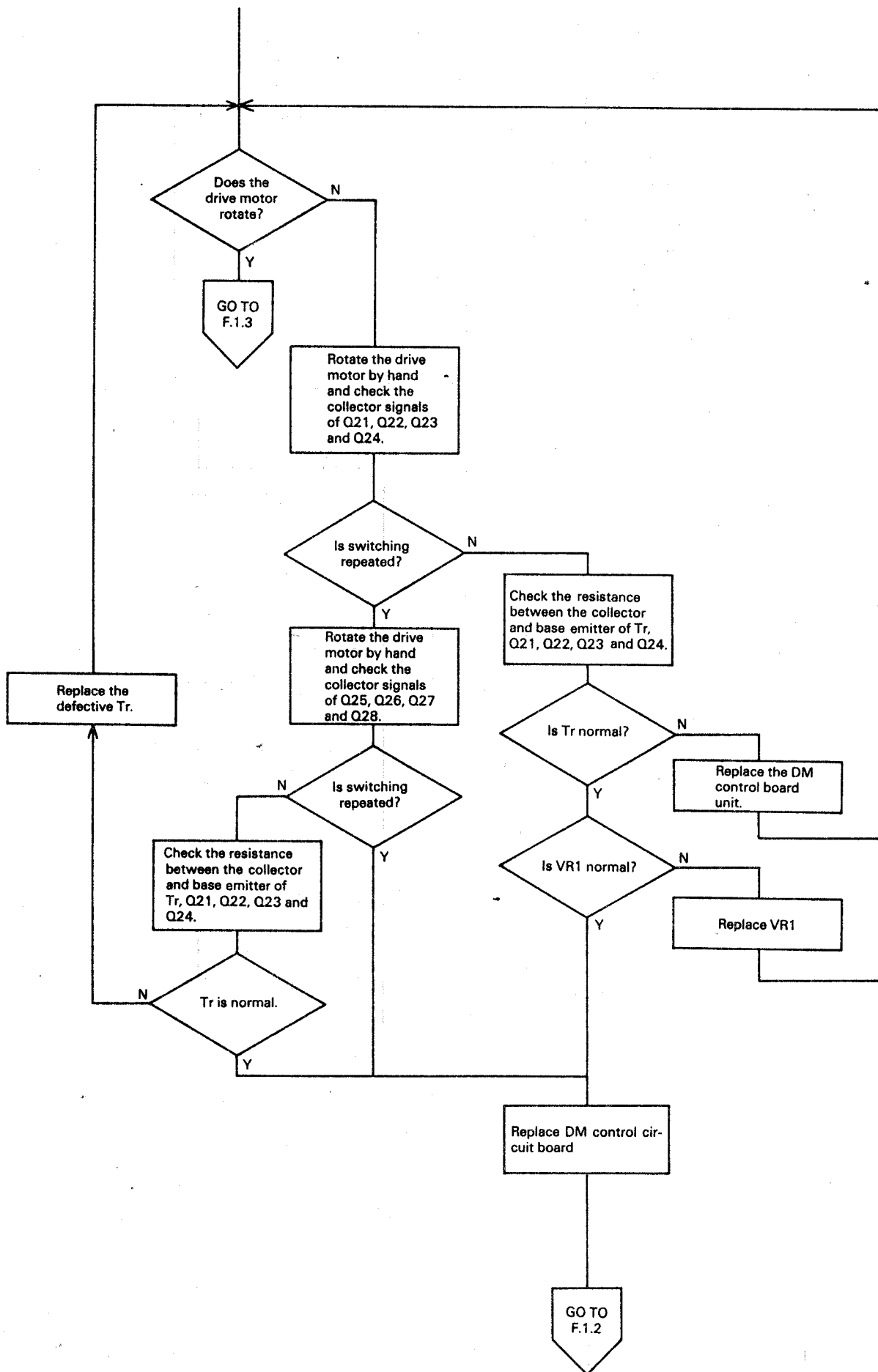


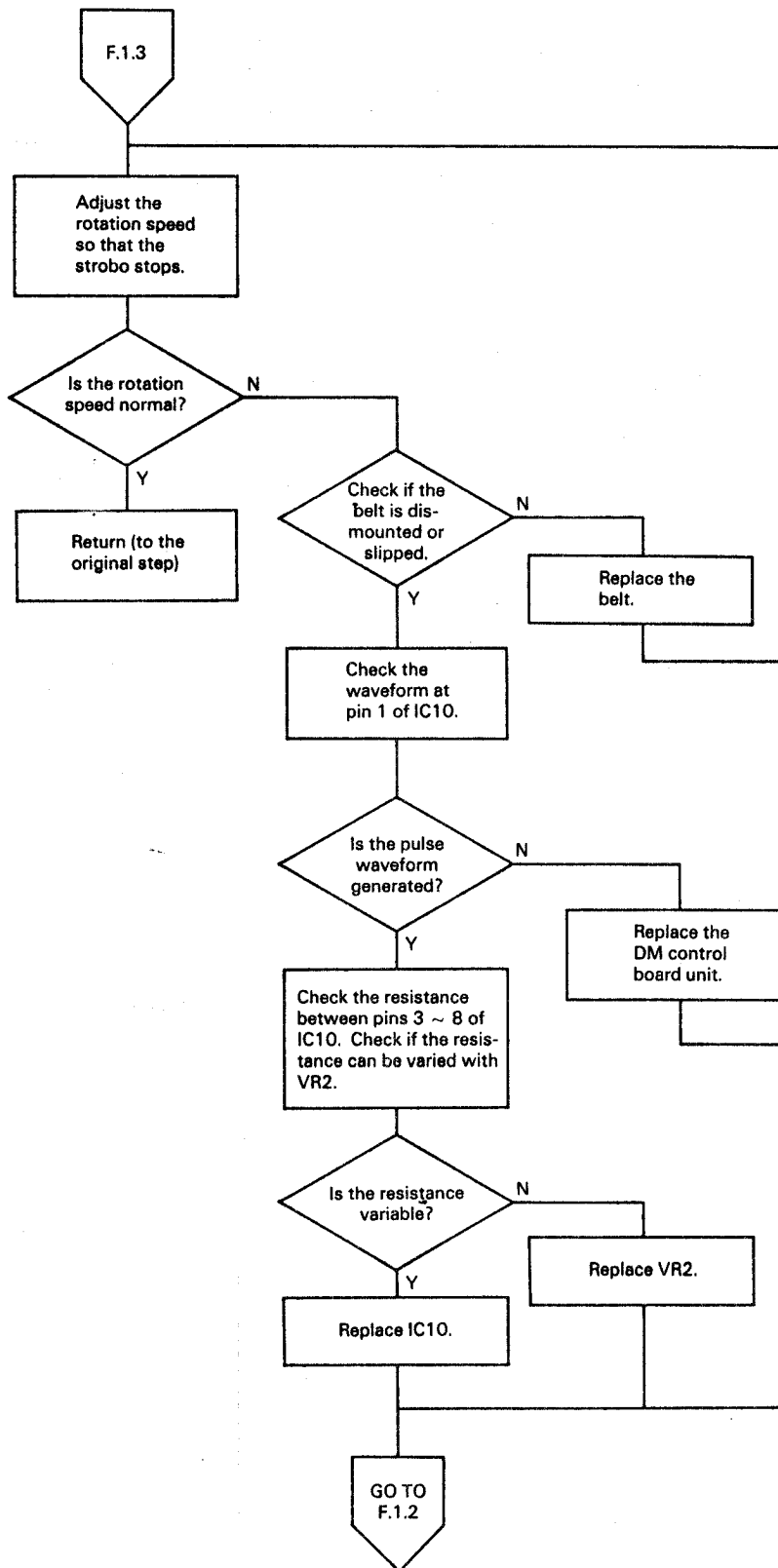


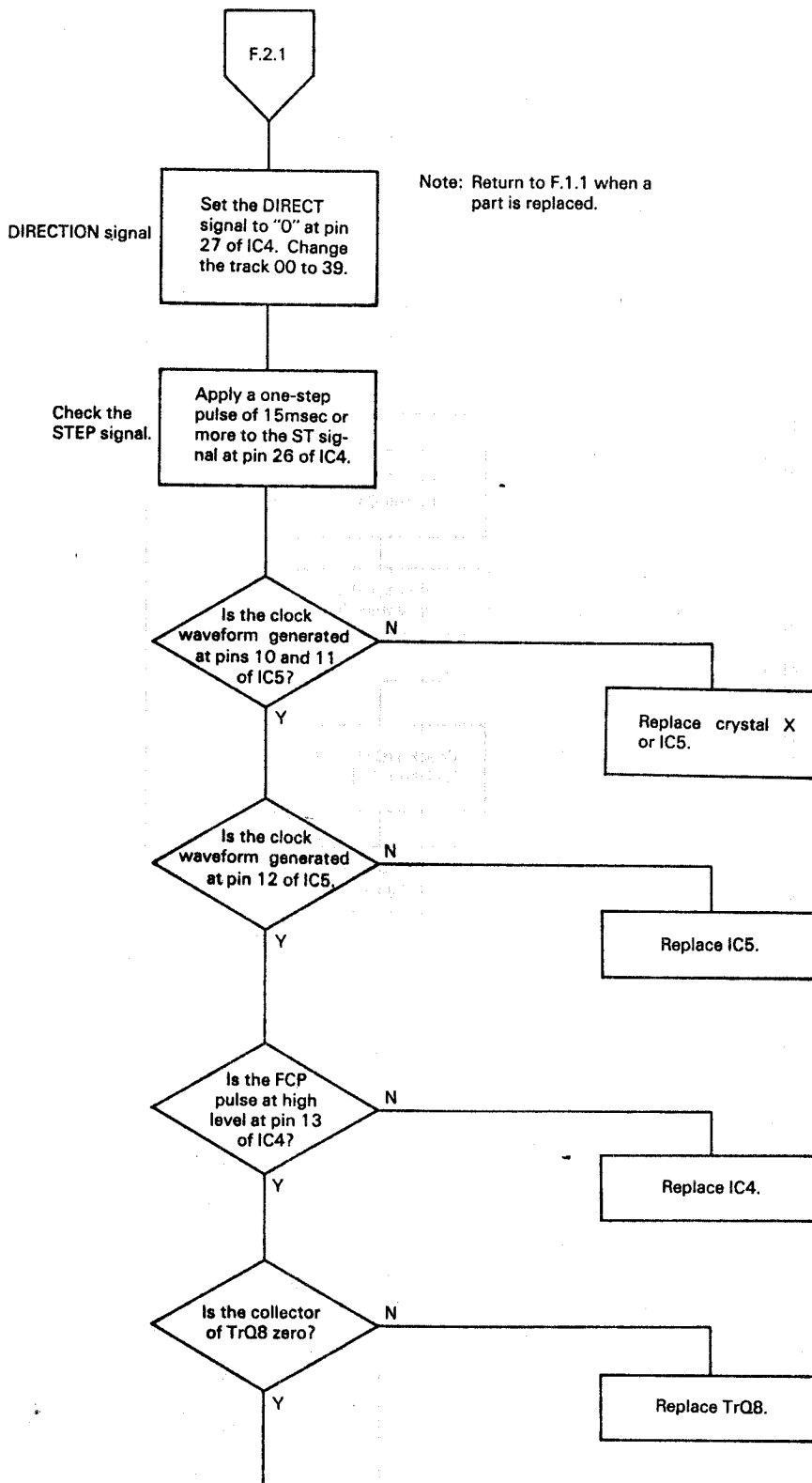


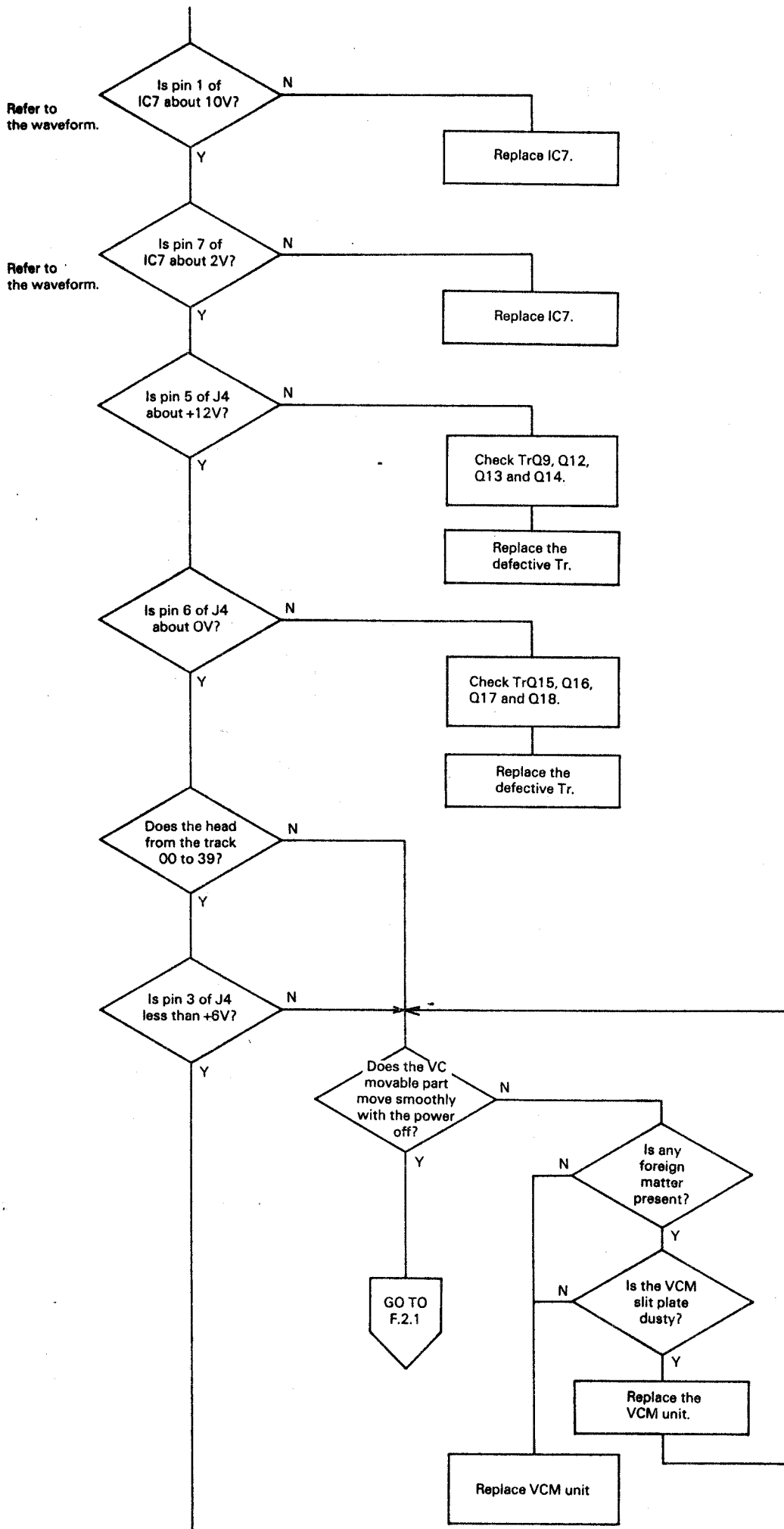


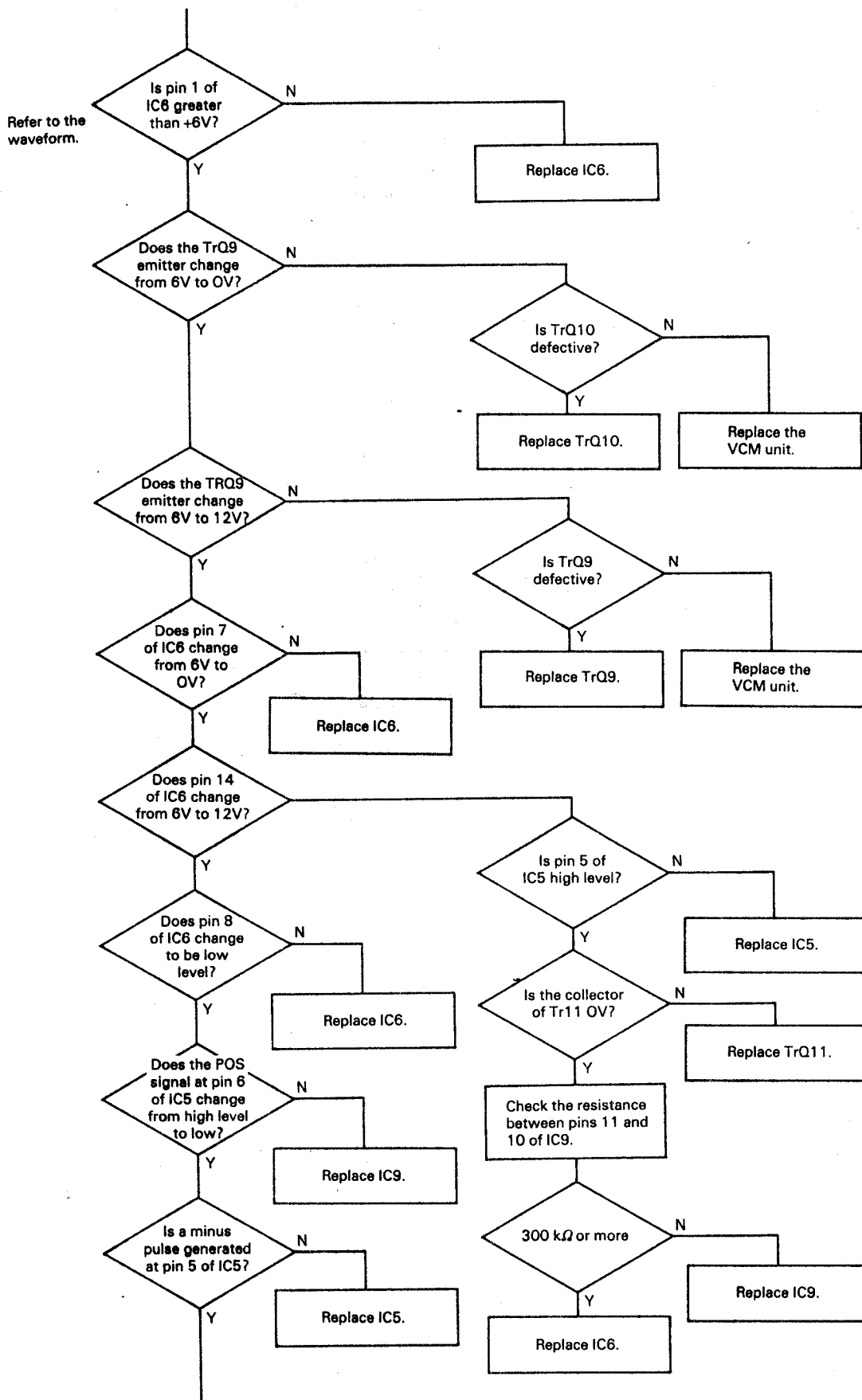


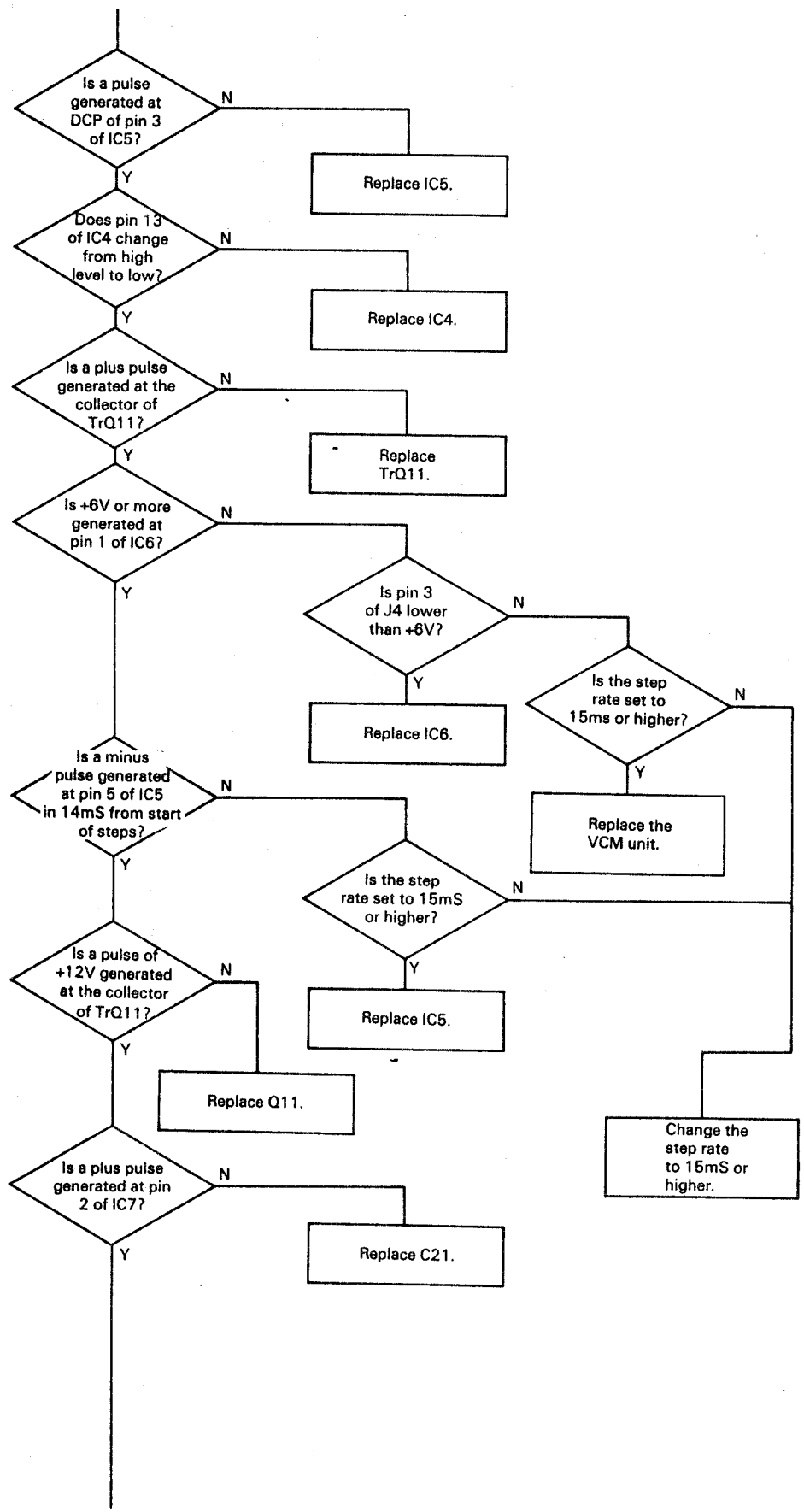


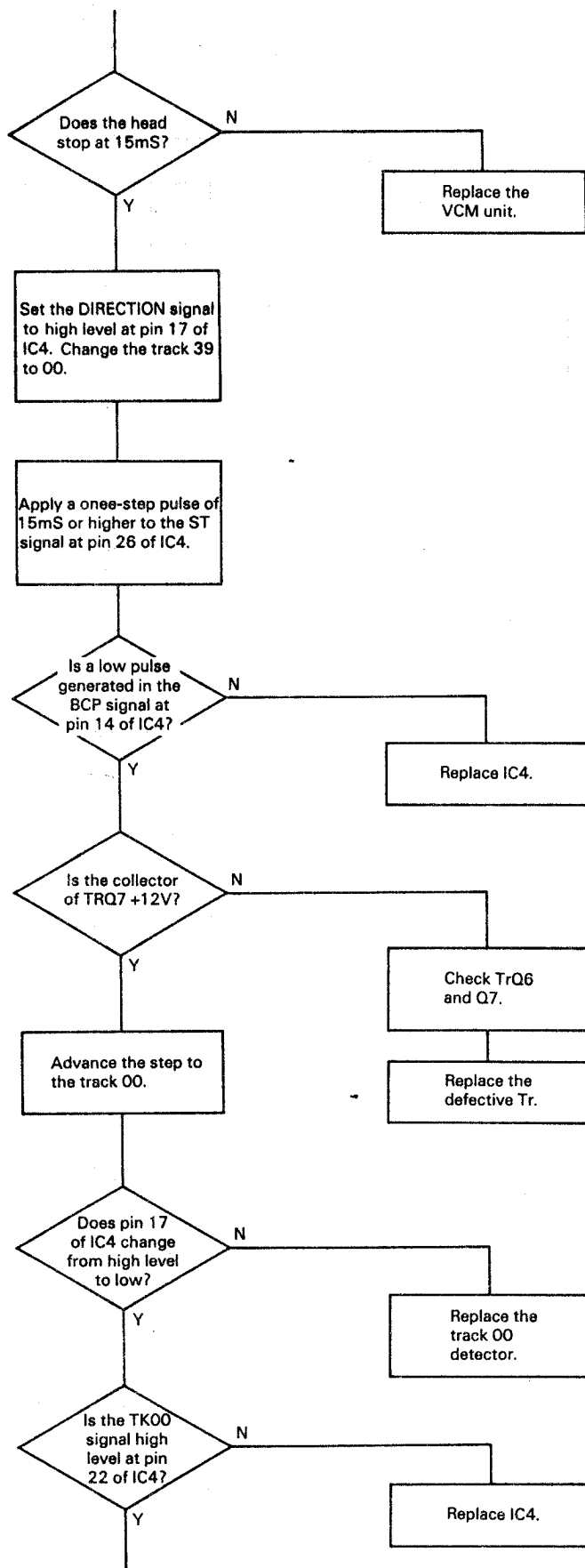


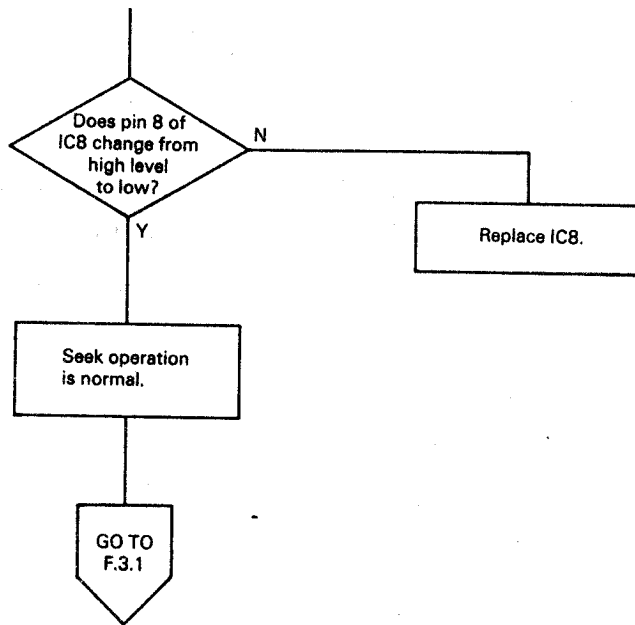


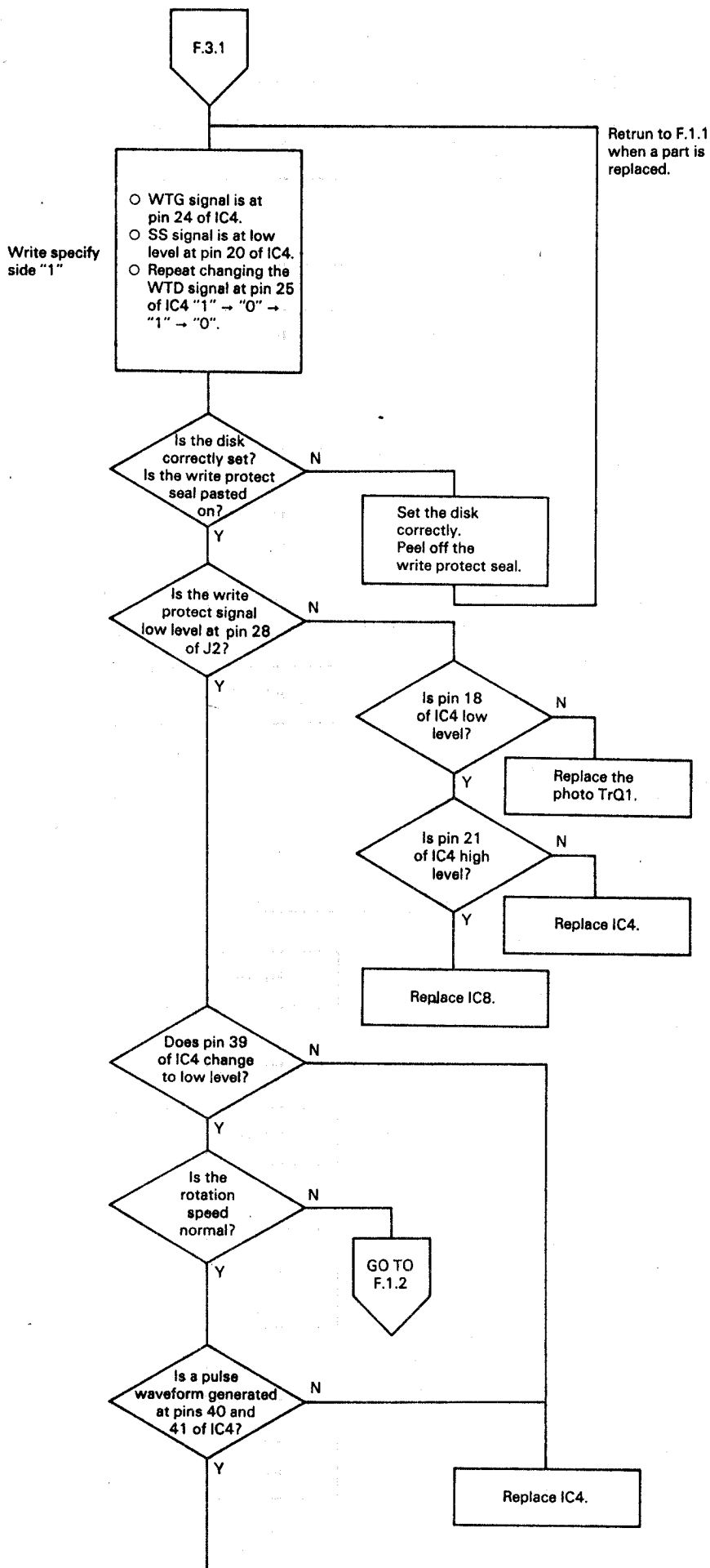


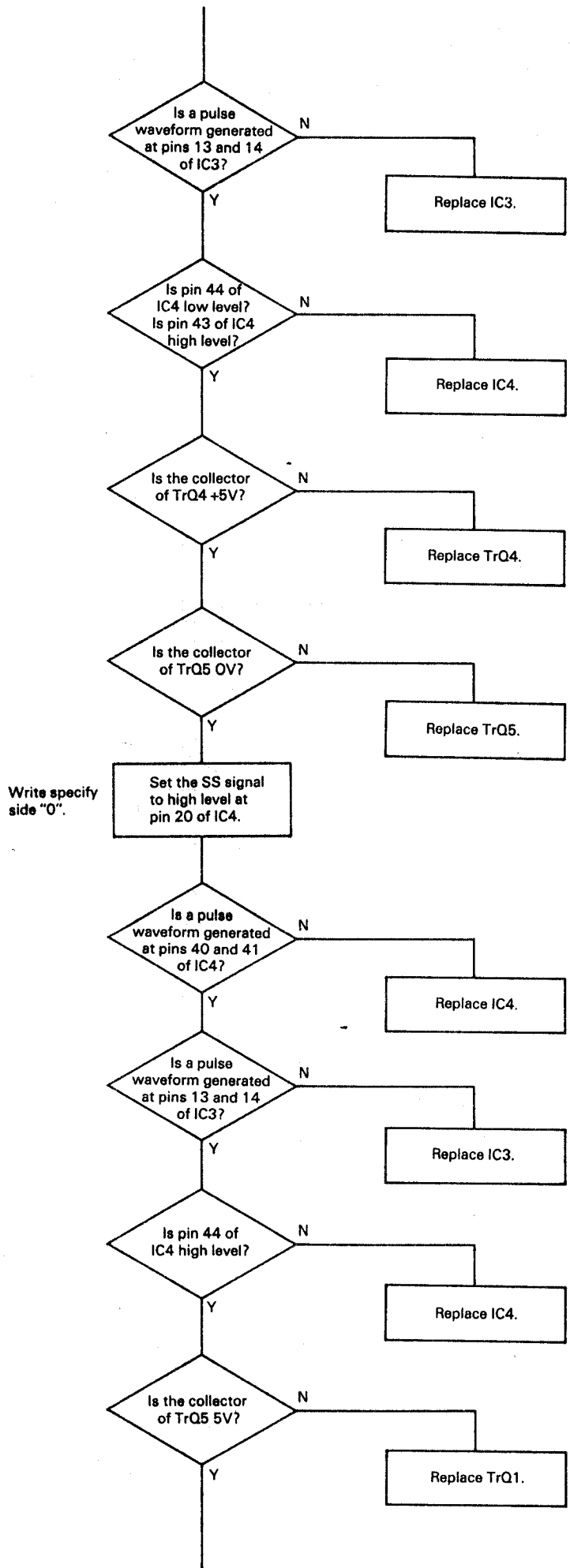


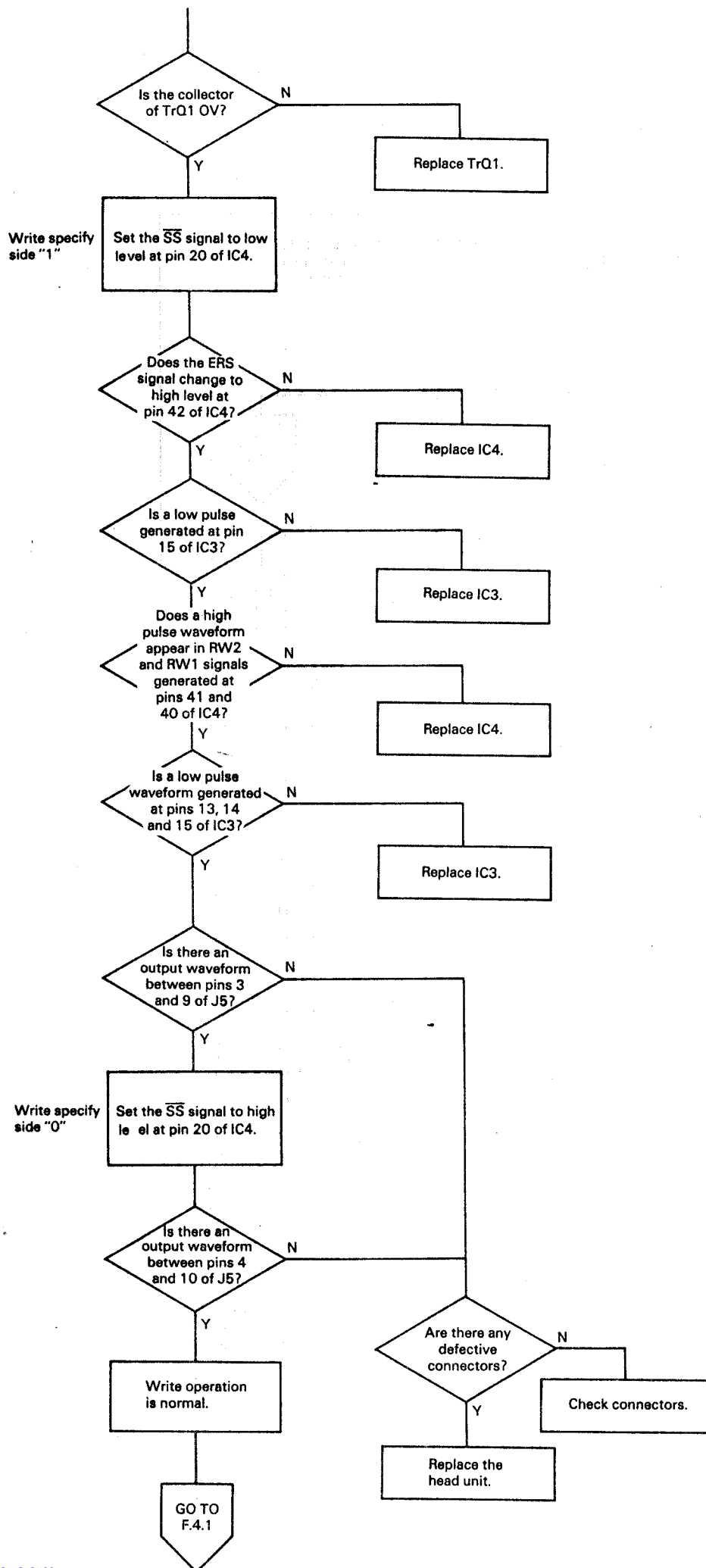


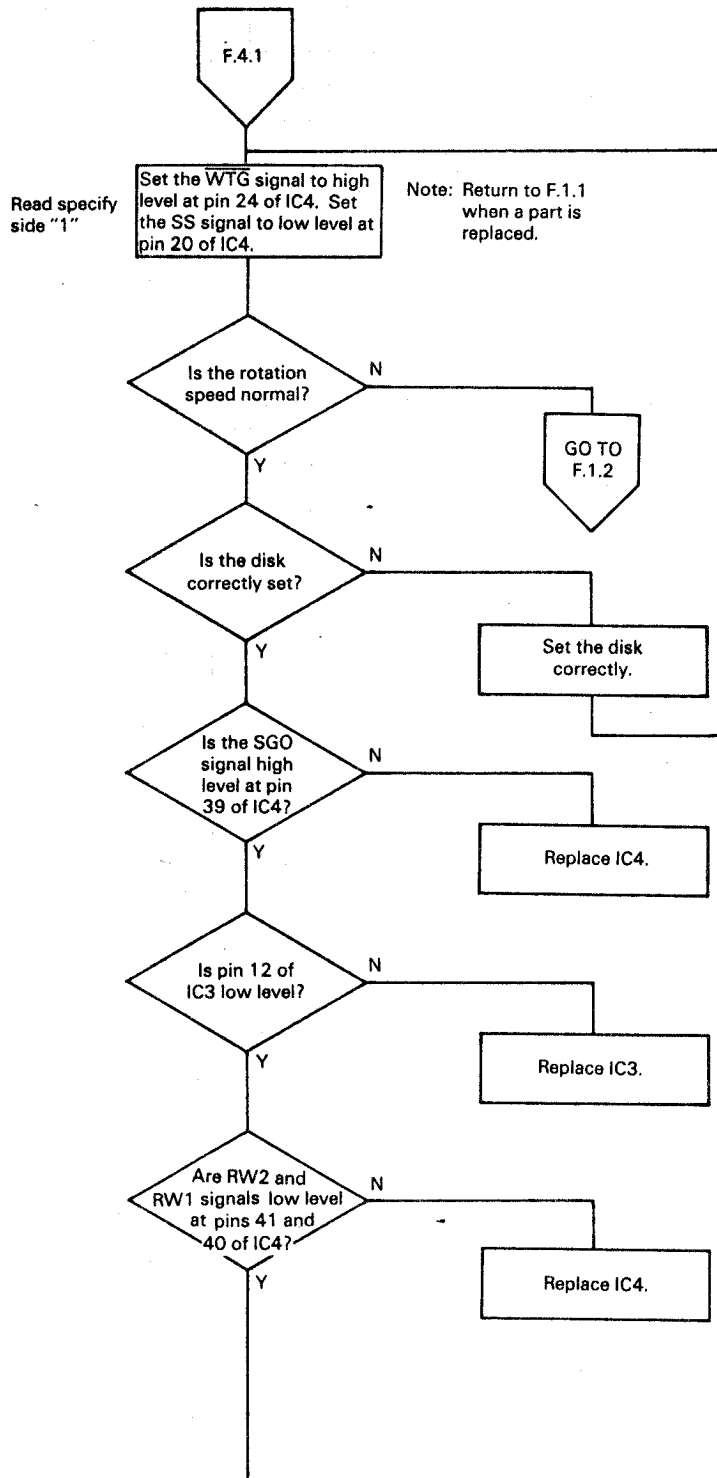


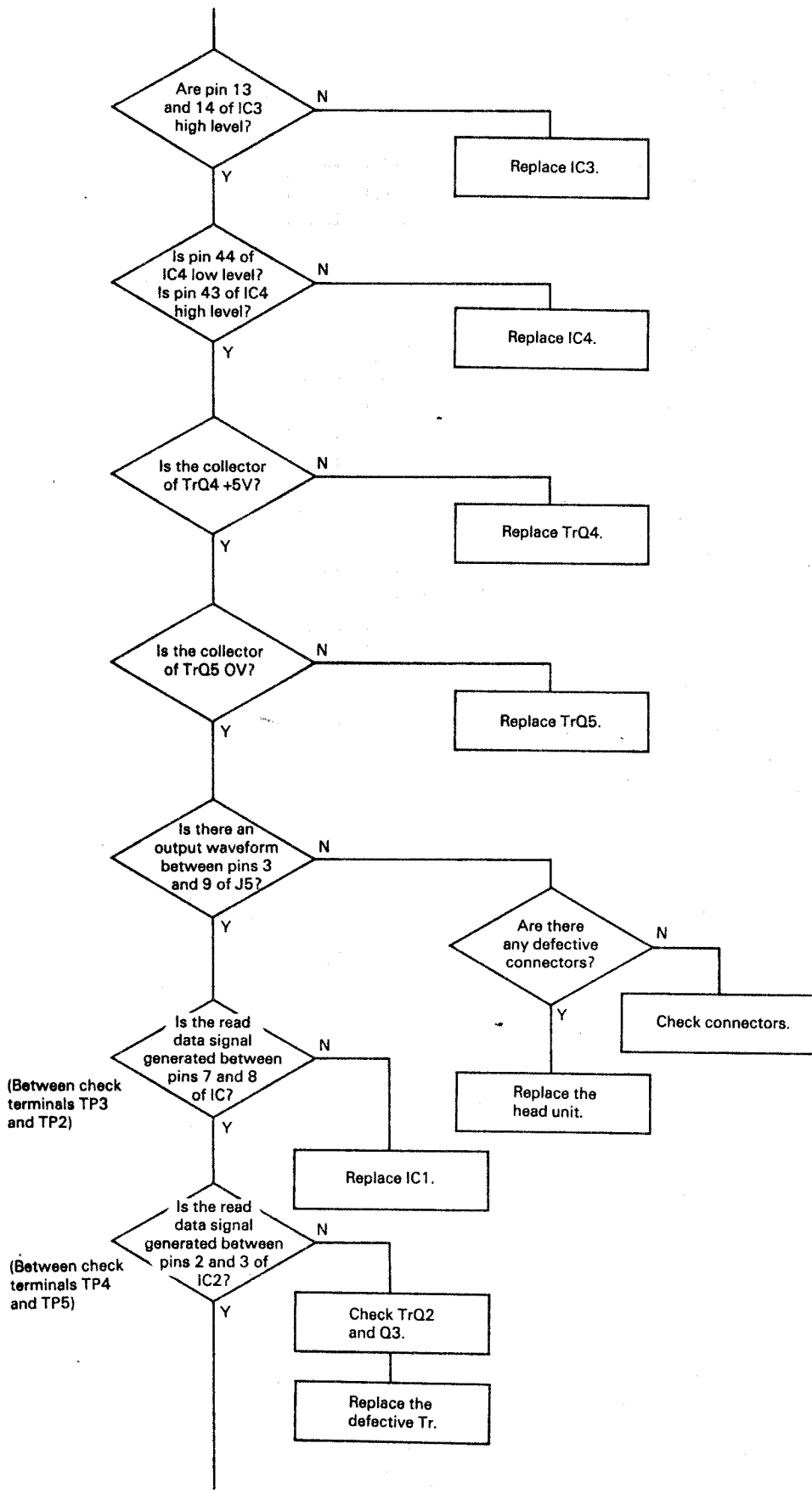


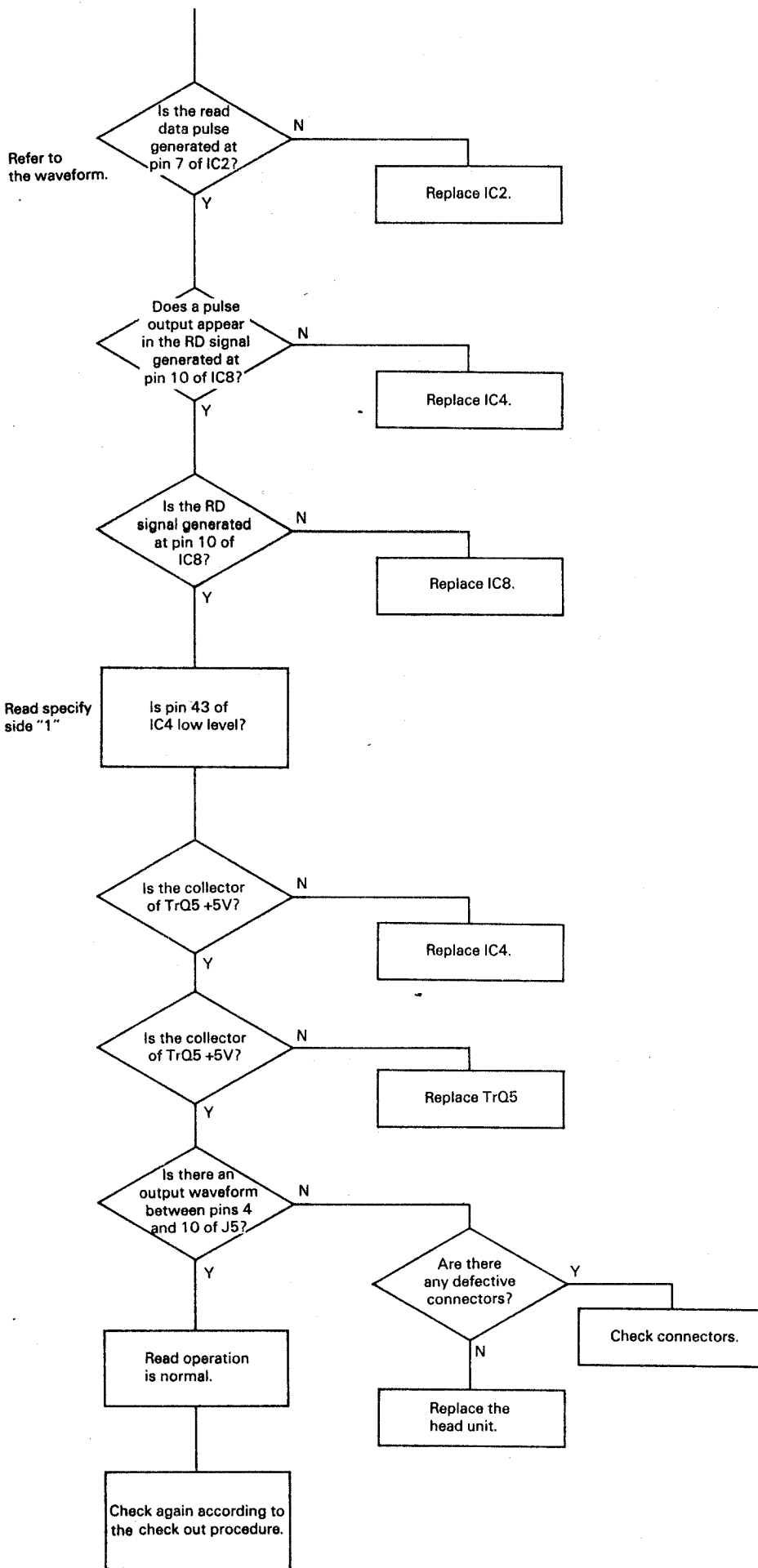






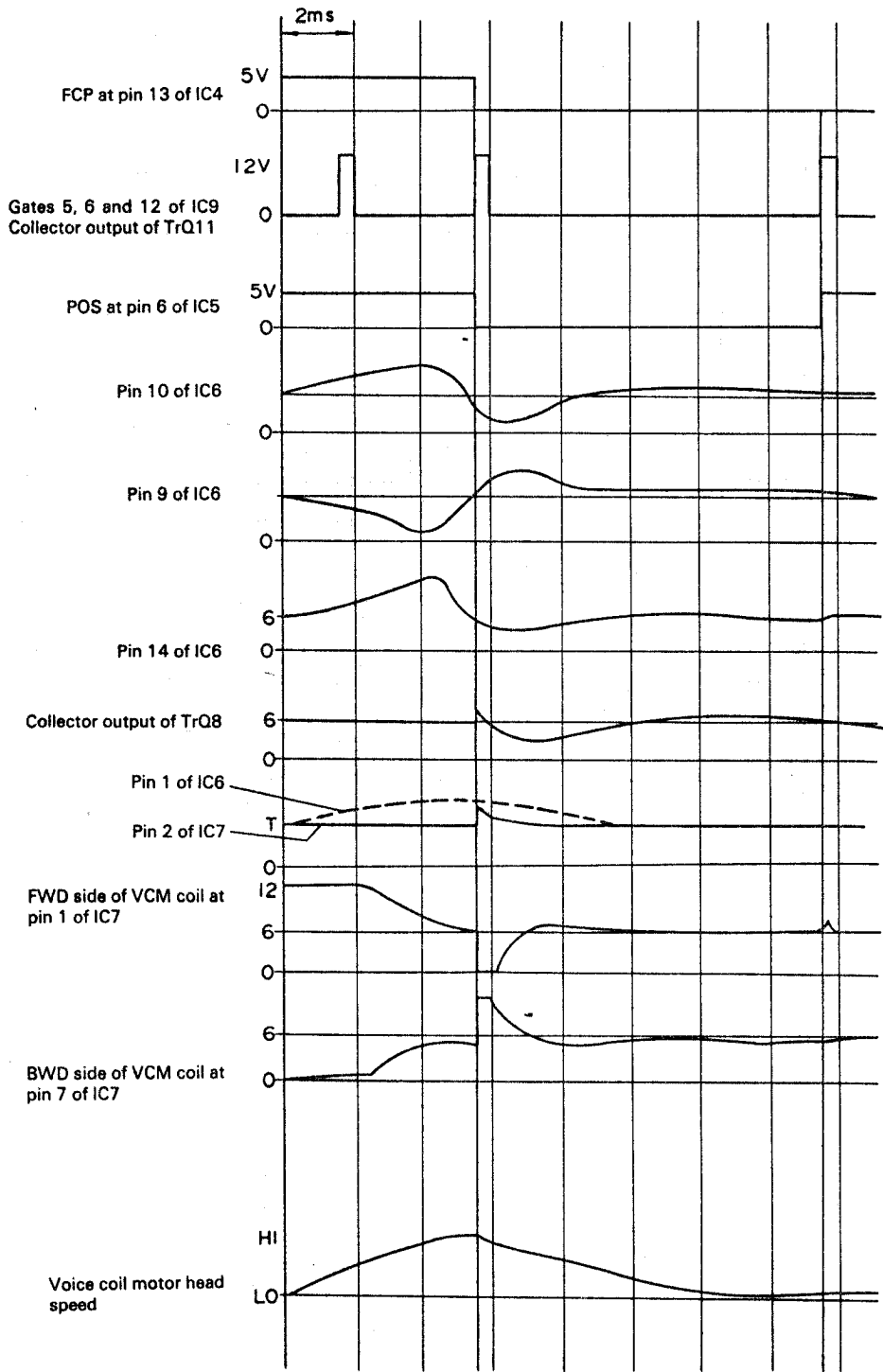






**Seek and R/W operation waveforms at each point of the main board**

**Seek operation waveform**  
 (1-step operation of moving from track 00 to 39)



R/W operation

