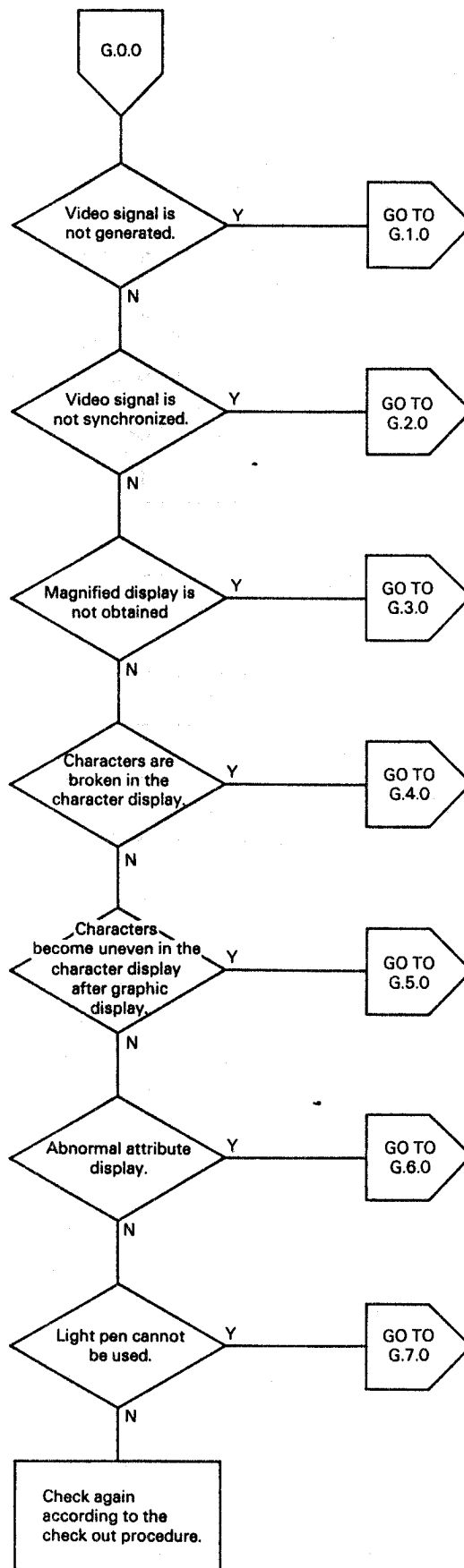
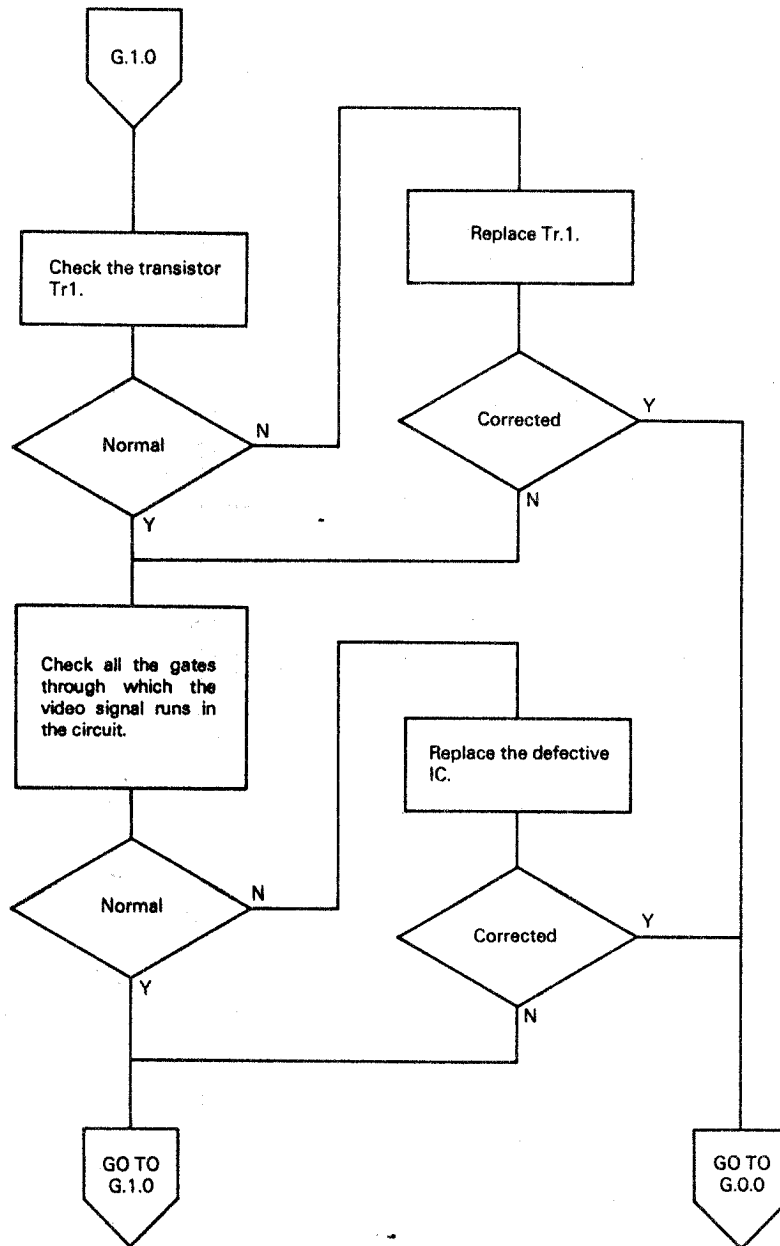


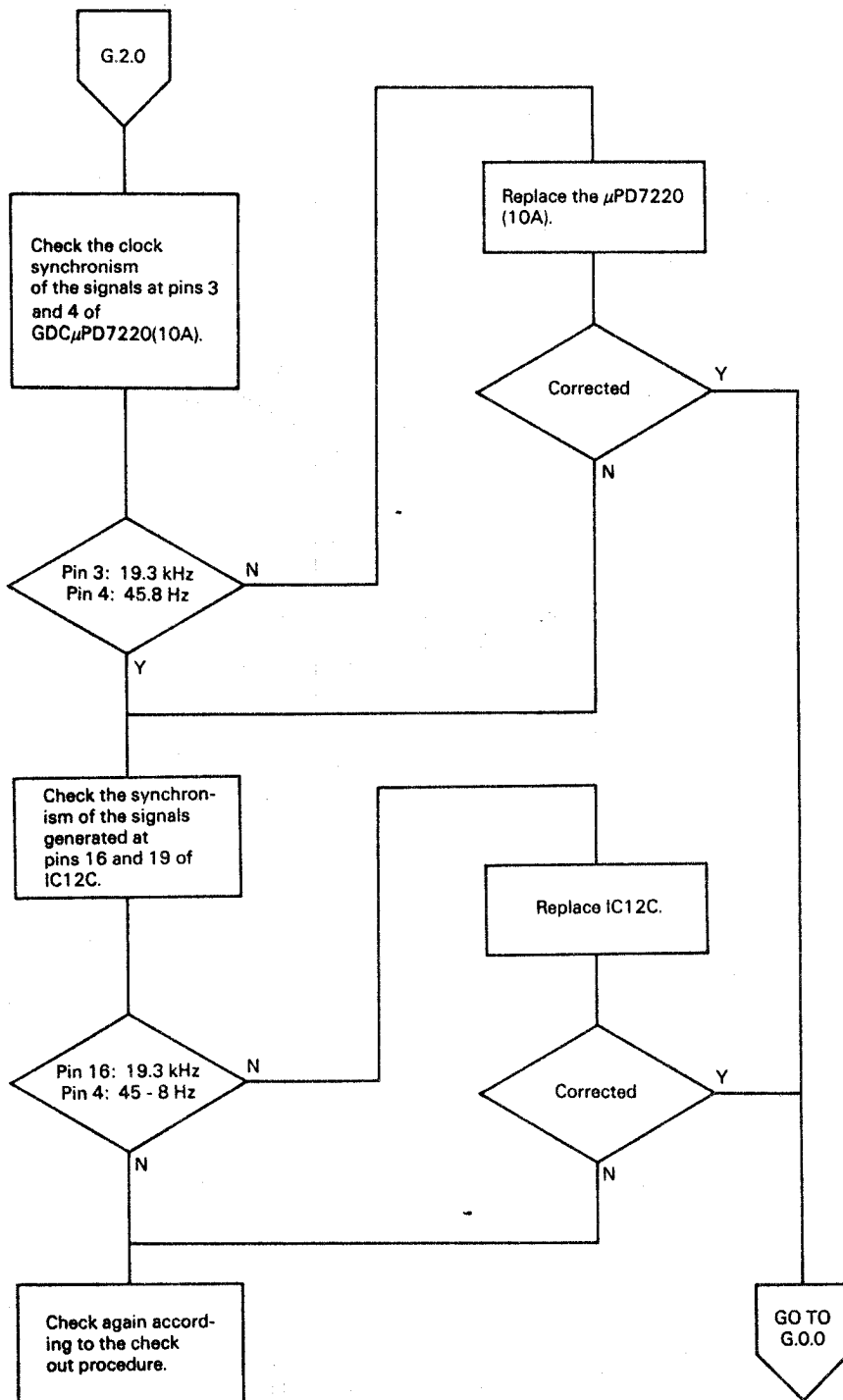
5.3.3 Q10GMS board entry table



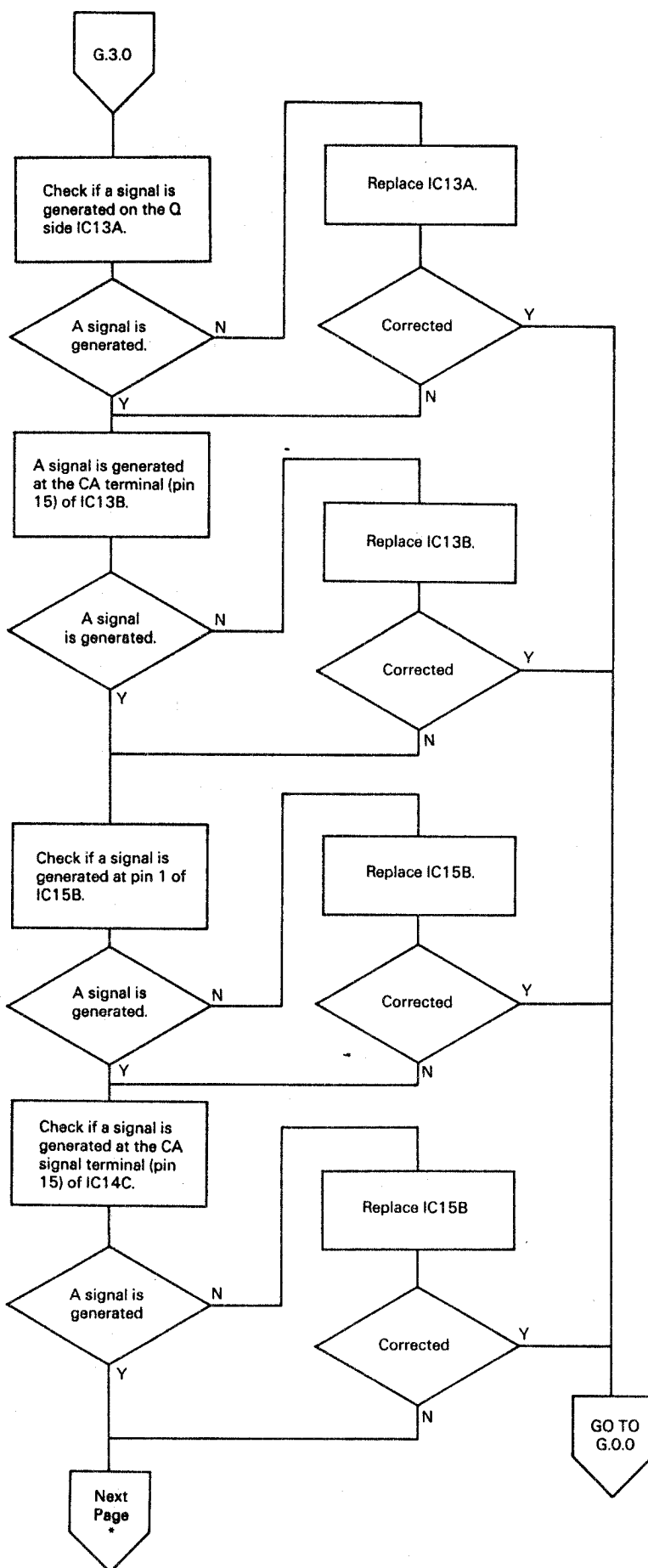
Video signal is generated.

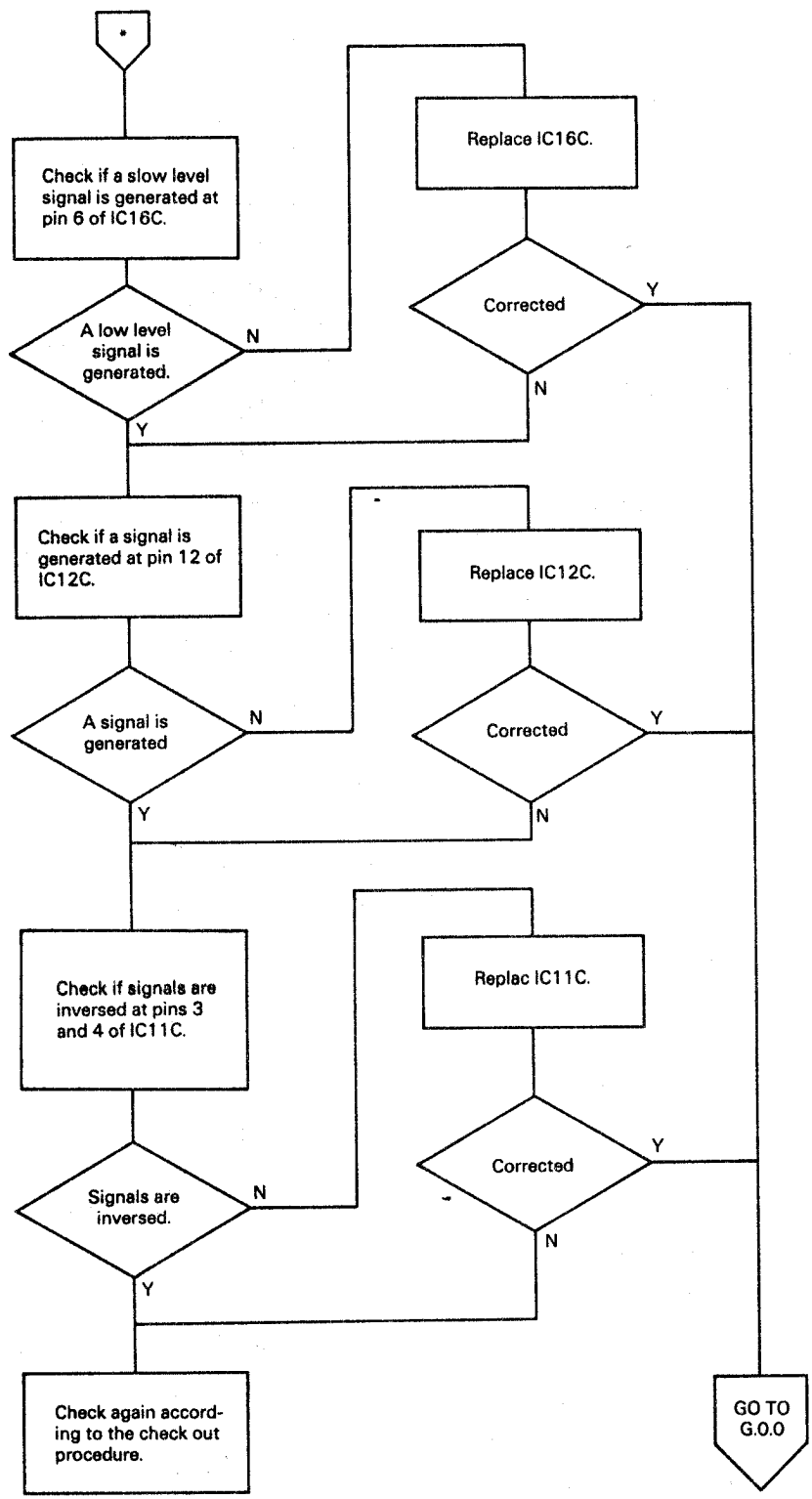


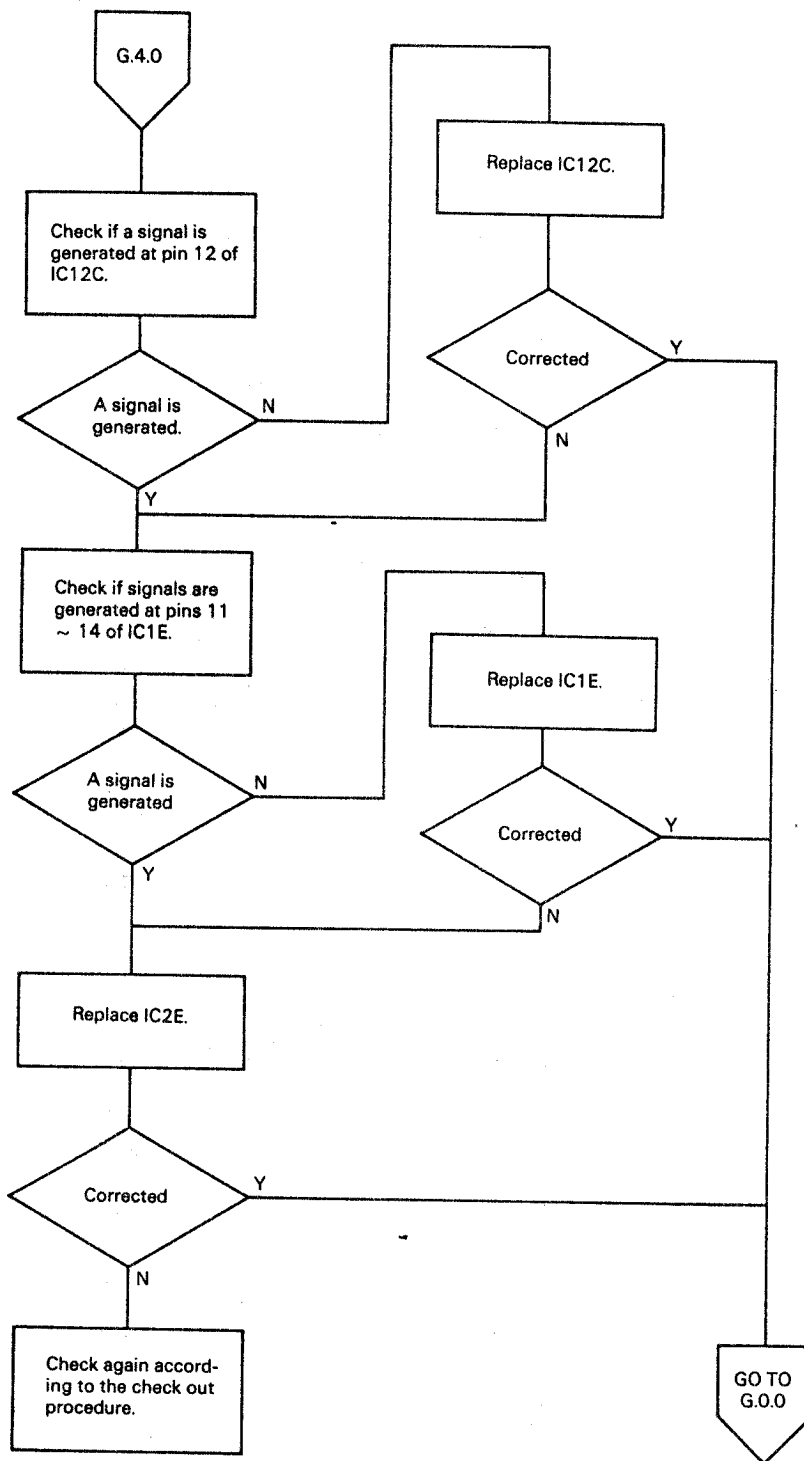
Video signal cannot be synchronized.



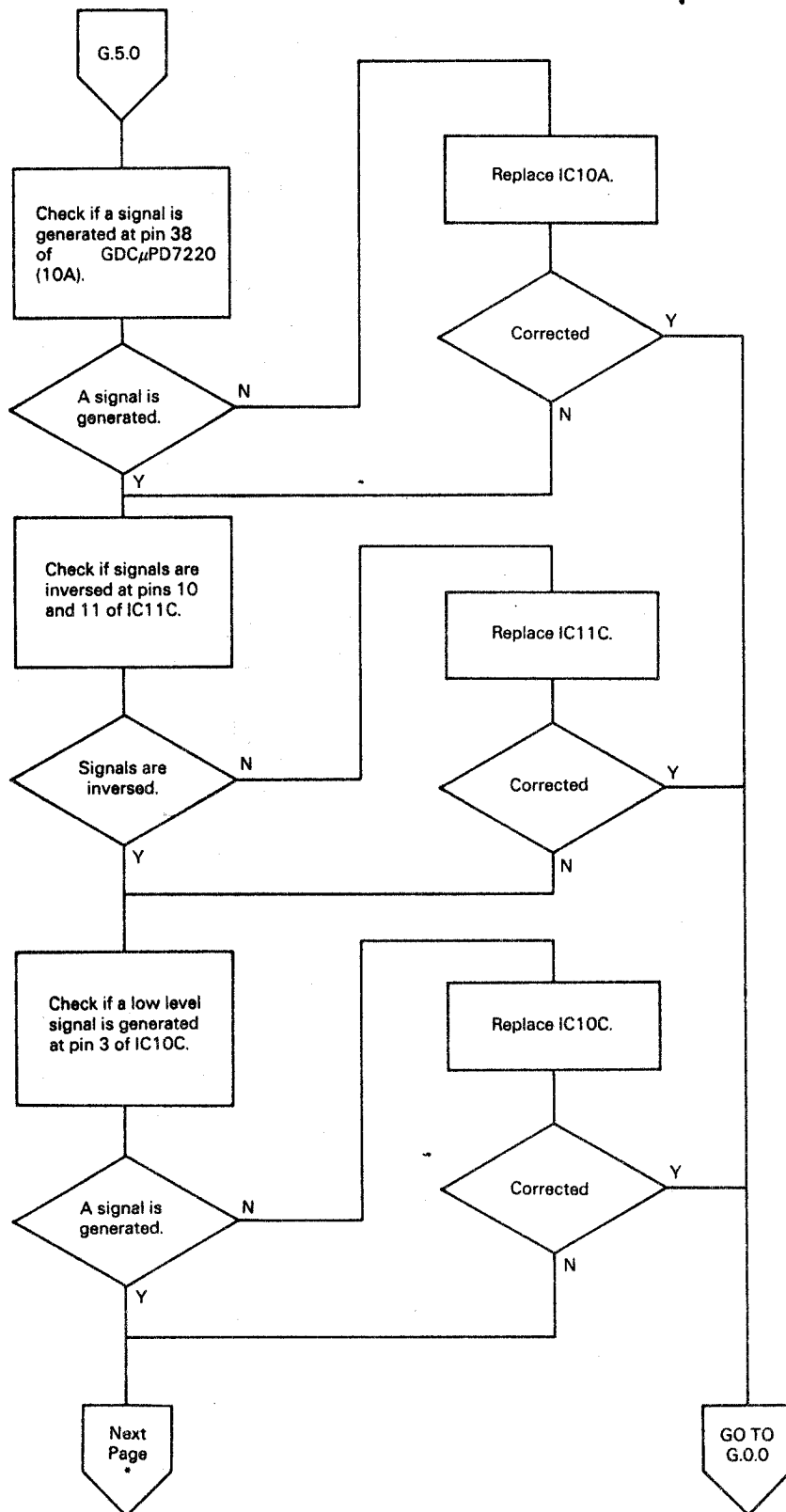
Failure of magnified display

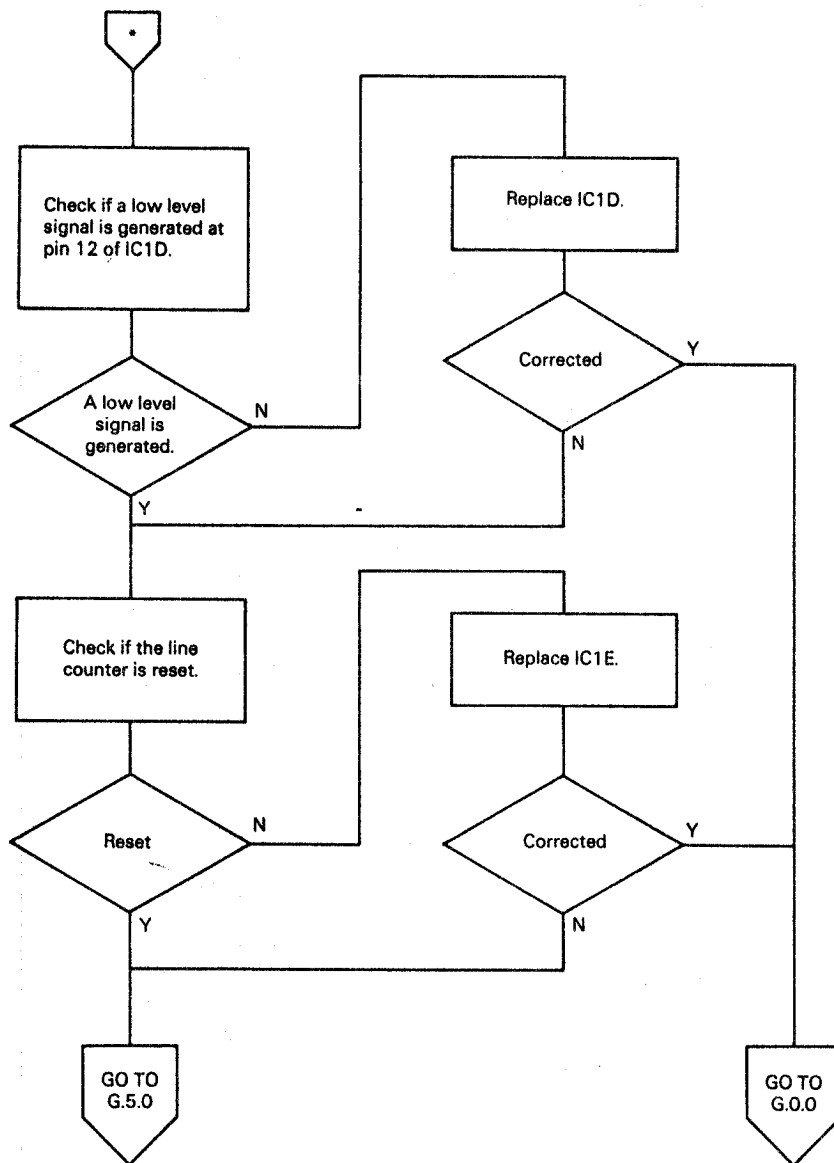




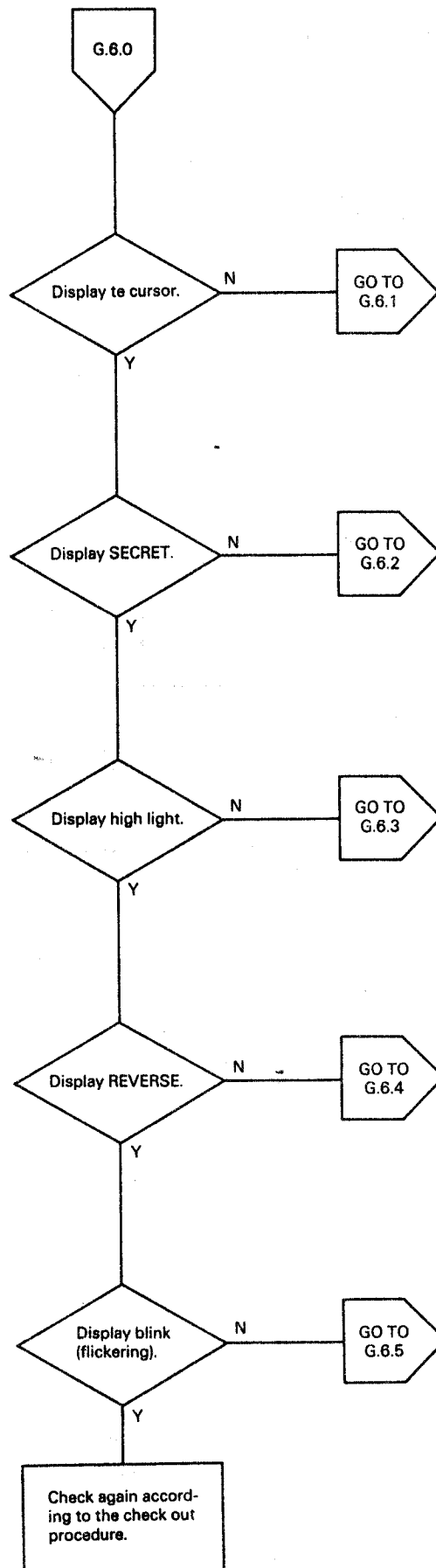


Line counter resetting

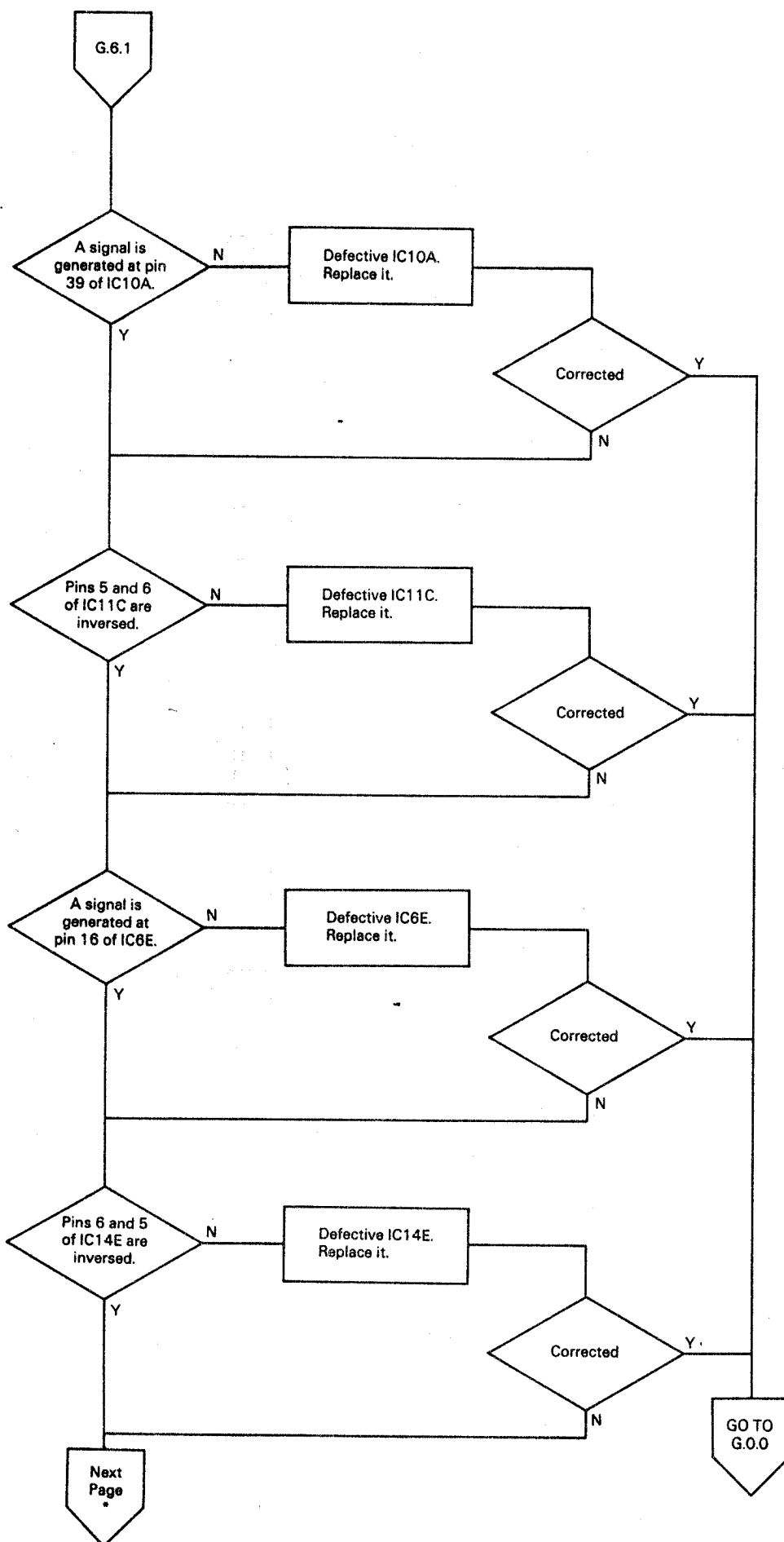


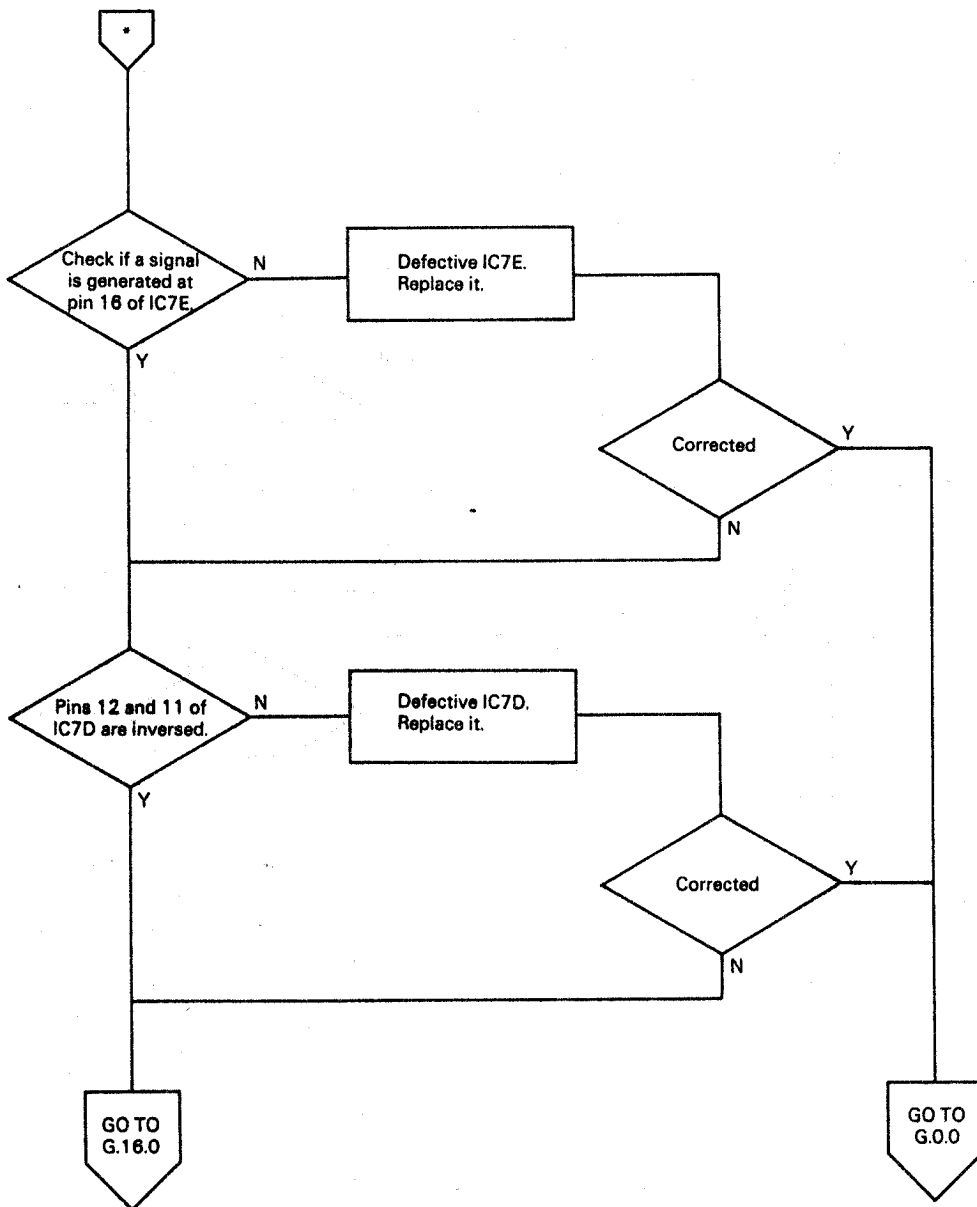


Abnormal attribute

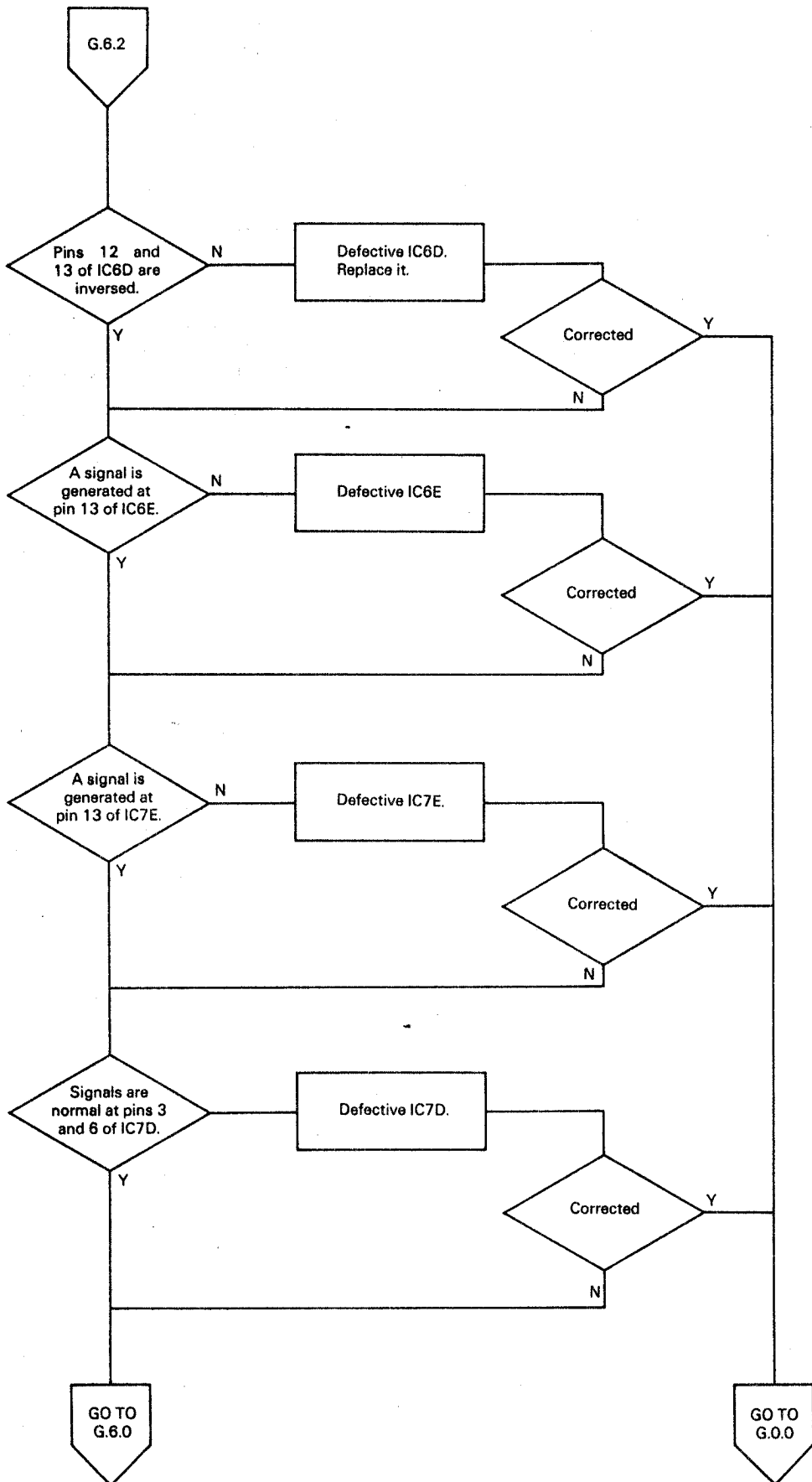


Failure of cursor display

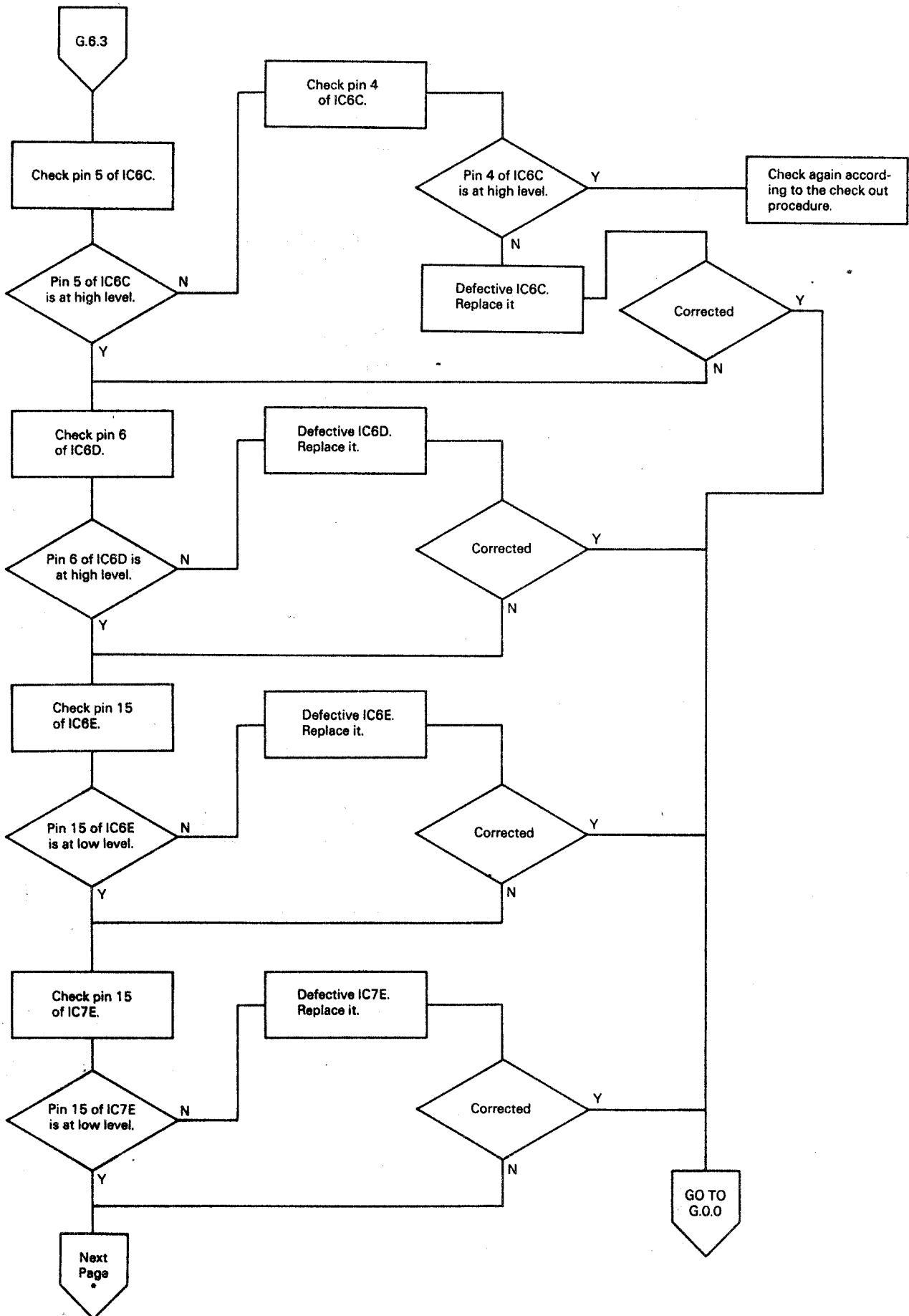


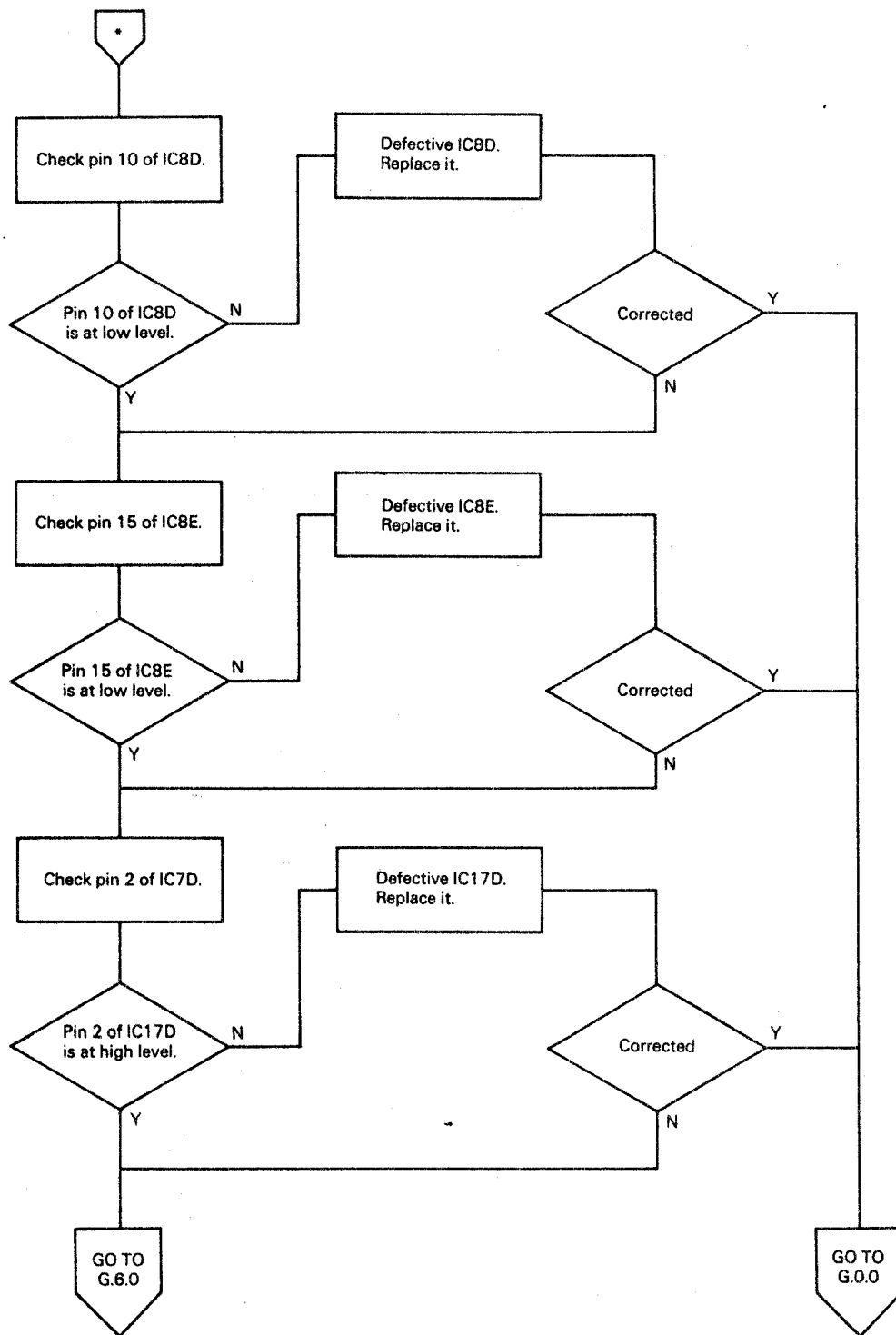


SECRET appears in other than secret mode.

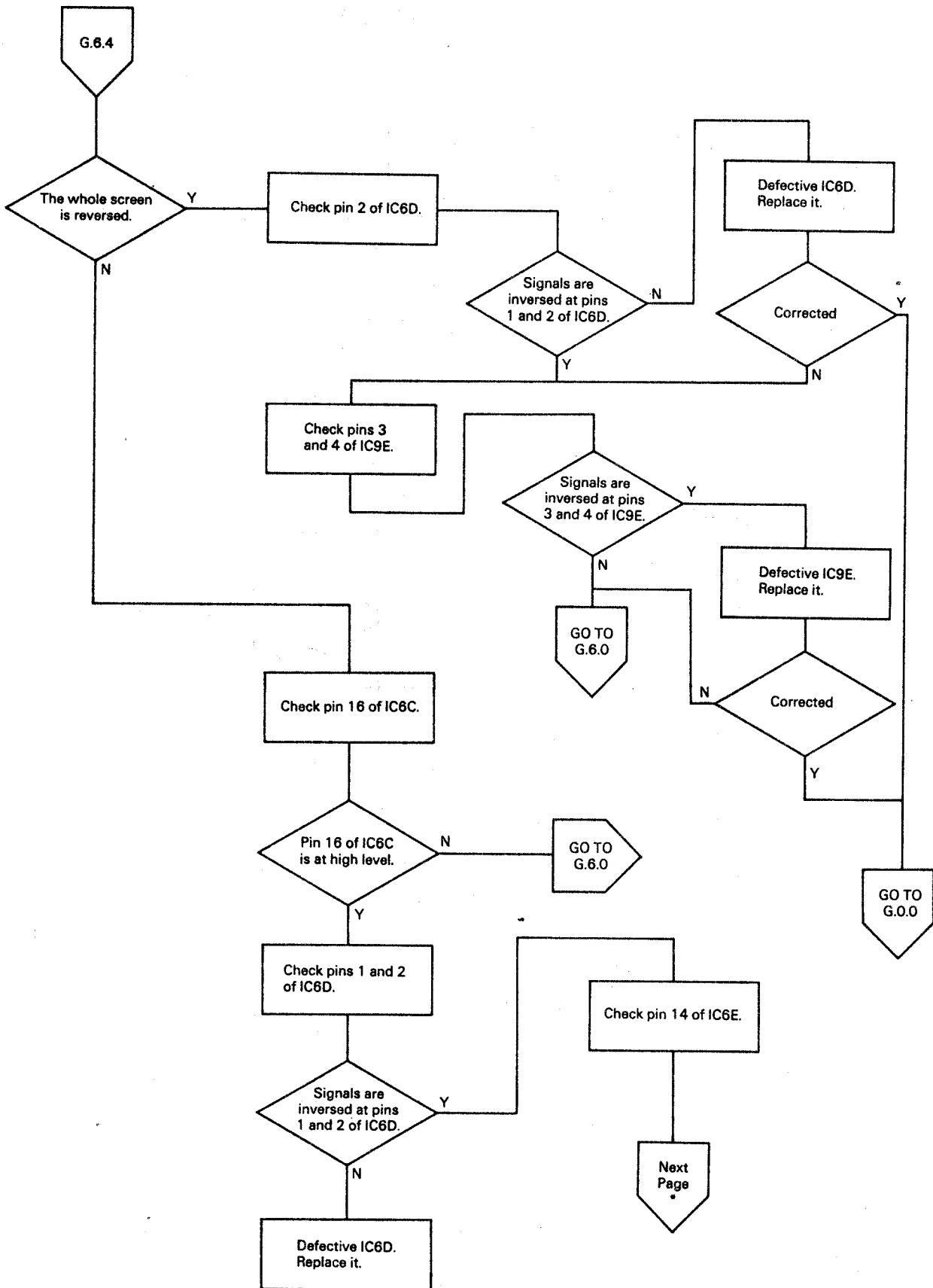


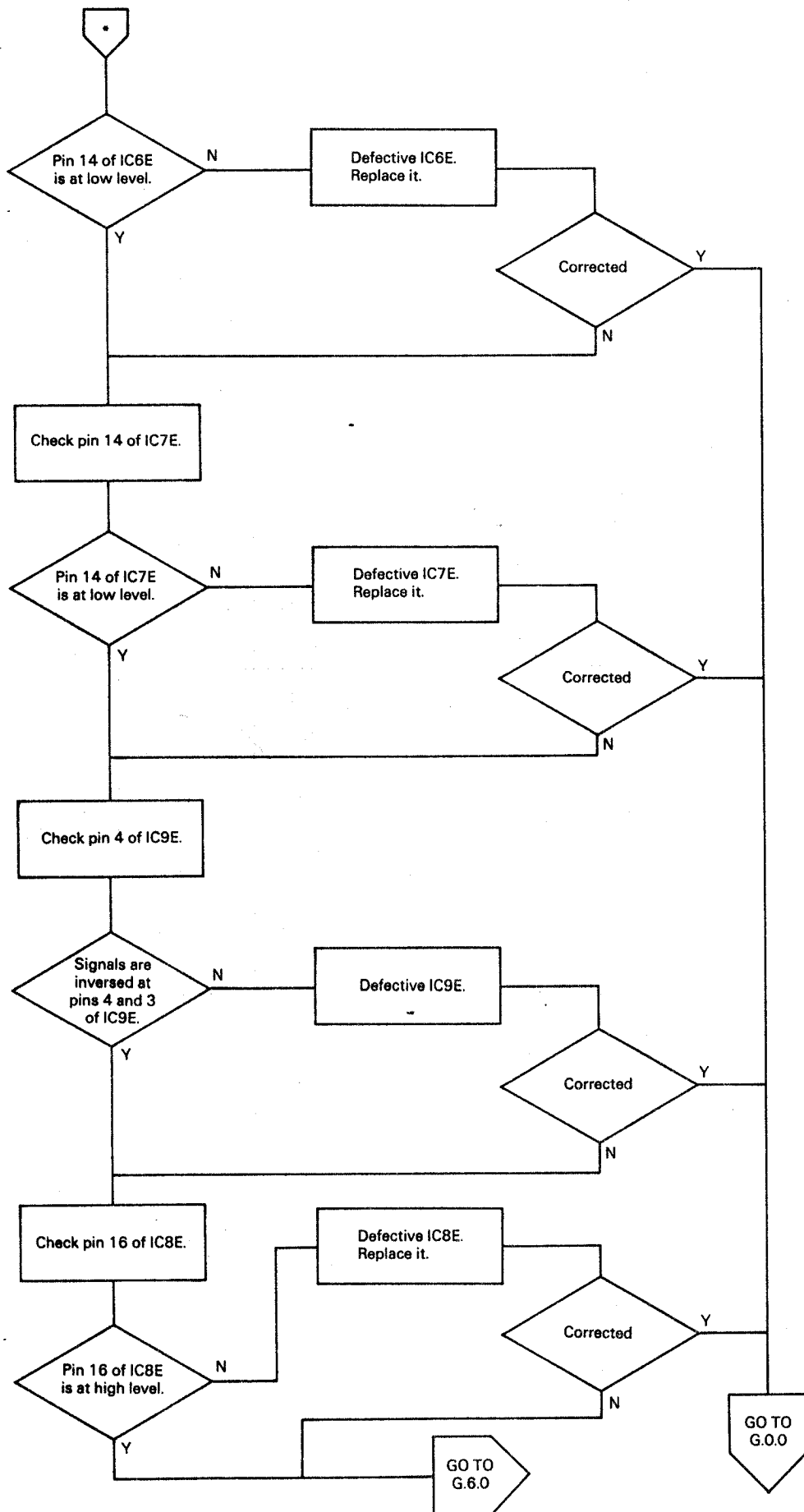
High light



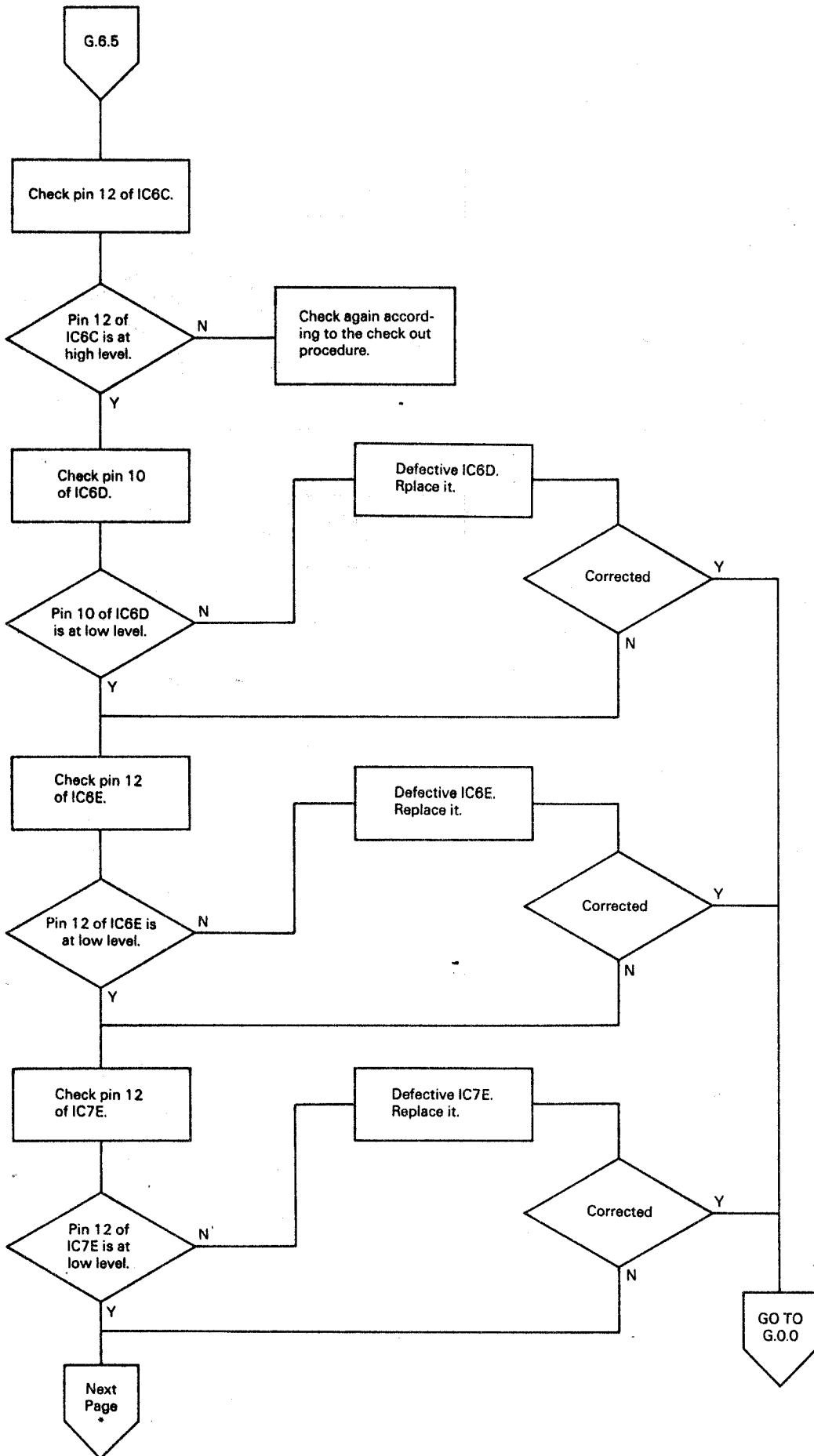


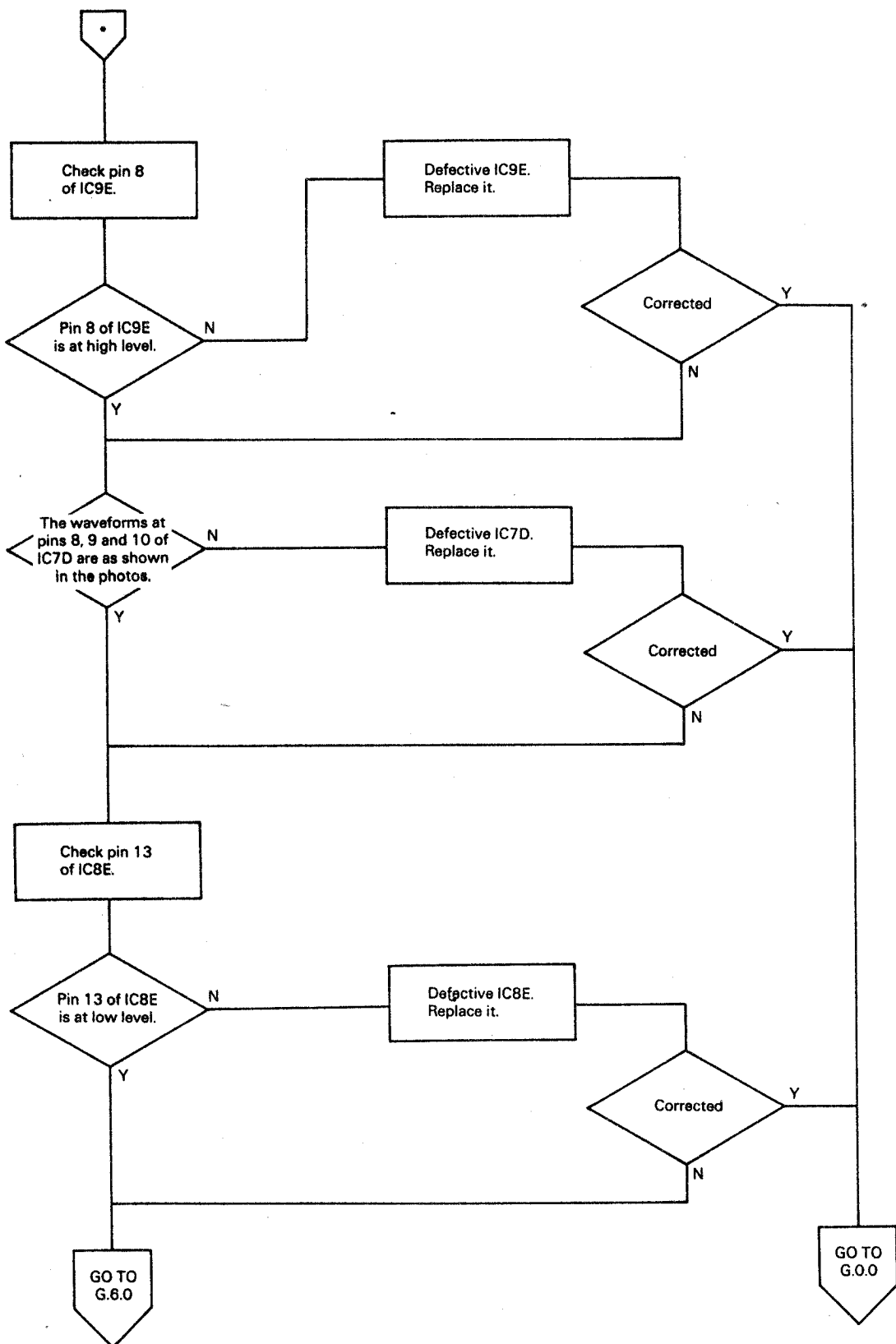
REVERSE



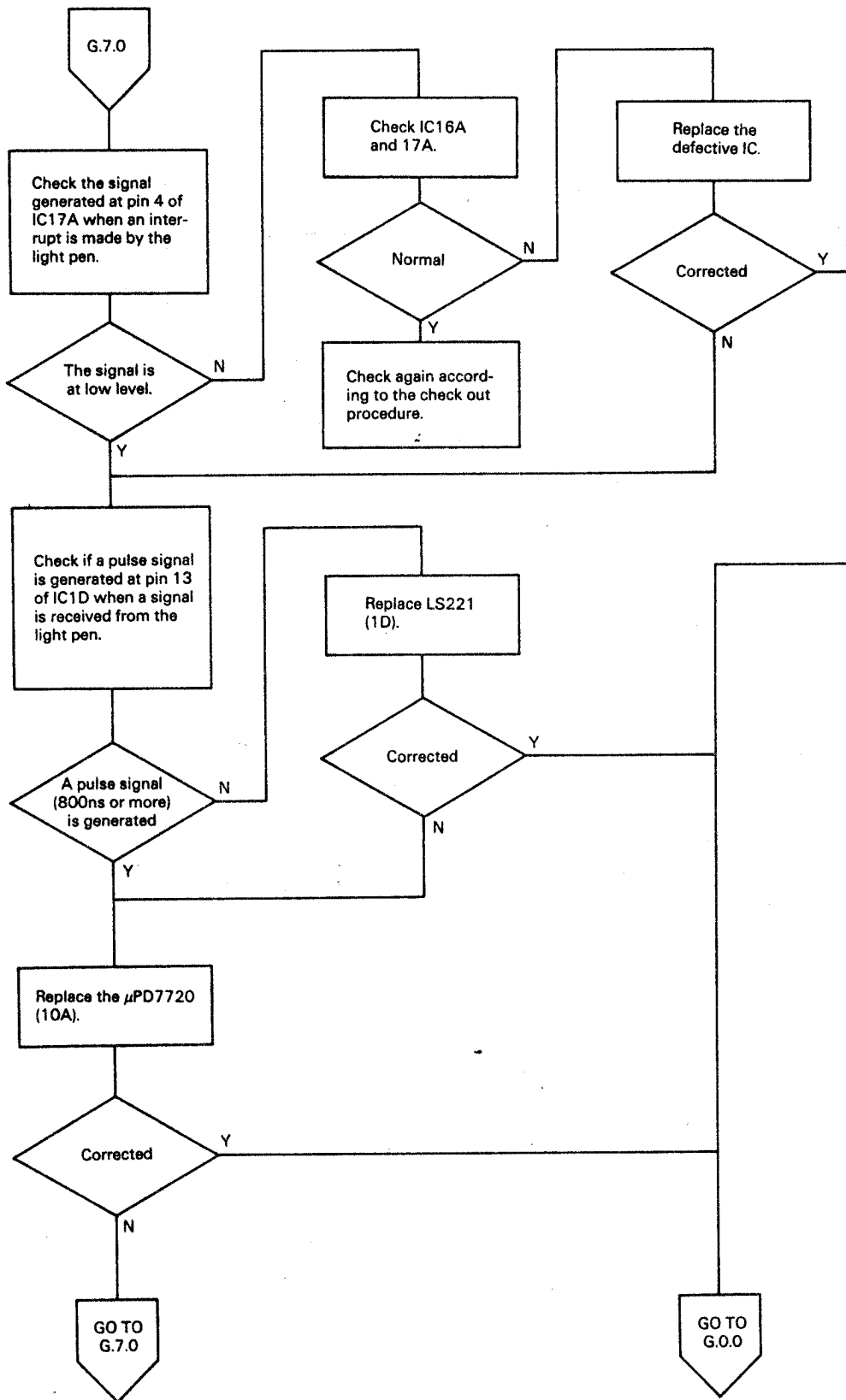


Blink

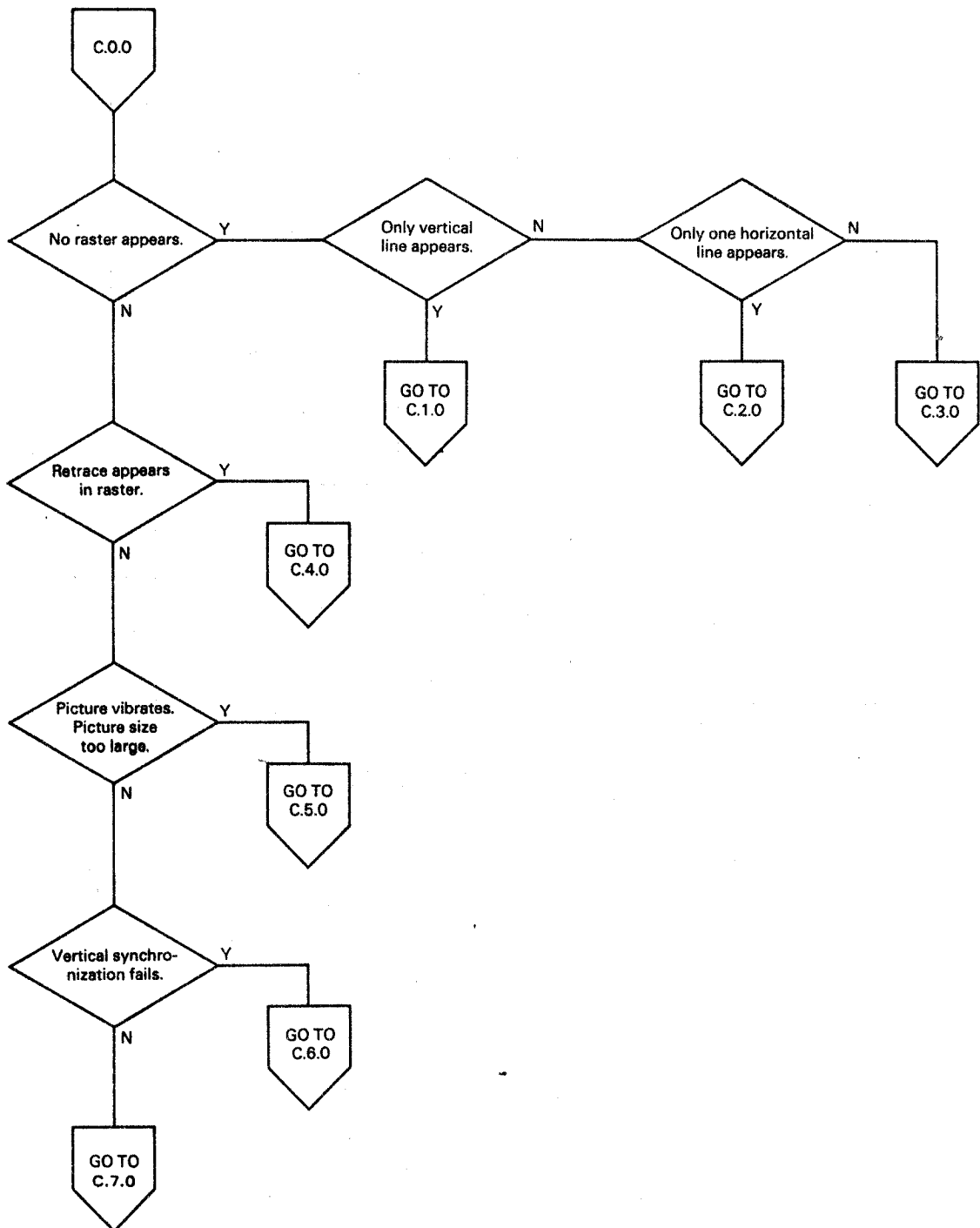




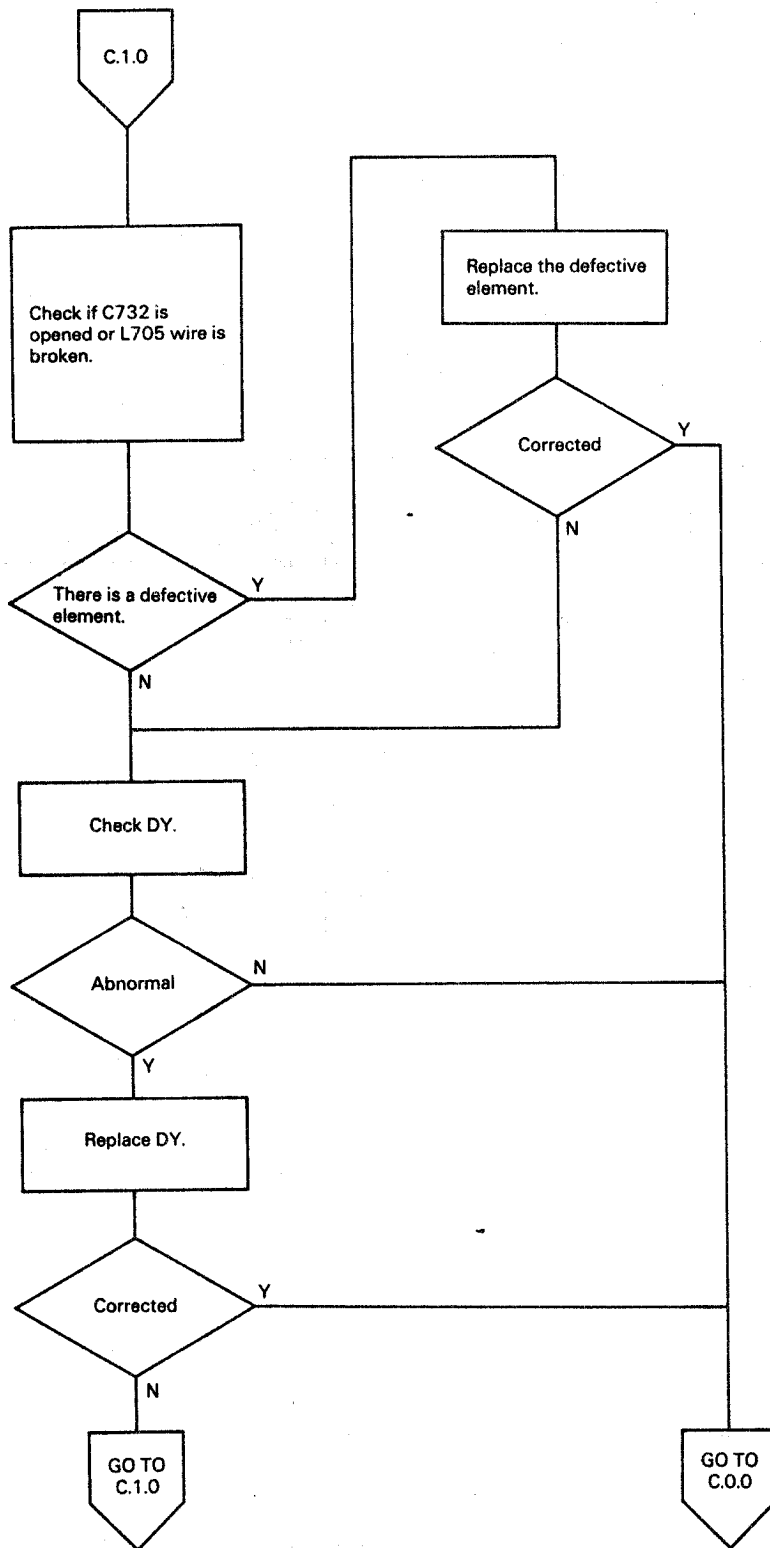
Light pen cannot be used.



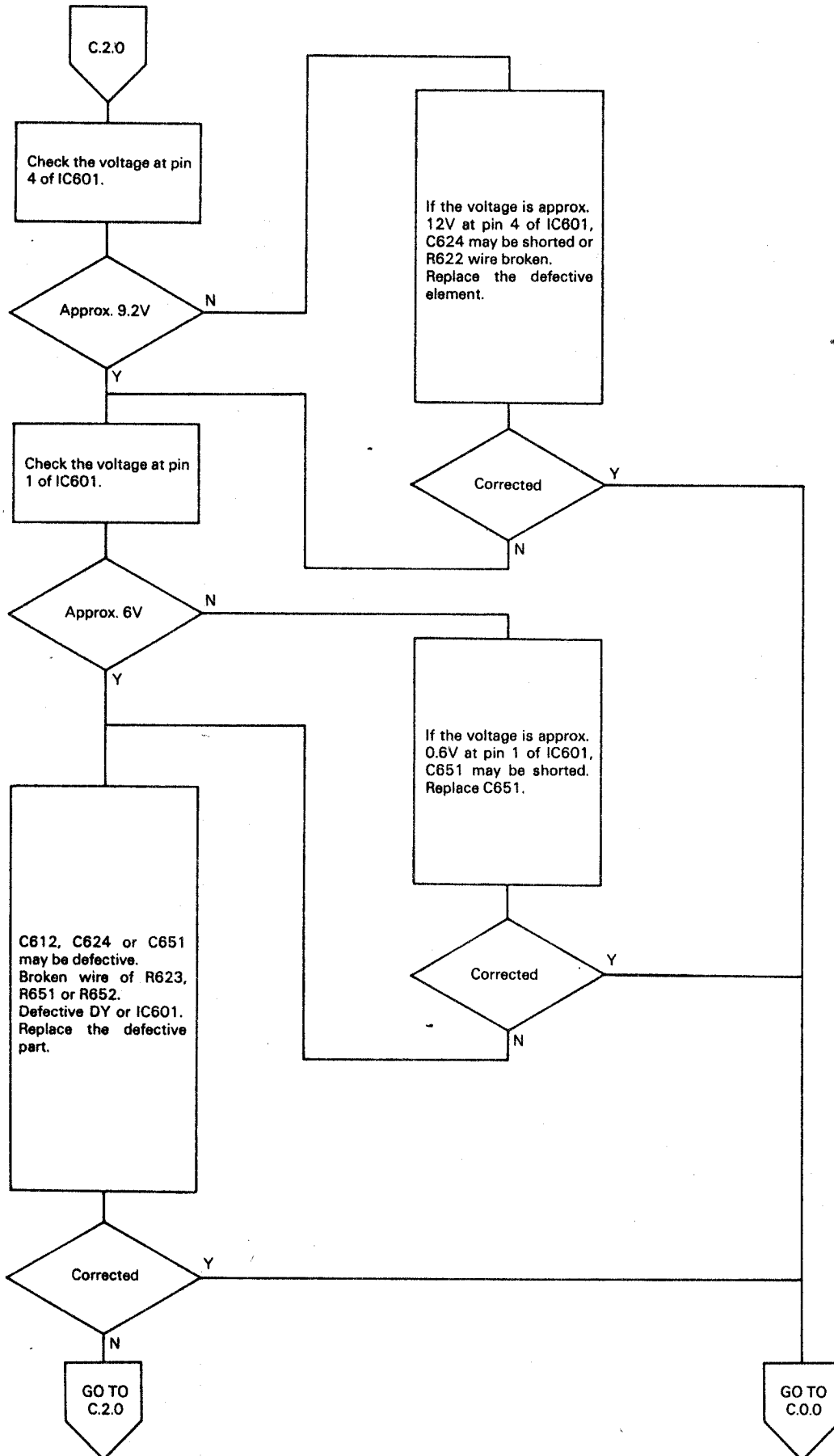
5.3.4 CRT drive unit entry table



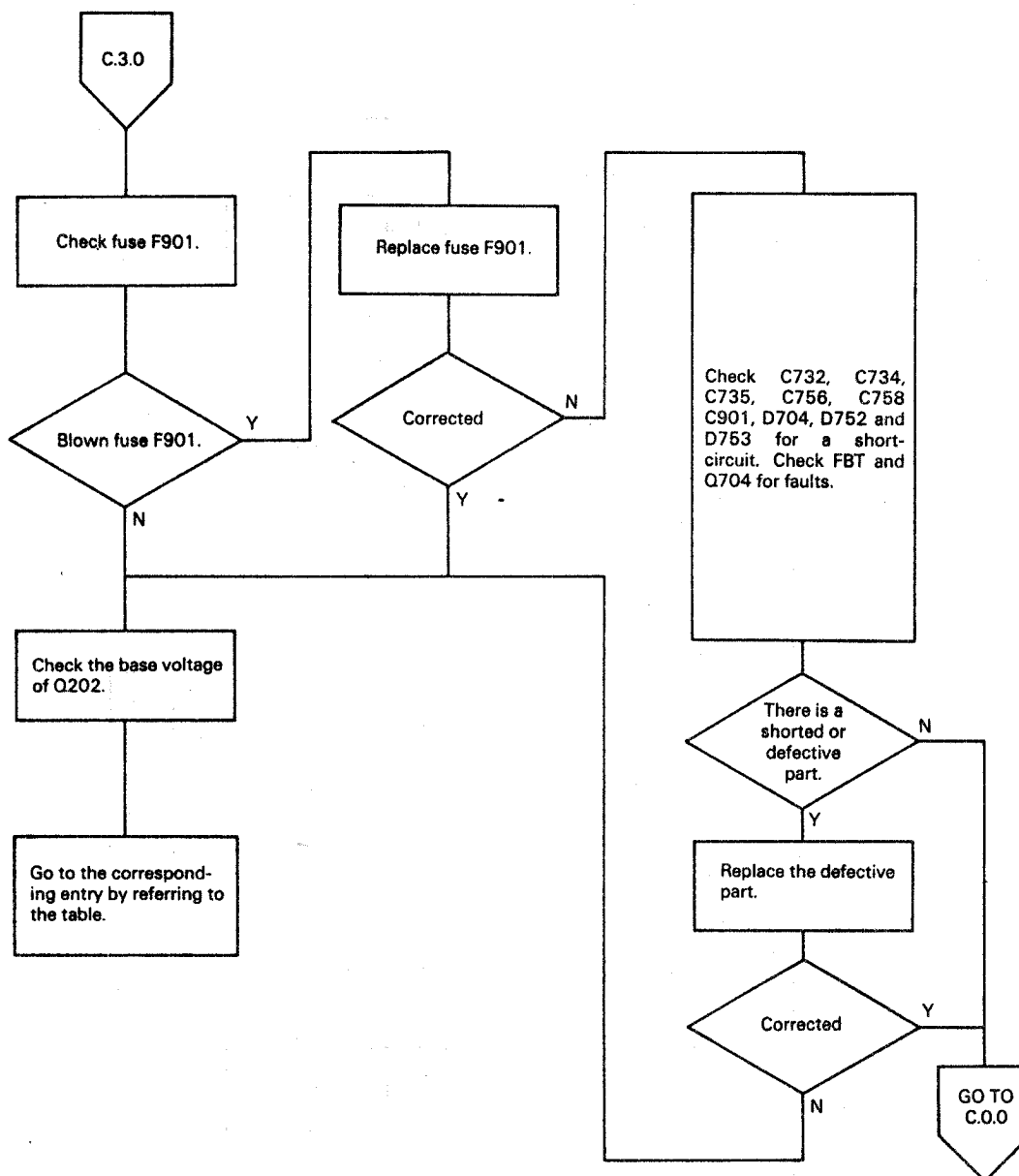
Only one vertical line



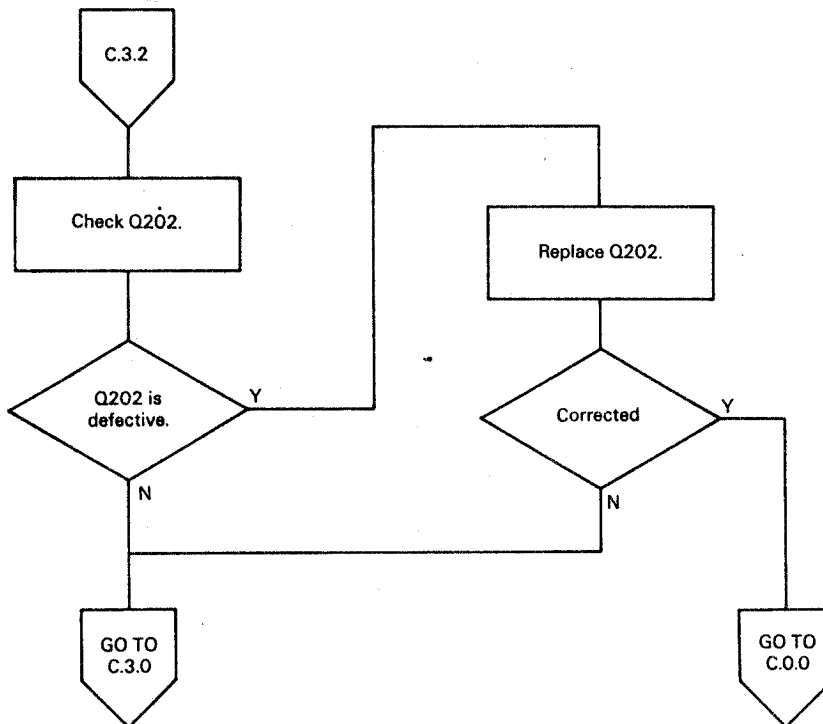
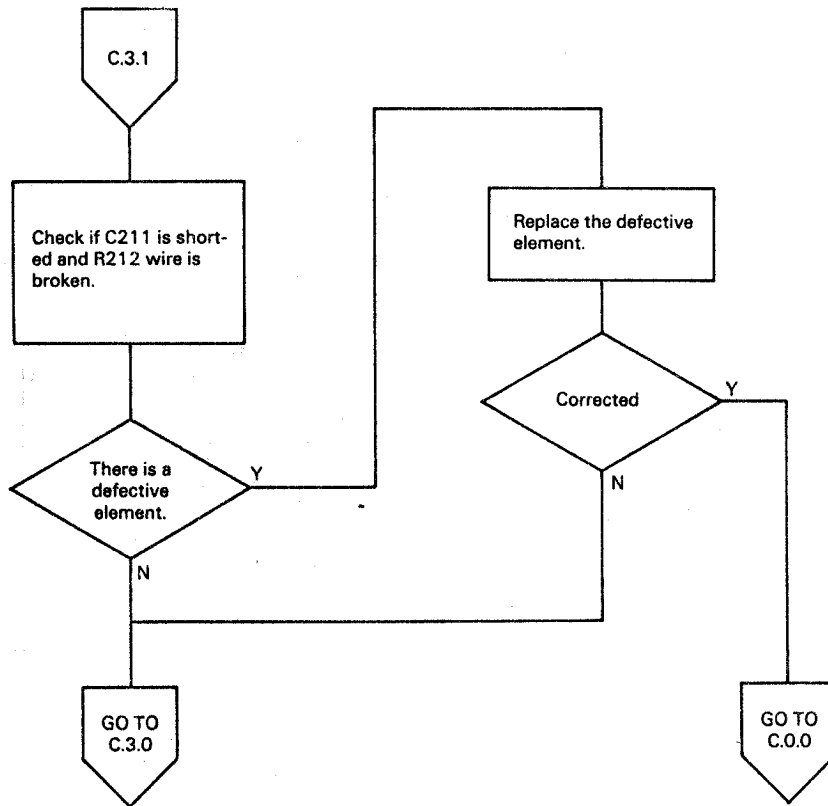
Only one horizontal line

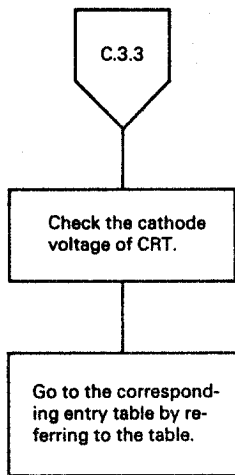


No raster appears.

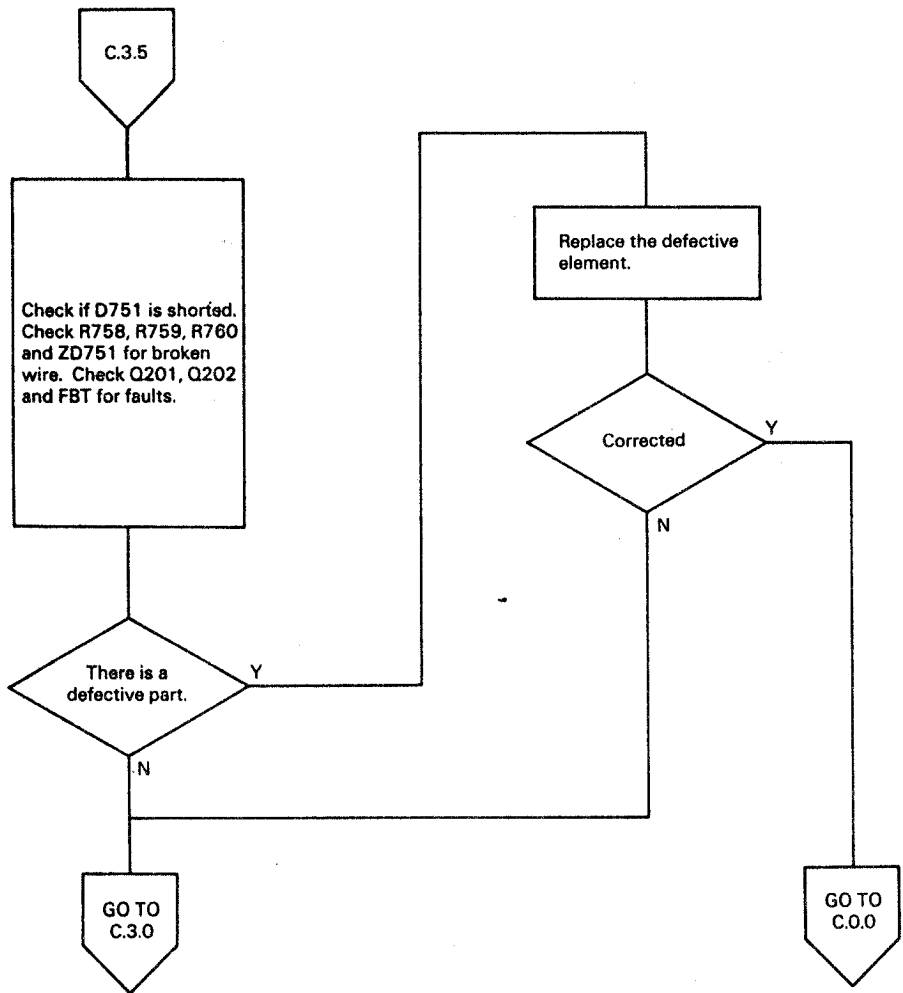


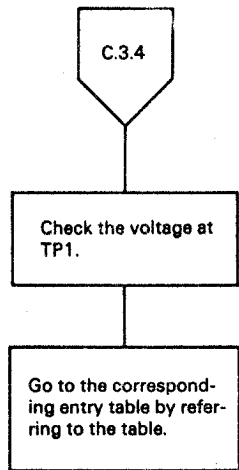
Base voltage of Q202	Entry table
0 V	C.3.1
0.9 ~ 1.5V	C.3.2
7.5 V	C.3.3
Other than the above	C.0.0



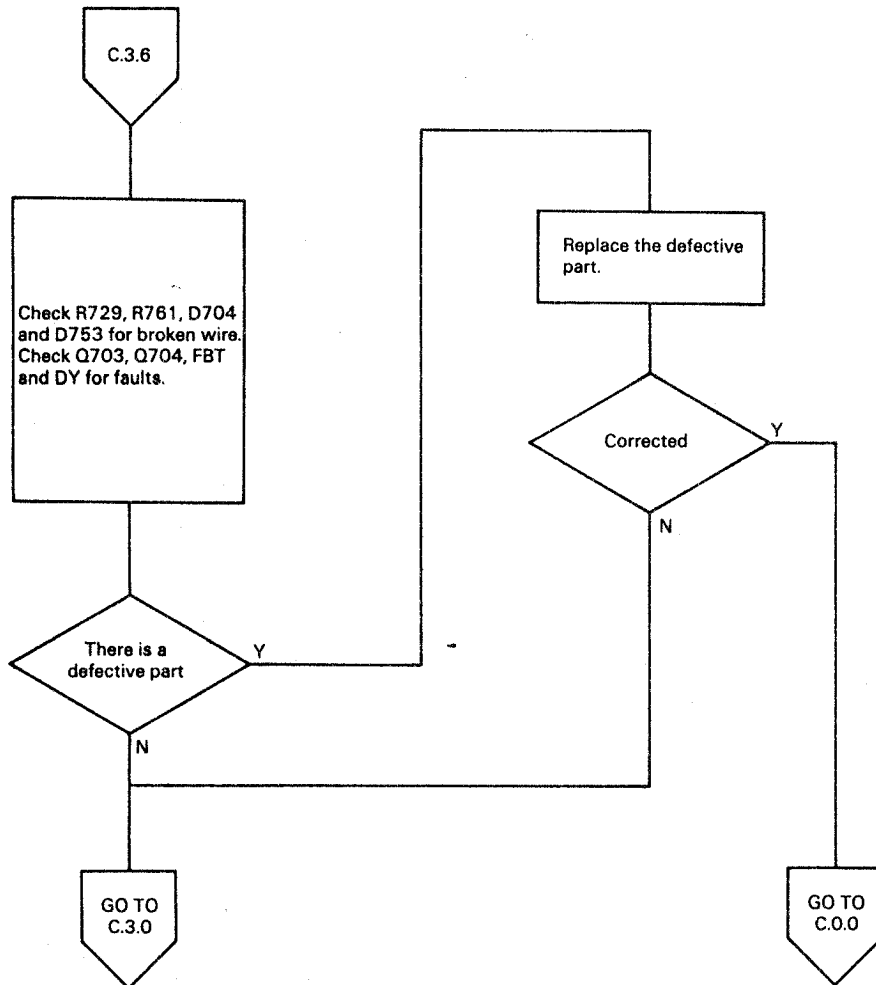


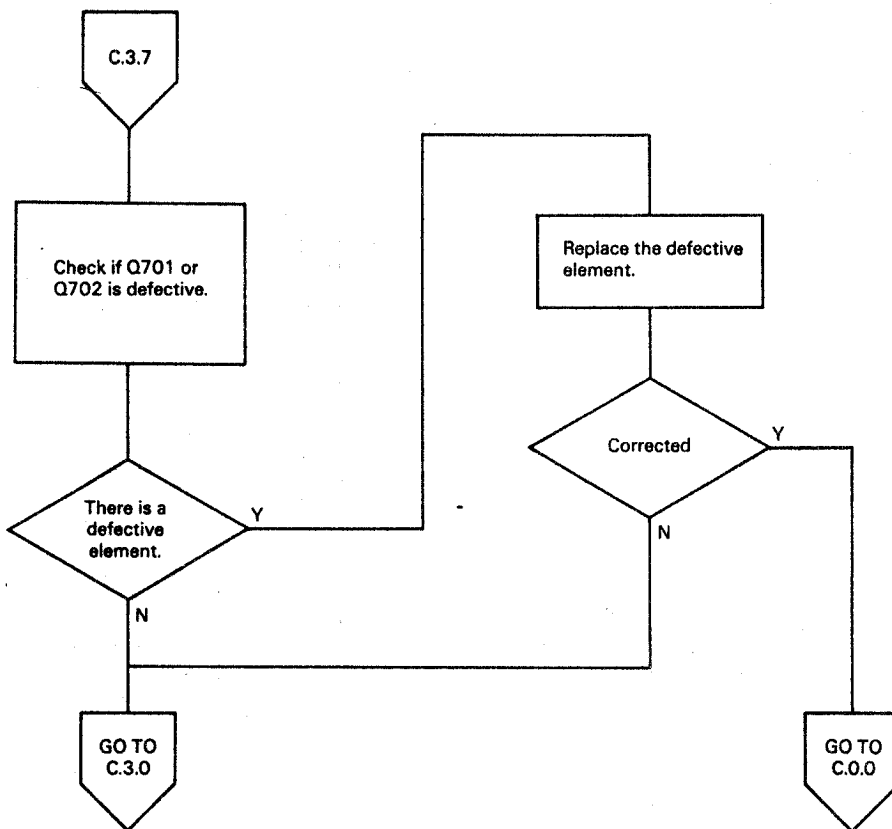
CRT cathode voltage	Entry table
0 ~ 10V	C.3.4
20 ~ 55V	C.3.5
Other than the above	C.0.0



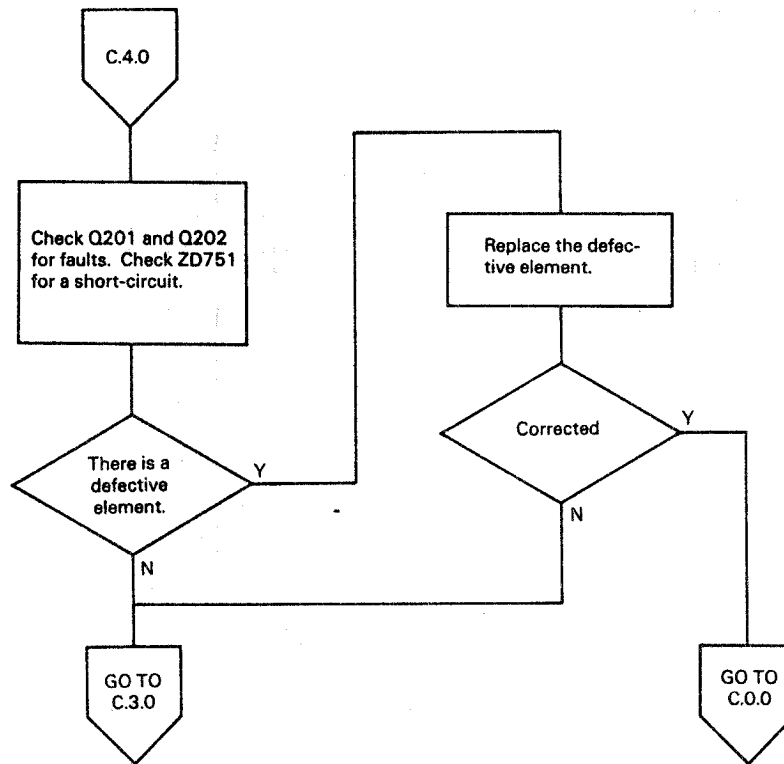


TP1 voltage	Entry table
4 V	C.3.6
6 V	C.3.7
Other than the above	C.0.0

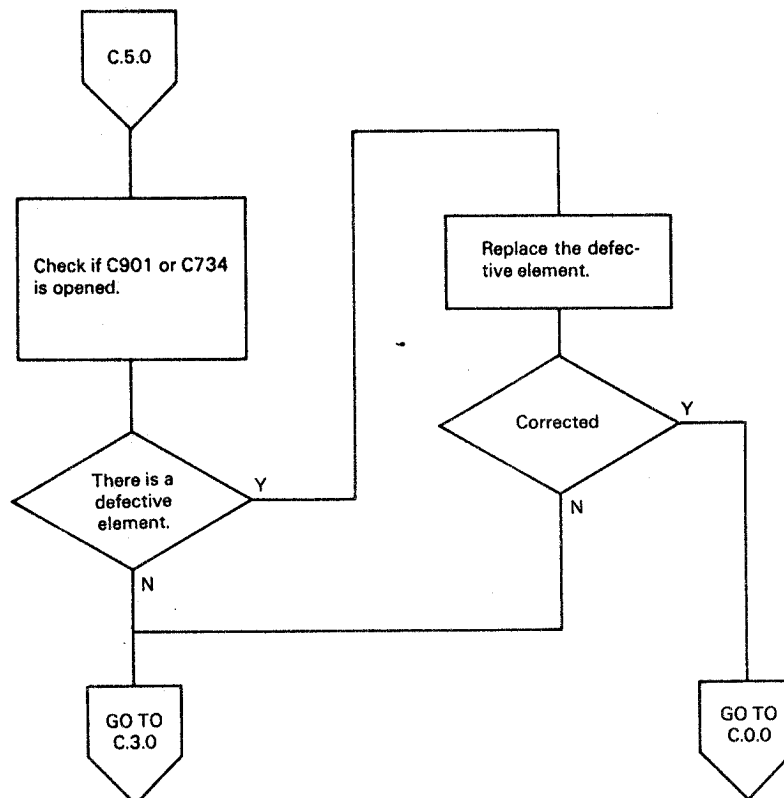




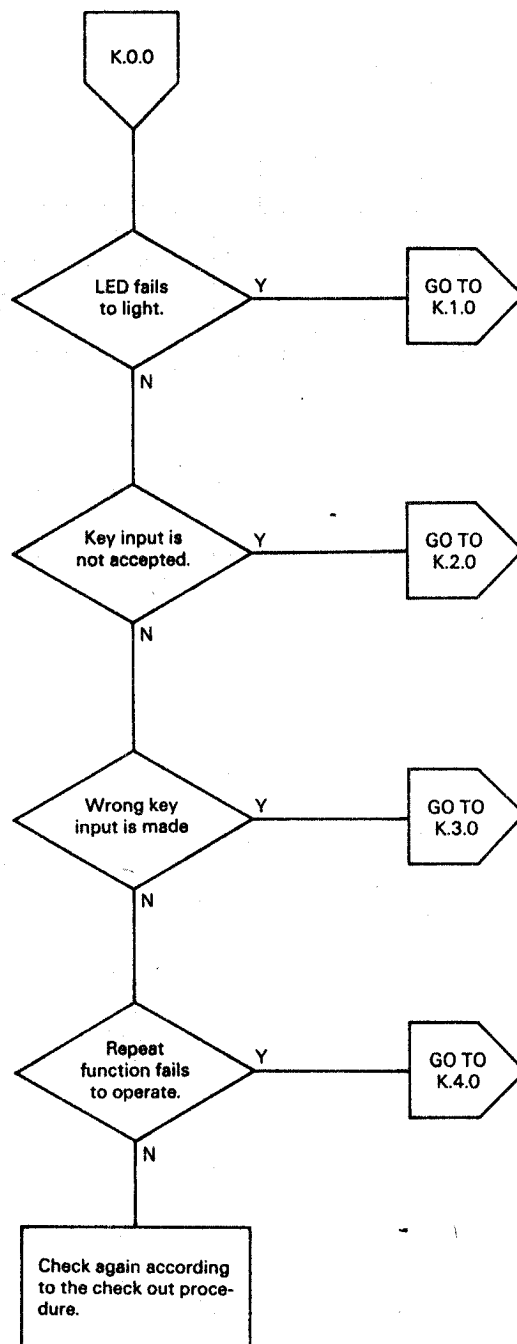
Retrace appears in raster.



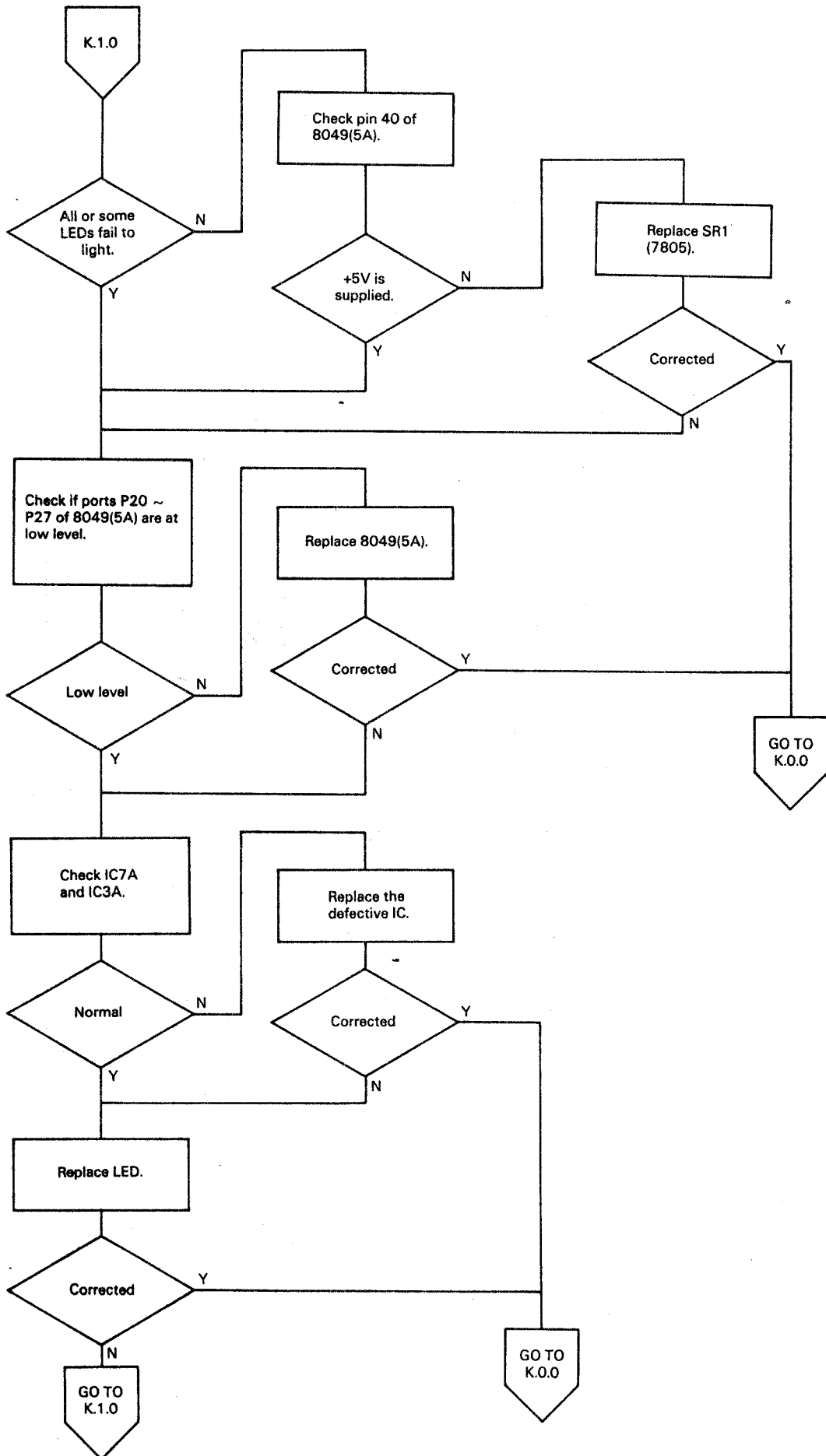
Picture vibrates, or picture size is too large.



5.3.5 Keyboard unit entry table



LED fails to light.



Key input is not accepted.

