



# PM 5190

## LF synthesizer

9499 450 08311

841 201

### 1. PROGRAMMABLE PARAMETERS

- frequency
- ac voltage
- dc voltage
- wave form

### 2. INTERFACE FUNCTIONS

- AH 1: acceptor handshake  
complete capability
- L 2: basic listener
- RL 2: remote-local  
capability,  
no local lock-out

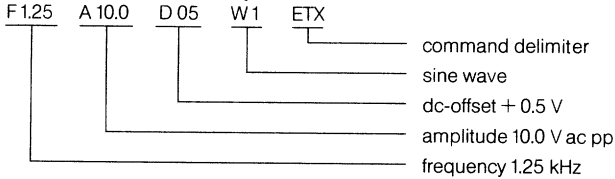


# PHILIPS

### 3. COMMAND LIST

Header (ASCII)	Body (ASCII)	Function, Comments
F	numerical value	parameter: frequency dimension: kHz range: .000001 ... 2146 kHz example: F 12,5 $\triangleq$ frequency 12.5 kHz
A	numerical value	parameter: amplitude dimension: V pp range: .000 ... 19.9 format: .XXX ... XX.X decimal point and each digit X incl. leading/trailing zeroes must be set
D	numerical value	parameter: dc-offset dimension: V dc range: 0.00 ... $\pm$ 9.9 format: XX + sign must be left out - sign must be set decimal point position is determined by ac-setting dc-value cannot be set without ac-value restriction: ac + dc < 200, decimal point ignored example: A 1.50 D-05 $\triangleq$ amplitude: 1.50 V pp dc-offset : - 0.05 V
W	coding digit	parameter: wave form 1 $\triangleq$ sine wave 2 $\triangleq$ square wave 3 $\triangleq$ triangular wave, frequency 1 mHz ... < 100 kHz 4 $\triangleq$ sine wave/AM ext. 5 $\triangleq$ triangular wave/AM ext.

**Complete command example:**



## 4. COMMAND DELIMITERS

To terminate a single command or a command string, the following character must be used:

ASCII	Hex
ETX	03

## 5. TIMING

Response time  
(between ETX transfer and command execution)

7 ms for frequency  
10 ms for ac voltage  
12 ms for dc voltage  
4 ms for wave form

## 6. SETTING DEVICE ADDRESS

**5 switches** on the conductor side of the digital printed circuit board, unit 2, are accessible through the slots of the rear bottom cover of the instrument (see fig.). It is not necessary to remove the cabinet.

On delivery the address is set to 4.

