

# System 35 Desktop Computer

Read Me First



**HEWLETT-PACKARD**



## Read Me First

Before you start using your System 35 consult this manual to find a suggested order of reading to best suit your programming background. A list of System 35 documentation is also provided.



Hewlett-Packard Desktop Computer Division  
3404 East Harmony Road, Fort Collins, Colorado 80525



The purpose of **Read Me First** is to explain the System 35 documentation.

Your first question might be: "Where do I start?" Check below for the description that is nearest to your programming background, and turn to the page shown. You will find a suggested manual progression diagram that shows which manuals are best suited to your needs. An explanation of Manual Changes is provided for you on page 6.

#### COMPUTER SET UP AND TURN ON

You want to know how, see the Owner's Manual.

#### BEGINNERS

For those with no programming background, see page 2 of this booklet.

#### ADVANCED PROGRAMMERS

For those with other systems or programming languages, see page 3 of this booklet.

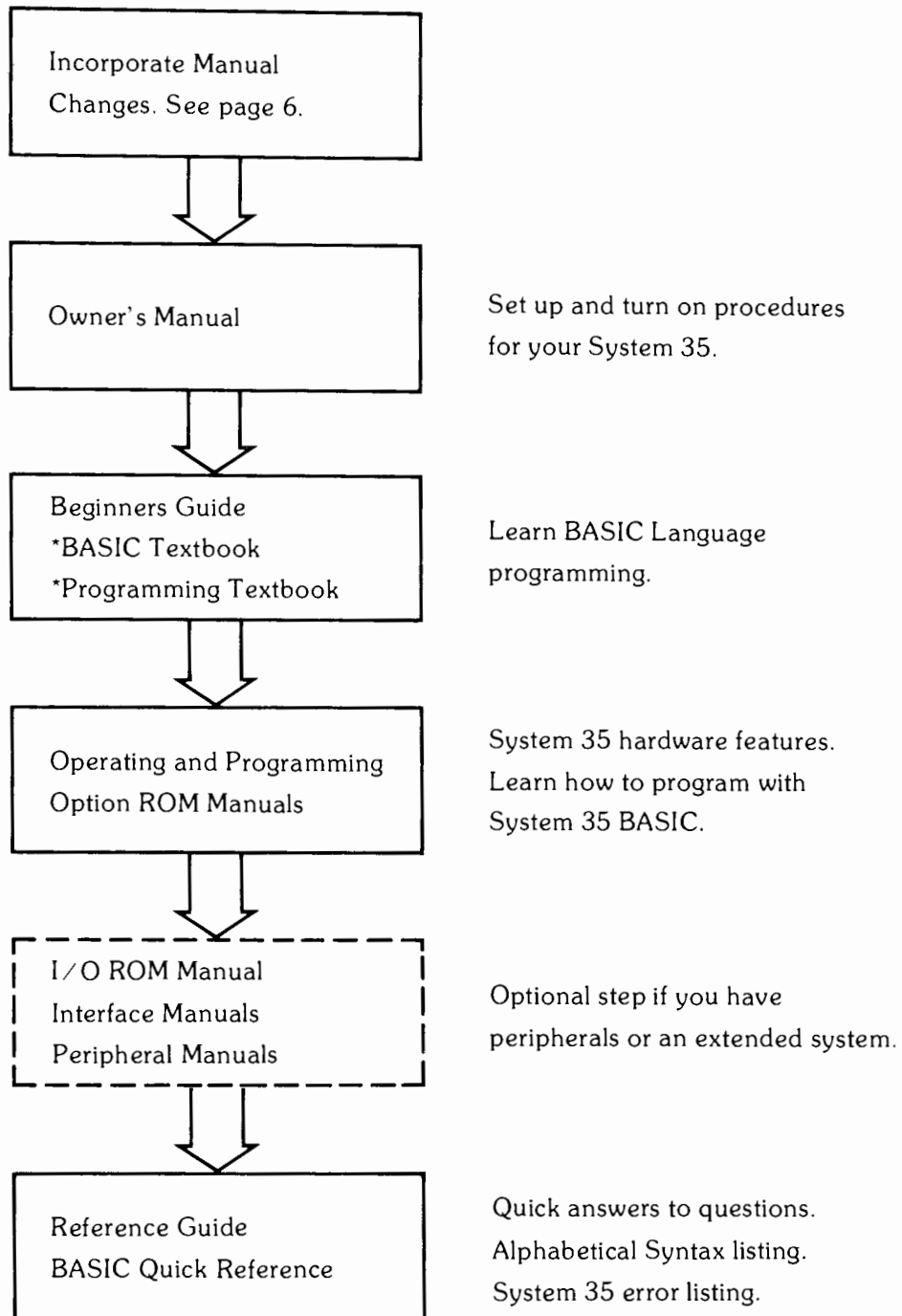
#### EXPERIENCED DESKTOP USERS

For those with previous experience with HP Desktop Computers, see page 4 of this booklet.

#### ASSEMBLY LANGUAGE PROGRAMMERS

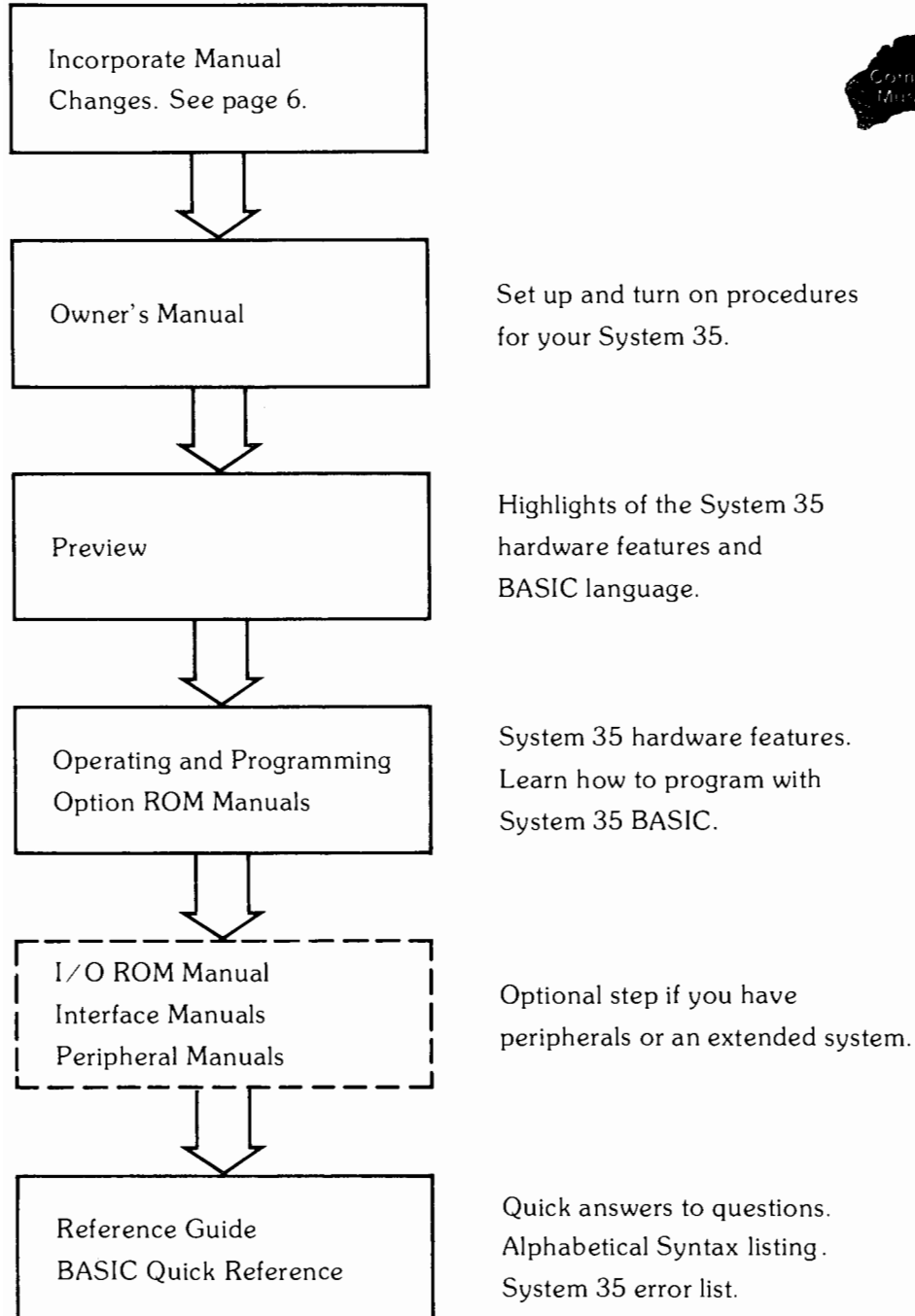
For those doing assembly language programming, see page 5 of this booklet.

## Beginner

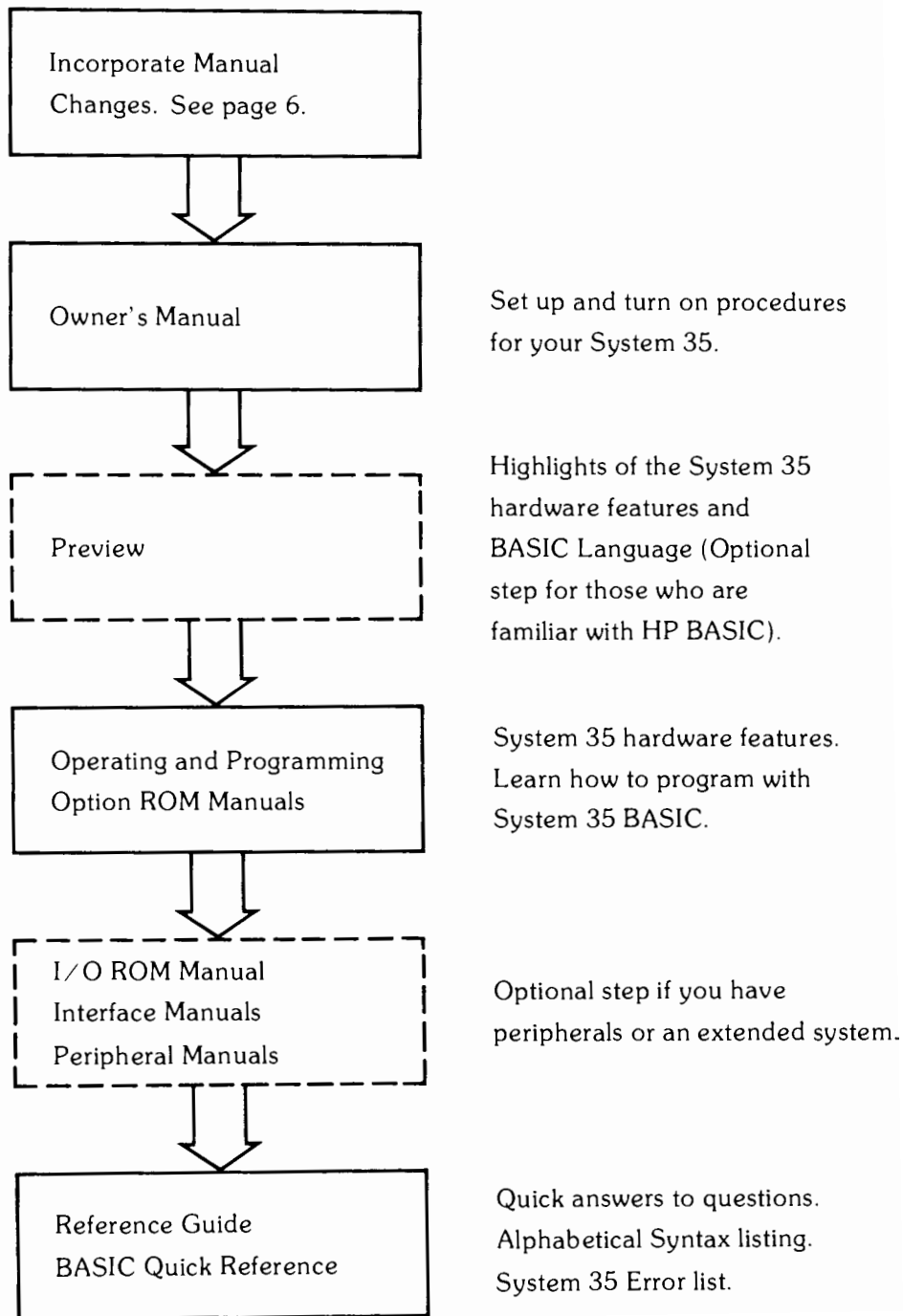


\* Not included with System 35 documentation. Textbooks covering these subjects may be found in most bookstores.

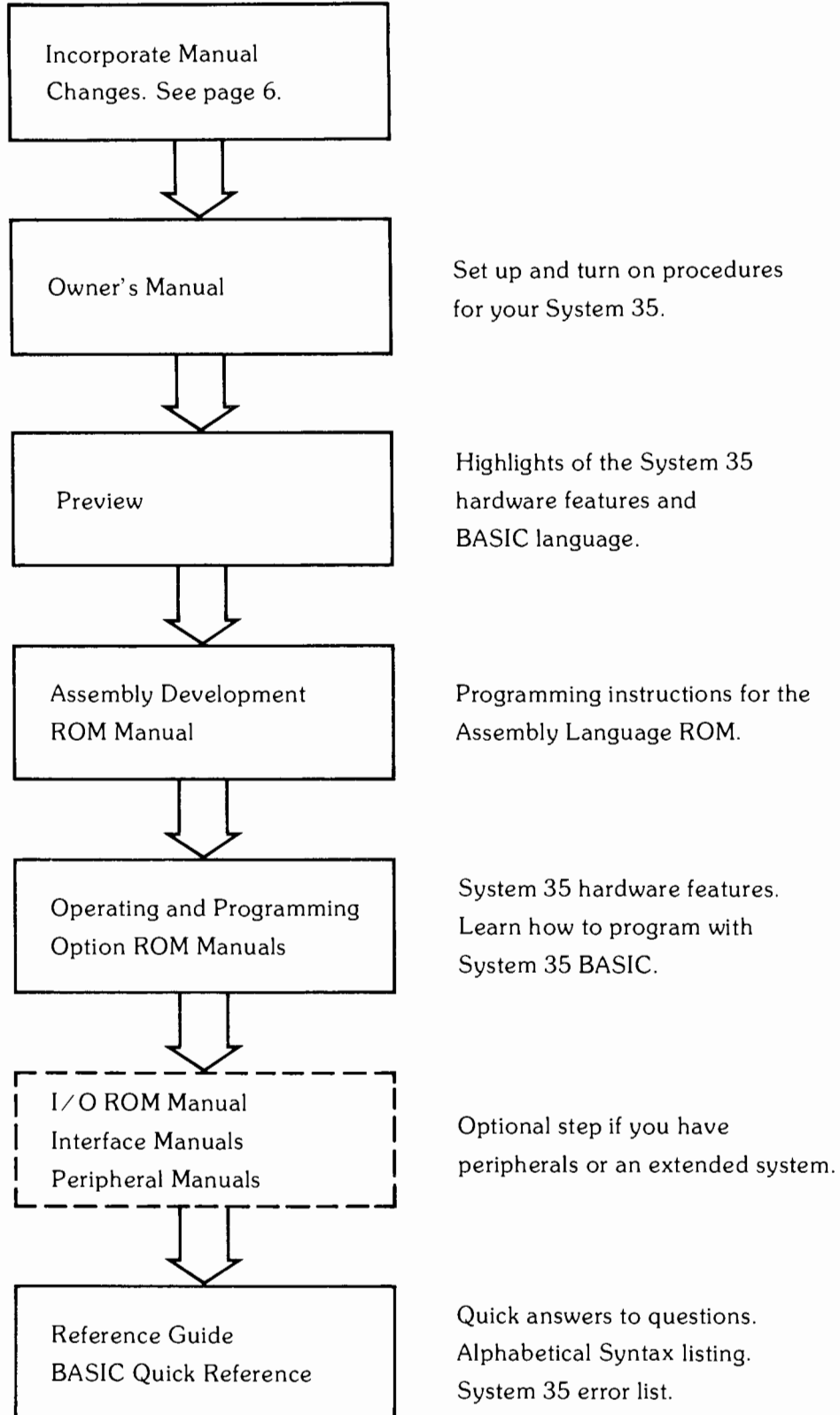
## Advanced



## Experienced



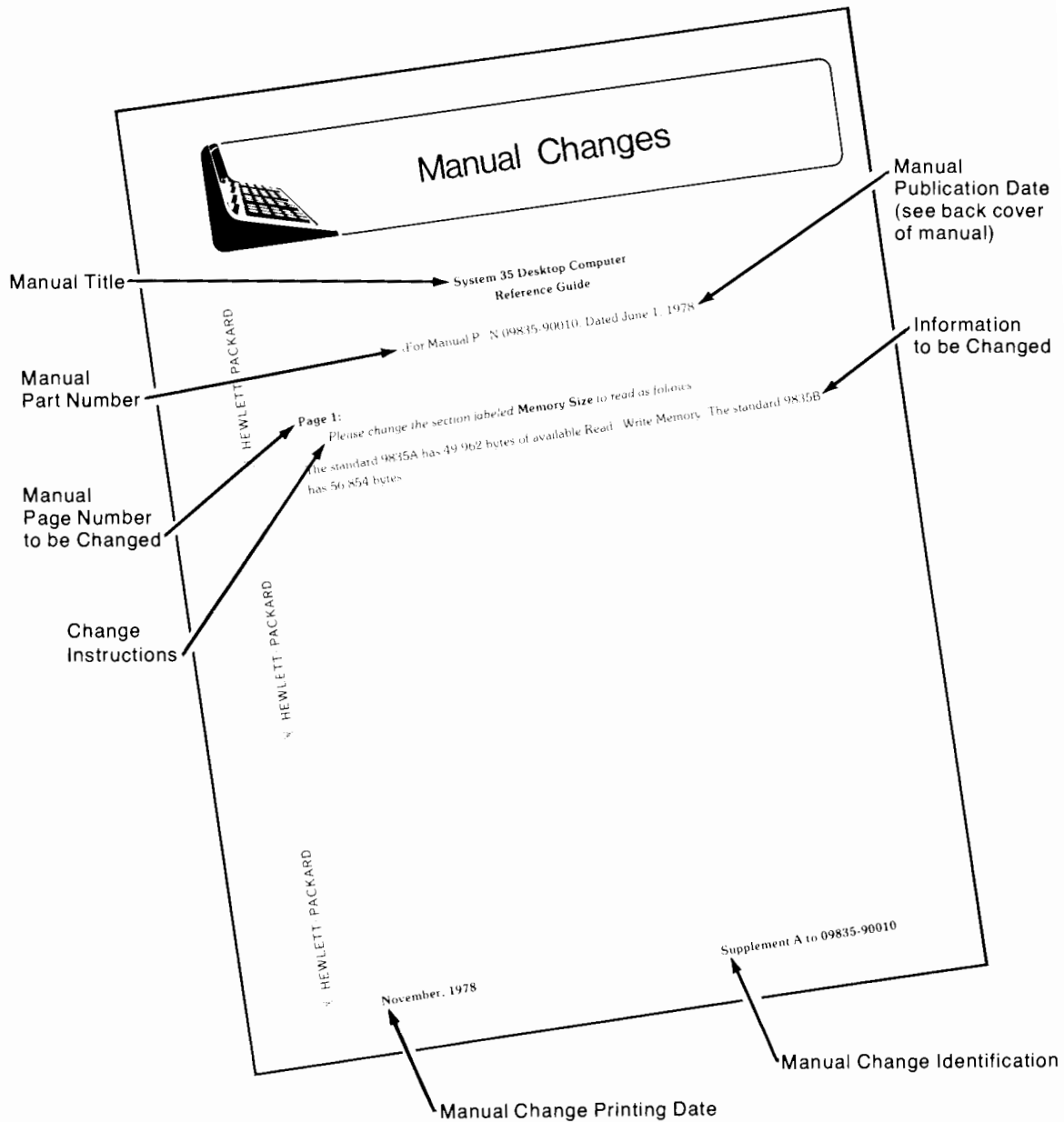
## Assembly Language





# Manual Changes

Manual changes are included for you so that you can update your manuals. You should note the information provided by the Manual Change and enter these changes into the appropriate manual. See the following example.



## System Manuals



- ✓ “Owner’s Manual” (P/N 09835-90005) is for the System 35 owner.  
It covers initial set-up, cleaning the computer, ROMs, the tape cartridge, and available peripherals and interfaces.
- ✓ “Beginner’s Guide” (P/N 09835-90001) is for the novice programmer.  
It covers the fundamentals of programming and the BASIC language. The beginner can then progress to the Operating and Programming Manual.
- ✓ “Operating and Programming” (P/N 09835-90000) is for all users.  
The features of the computer and its programming language are explained.
- ✓ “Preview” (P/N 09835-90002) is for the experienced BASIC programmer.  
It is a brief “demonstration” to introduce the hardware features and extensions to the BASIC language of the System 35.
- ✓ “Reference Guide” (P/N 09835-90010) is for all users.  
It is a reference to general machine features and all language syntax.
- ✓ “System Exerciser” (P/N 09835-90040) is for all users.  
Refer to this manual to check your desktop computer system if there is any doubt that it is operating properly. This manual also has a companion data cartridge.
- ✓ “BASIC Quick Reference” (P/N 09835-90015) is for all users.  
This is a pocket reference guide to the 9835 language syntax.

## Extended Programming Manuals

The following manuals are used in extended programming, and all require the installation of their associated ROM.

Plotter Programming Techniques Manual	P/N 09835-90050	✓
I/O Programming Manual	P/N 09835-90060	✓
Mass Storage Techniques Manual	P/N 09835-90070	
Assembly Language Quick Reference Manual	P/N 09835-90080	
Assembly Language Execution ROM Manual	P/N 09835-90082	
Assembly Language Development ROM Manual	P/N 09835-90083	

## Peripheral Manuals

The list below is comprised of manuals for peripheral devices that are specifically designed to be used with the System 35 Computer. In some cases there is a **programming manual** available to support the language necessary to use the device.

### 2631A Line Printer

Operator's Manual	P/N 02631-90901
Programming Manual	P/N 02631-90903
Reference Manual	P/N 02635-90905 ✓

### 9866A/B Thermal Printer

Peripheral Manual	P/N 09866-90001
-------------------	-----------------

### 9869A Card Reader

Peripheral Manual	P/N 09869-90002
<b>Programming Techniques Manual</b>	P/N 09845-90669

### 9871A Impact Printer

Installation Manual	P/N 09871-90035
Option 001 Operating and Service Manual	P/N 09871-90001
<b>Programming Techniques Manual</b>	P/N 09845-90671

### 9872A Plotter

Operating and Service Manual	P/N 09872-90000
<b>Programming Techniques Manual</b>	P/N 09835-90050 ✓

### 9874A Digitizer

Documentation	P/N 09874-90000 !
<b>Programming Techniques Manual</b>	P/N 09835-90674 ✓

### 9875A Cartridge Tape Unit

Installation and Operation Manual	P/N 09875-90000
<b>Programming Techniques Manual</b>	P/N 09845-90675

### 9878A I/O Expander

Installation and Service Manual	P/N 09878-90000
---------------------------------	-----------------

### 9881A Line Printer

Operator's Manual	P/N 02607-90005
-------------------	-----------------



9883A Tape Reader		
Operating and Programming Manual		P/N 09883-90001
<b>Programming Techniques Manual</b>		P/N 09845-90683

9884A Tape Punch		
Operating and Service Manual		P/N 09884-90000
<b>Programming Techniques Manual</b>		P/N 09845-90684

9885 Flexible Disk Drive		
Installation Manual		P/N 09885-90010
<b>Mass Storage Techniques Manual</b>		P/N 09835-90070

## Interface Manuals

The following manuals relate to the mainframe/peripheral interconnecting cable systems.

The Real Time Clock is a special interface device since it has an internal source of data. Because of this, it also has a programming manual.

98032A 16-bit Interface		
Installation and Service Manual		P/N 98032-90000

98033A BCD Interface		
Installation and Service Manual		P/N 98033-90000

98034A Revised HP-IB Interface		
Installation and Service Manual		P/N 98034-90000 ✓

98035A Real Time Clock Interface		
Installation and Operation Manual		P/N 98035-90000
<b>Programming Techniques Manual</b>		P/N 09845-90635

98036A Serial I/O Interface		
Installation and Service Manual		P/N 98036-90000

98040A Incremental Plotter Interface		
Installation and Service Manual		P/N 98040-90000

98041A Disc Interface		
Installation Manual		P/N 98041-90000



HEWLETT  PACKARD