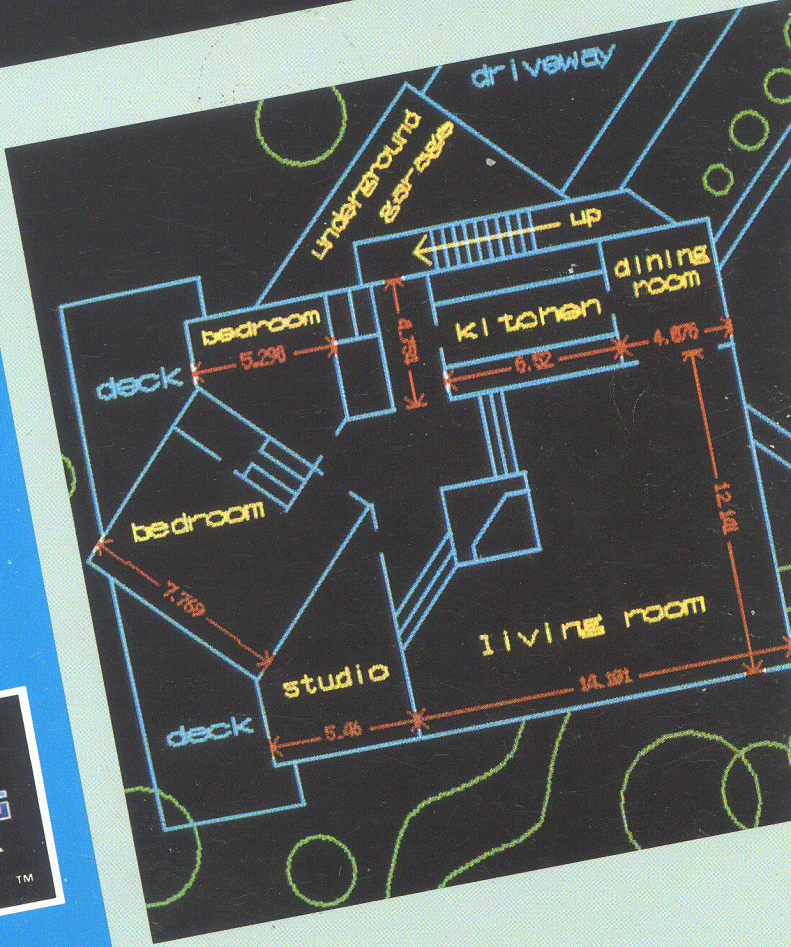


VALDRAW™



DRAWING WITH VALDRAW

Copyright © 1985 by Rising Star Industries
25500 Hawthorne Blvd., Suite 2000
Torrance, CA 90505

All rights reserved. No part of this publication may be reproduced, stored in a retrieval system or transmitted in any form or by any means, electronic, mechanical, photocopying, recording or otherwise, without the prior written permission of Rising Star Industries. No patent liability is assumed with respect to the use of the information contained herein. While every precaution has been taken in the preparation of this book, Rising Star Industries assumes no responsibility for errors or omissions. Neither is any liability assumed for damages resulting from the use of the information contained herein.

Cover design by Andre Clavel
Photography by Charley Freiberg
Technical illustrations by Robert C. Aviles and Dennis Dreyer

Contents

INTRODUCTION	1
HOW TO USE THIS MANUAL	2
FOR FURTHER ASSISTANCE	2
<hr/>	
PART I: VALDRAW BASICS	3
THE MOUSE	3
Mouse Controls	4
THE MAIN MENUS	5
The Tool Menu	5
The Line Menu	5
THE CURSOR	5
Drawing a Line	6
To Stop Drawing	7

UNDOING MISTAKES	7
STORING AND RETRIEVING DRAWINGS	7
A FINAL WORD	7

PART II: BEYOND BASICS **9**

DICTIONARY OF TASKS AND TOOLS	10
Blocks	10
Defining a Block	10
Rotating a Block	10
Templates from Blocks	12
Delete	12
Dimension Lines	13
Drawing Grid	13
Drawing Lines	13
Erasing the Screen	14
Gravity	14
Manual Cursor Positioning	15
Manual Line Entry	16
Merging Two Drawings	16
Paint Current Drawing	18
Panning	19
Ruler	20
Scaling	20
Shapes	21
Circles	21
Arcs	21
Rectangles	21
French Curves	22
Stop Drawing Lines	24
Text	24
T-Square	27
Undo a Deletion	27
Zoom	28
MAIN MENU FEATURES	29
The Line Menu	29
<T>-Square	29
<S> top Drawing the Line	29

<E>nter the Line's Dimensions	29
<M>ove Cursor to Location	29
The Tool Menu	30
<Z>oom	30
<Z>oom in closer	30
<R>eturn to full picture	30
<P>an view	30
<G>o to previous view, prior to last zoom	30
<D>elete	30
<U>ndo a Deletion	30
<C>ursor move	30
<T>ext	30
<E>nter Text	30
<D>elete Text	30
<A>dd a Dimension Line	30
<S>et Height of Dimension	30
<T>ext Height	31
<F>ixed Height Text Entry	31
<S>hapes	31
<C>ircle	31
<A>rc	31
<R>ectangle	31
<F>rench Curve	31
locks	31
<C>opy Block	31
<M>ove Block	31
<R>otate Block	31
<E>nlarge/Shrink Block	31
<A>lter Proportions	31
<N>ew Block Color	31
<S>tore Block to Disk	31
<D>elete Block	31
<M>iscellaneous	31
<C>hange data disks	31
<L>og in a different disk drive	31
<E>rase screen	31
<K>eep the drawing	31
<T>hrow the drawing away	31
<O>n-Screen Format	32
<G>rid on/off	32

<R>uler on/off	32
<D>efine Scale of Drawing	32
<E>nglish/Decimal Ruler	32
<S>elect Colors	32
<A>ll Colors on	32
lue on/off	32
<R>ed on/off	32
<P>urple on/off	32
<G>reen on/off	32
<C>yan on/off	32
<Y>ellow on/off	32
<W>hite on/off	32
oth grid & ruler on/off	32
<I>ntersection of grid Look-for	32
<P>oint Look-for	32
<L>ook-for both point & grid	32
<P>aint finished drawing	32
THE KEYBOARD	32
Function Keys	33
Special Keys	33
Numeric Keypad Function Keys	34
Arrow Keypad	34
Control Keys	34
Cursor Control from the Keyboard	35

PART III: APPENDIXES **37**

Appendix A: Installing Valdraw	37
Appendix B: Compatible Mice, Digitizers, and Plotters ..	43
Appendix C: Photographing Your Screen	45