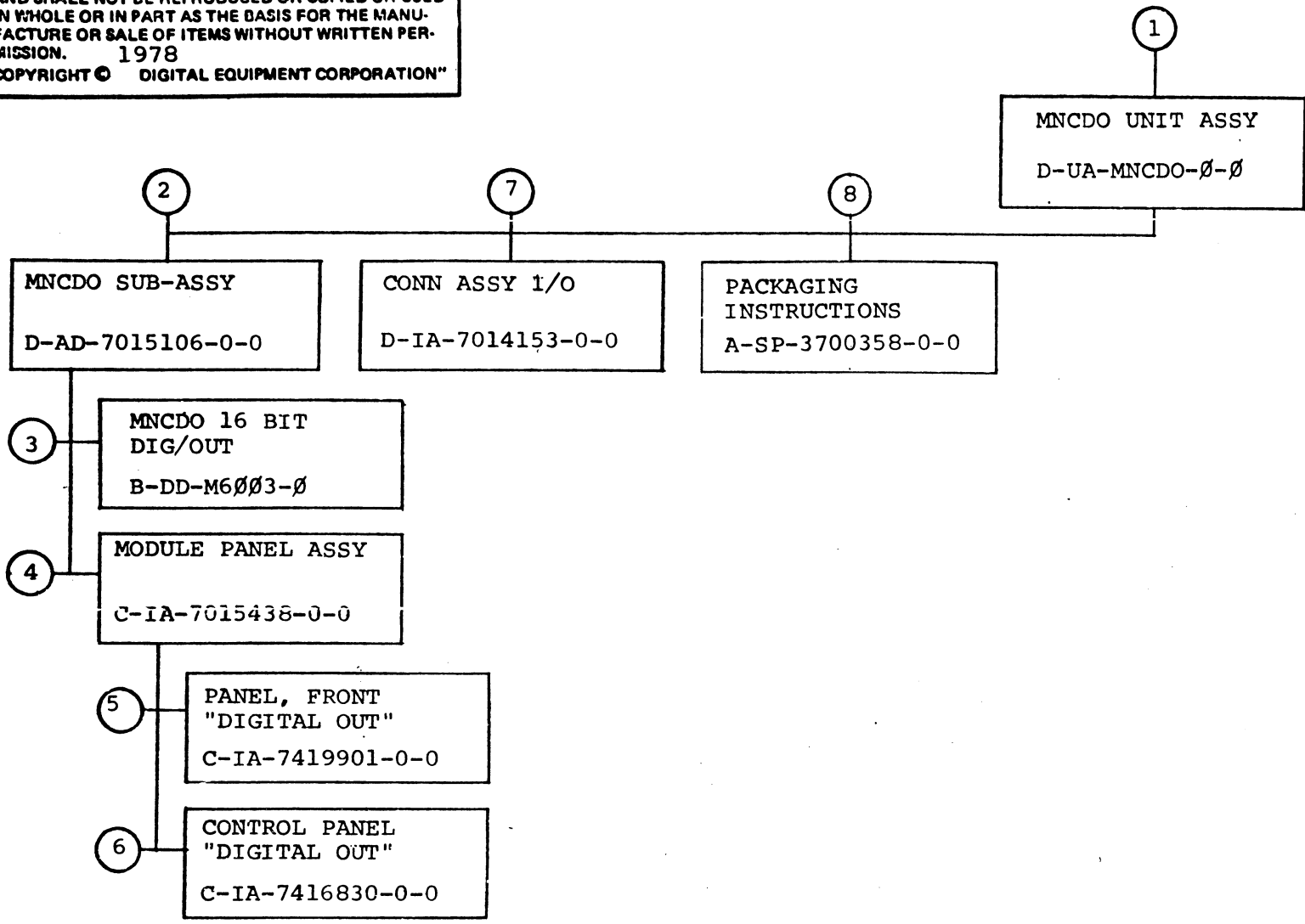






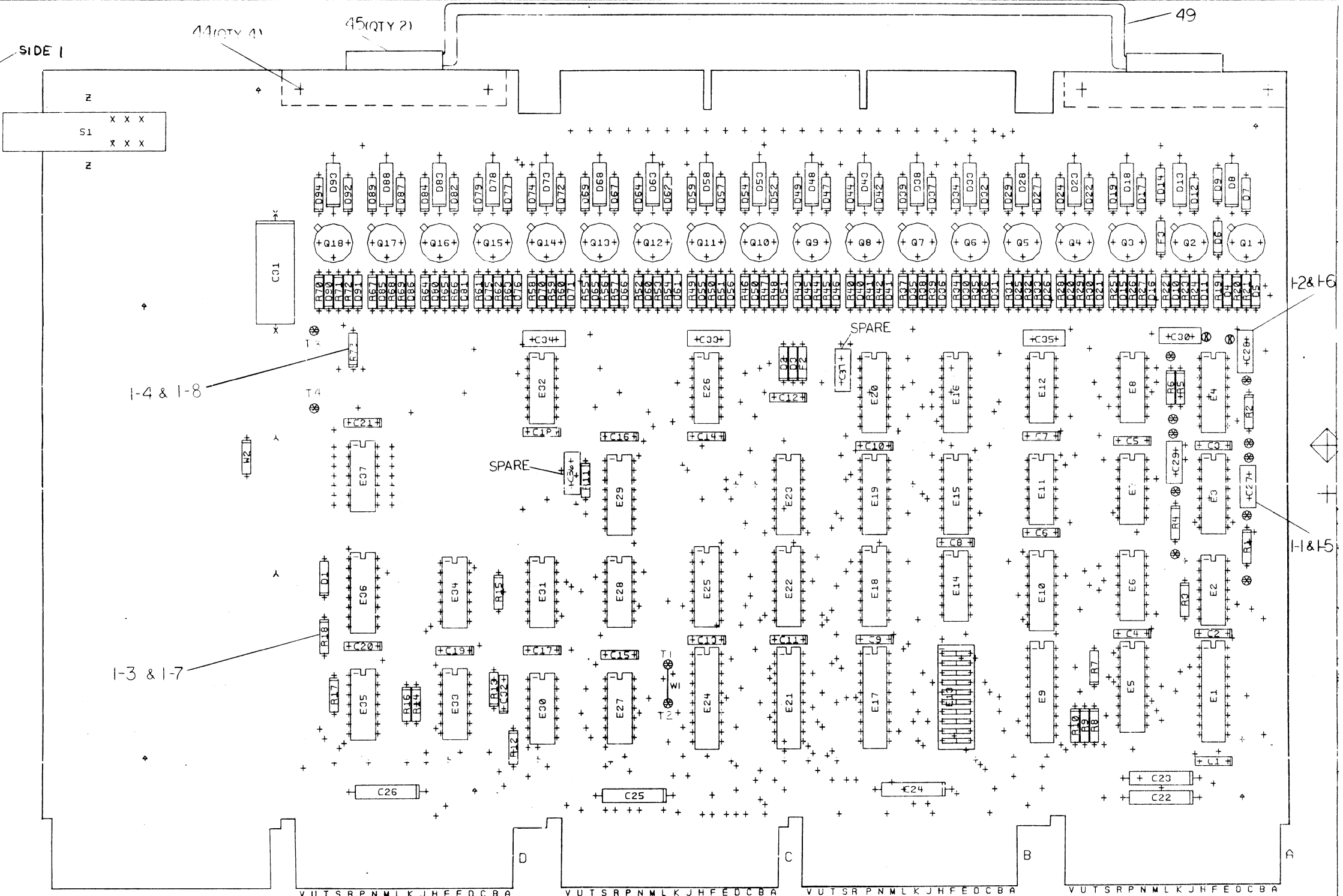
"THIS DRAWING AND SPECIFICATIONS, HEREIN, ARE THE PROPERTY OF DIGITAL EQUIPMENT CORPORATION AND SHALL NOT BE REPRODUCED OR COPIED OR USED IN WHOLE OR IN PART AS THE BASIS FOR THE MANUFACTURE OR SALE OF ITEMS WITHOUT WRITTEN PERMISSION. 1978  
 COPYRIGHT © DIGITAL EQUIPMENT CORPORATION"



TITLE	MNCDO UNIT ASSY	SHEET 2 OF 3	SIZE CODE B DD	NUMBER MNCDO-Ø	REV B
-------	-----------------	--------------	-------------------	-------------------	----------



THIS DRAWING AND SPECIFICATIONS, HEREIN, ARE THE PROPERTY OF DIGITAL EQUIPMENT CORPORATION AND SHALL NOT BE REPRODUCED OR COPIED IN WHOLE OR IN PART FOR THE BASIS FOR THE MANUFACTURE OR SALE OF ANY EQUIPMENT WITHOUT THE WRITTEN PERMISSION OF DIGITAL EQUIPMENT CORPORATION.



REWORK INSTRUCTION

- ECO #1  
 COMPONENT DELETES, SIDE 1  
 1-1 C27 (P/N 1000021)  
 1-2 C28 (P/N 1000021)  
 1-3 R18 (P/N 1300439)  
 1-4 F1 (P/N 9006735)
- COMPONENT ADDS SIDE  
 1-5 C27 (P/N 1000025)  
 1-6 C28 (P/N 1000025)  
 1-7 R18 (P/N 1302394)  
 1-8 R73 (P/N 1310881)

CHG	NO	REV	DATE	BY
1	1	E	11/78	AW
2	1	E	11/78	AW
3	1	E	11/78	AW

NOTES:

\_\_\_\_\_

\_\_\_\_\_

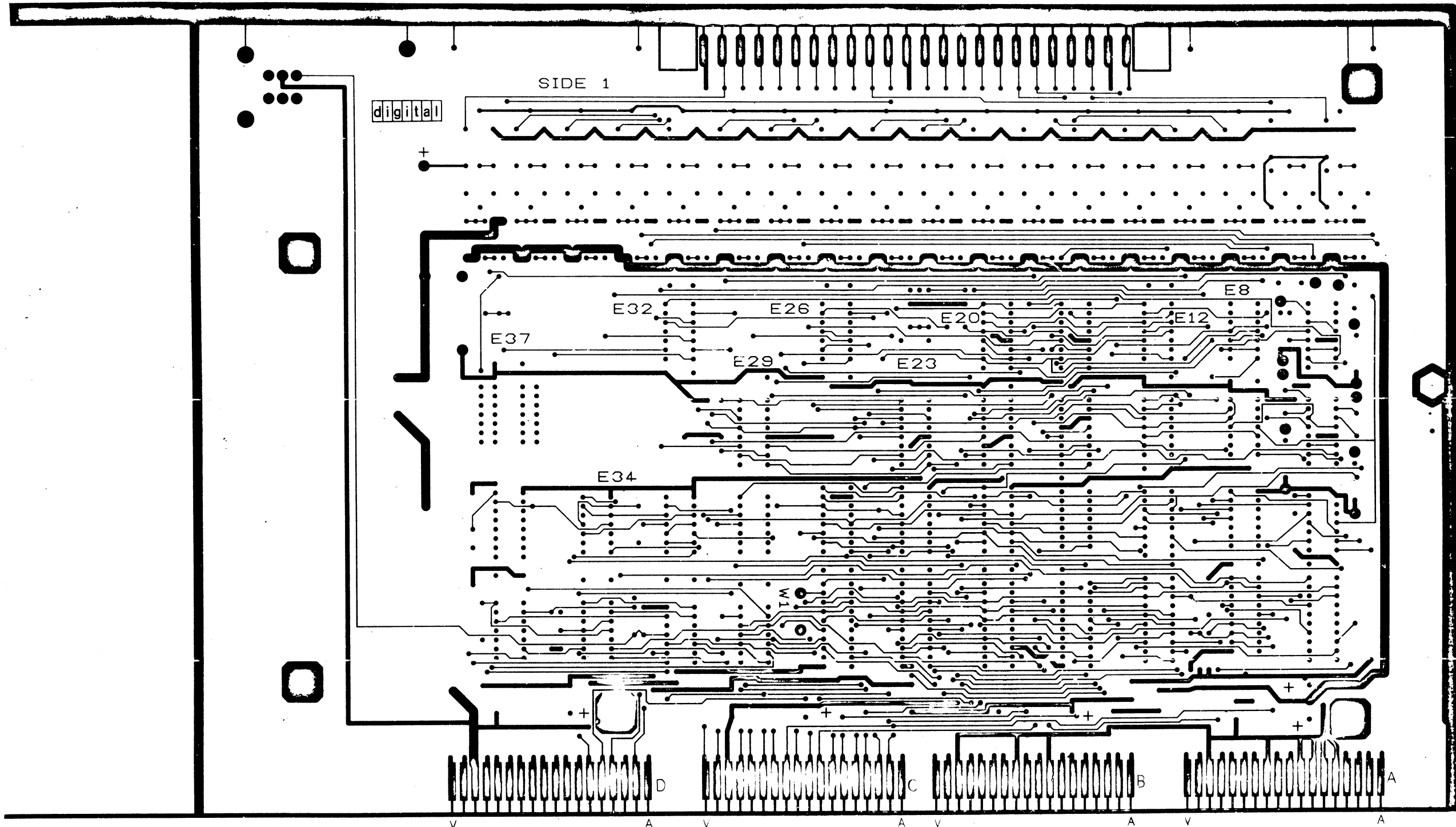
\_\_\_\_\_

\_\_\_\_\_

SIGNATURES		DATE	TITLE	
DRN.			digital	
CHK'D.			DIGITAL OUTPUT	
ENG.				
PROJ. ENG.				
PROD.				
SCALE	2/1		SIZE CODE	NUMBER
SHT.	1 OF 4		D UA	M6003-0-0
NEXT HIGHER ASSY. B-DD-M6003-0			REV	E

THIS DRAWING AND SPECIFICATIONS HEREIN ARE THE PROPERTY OF DIGITAL EQUIPMENT CORPORATION, AND SHALL NOT BE REPRODUCED OR USED IN WHOLE OR IN PART AS THE BASIS FOR THE MANUFACTURE OR SALE OF ITEMS WITHOUT WRITTEN PERMISSION. COPYRIGHT © 1977 DIGITAL EQUIPMENT CORPORATION.

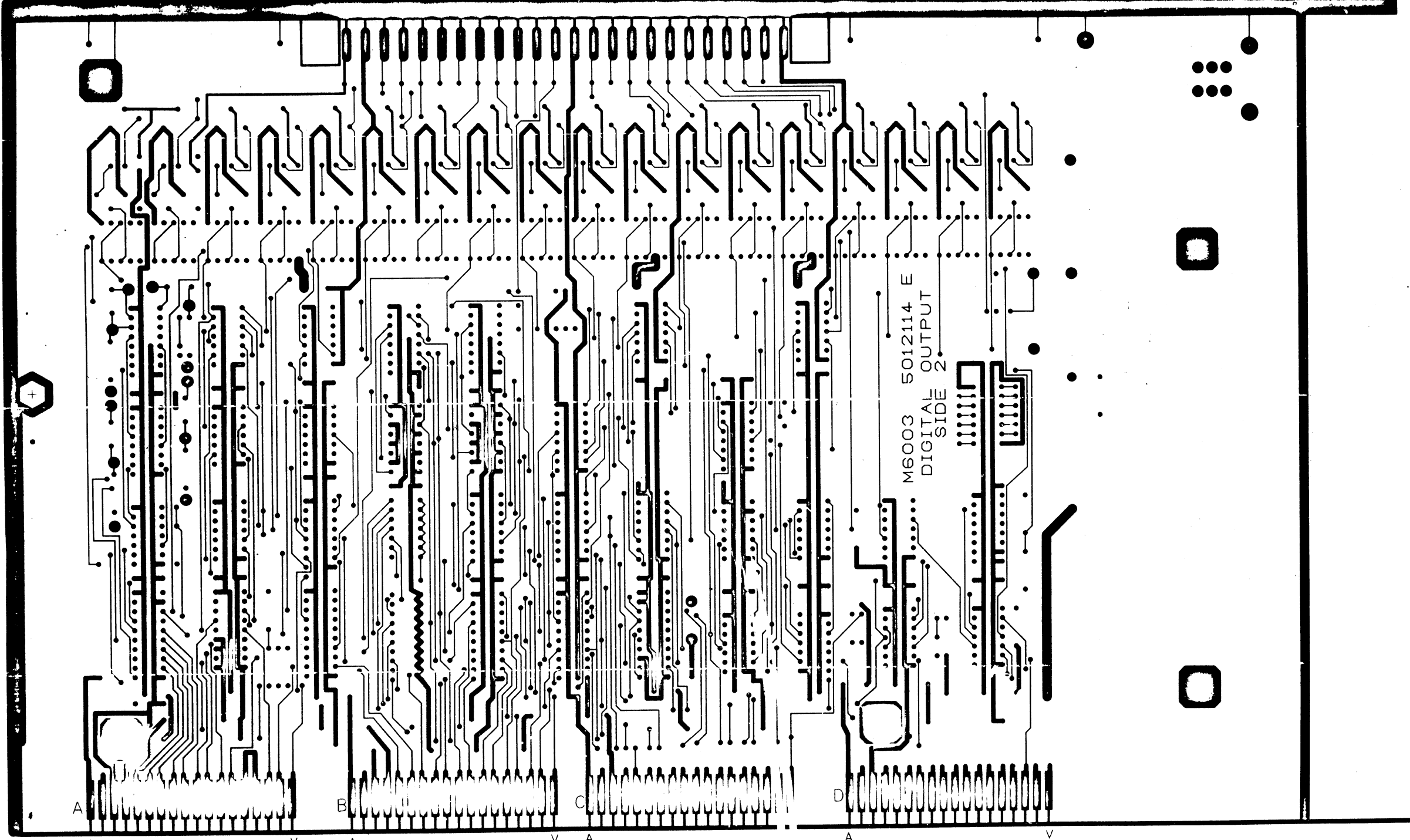
M6003 5012114 E



REVISIONS		
CHK	CHANGE NO	REV

TITLE	SIZE/CODE	NUMBER	REV.
DIGITAL OUTPUT	DJAM	M6003-0-0	E
SCALE 2/1	SHEET 2 OF 4	DIST.	

THIS DRAWING AND SPECIFICATIONS HEREIN ARE THE PROPERTY OF THE COMPANY AND ARE TO BE KEPT IN CONFIDENTIALITY. NO PART OF THIS DRAWING IS TO BE REPRODUCED OR TRANSMITTED IN ANY FORM OR BY ANY MEANS, ELECTRONIC OR MECHANICAL, INCLUDING PHOTOCOPYING, RECORDING, OR BY ANY INFORMATION STORAGE AND RETRIEVAL SYSTEM, WITHOUT THE WRITTEN PERMISSION OF THE COMPANY.



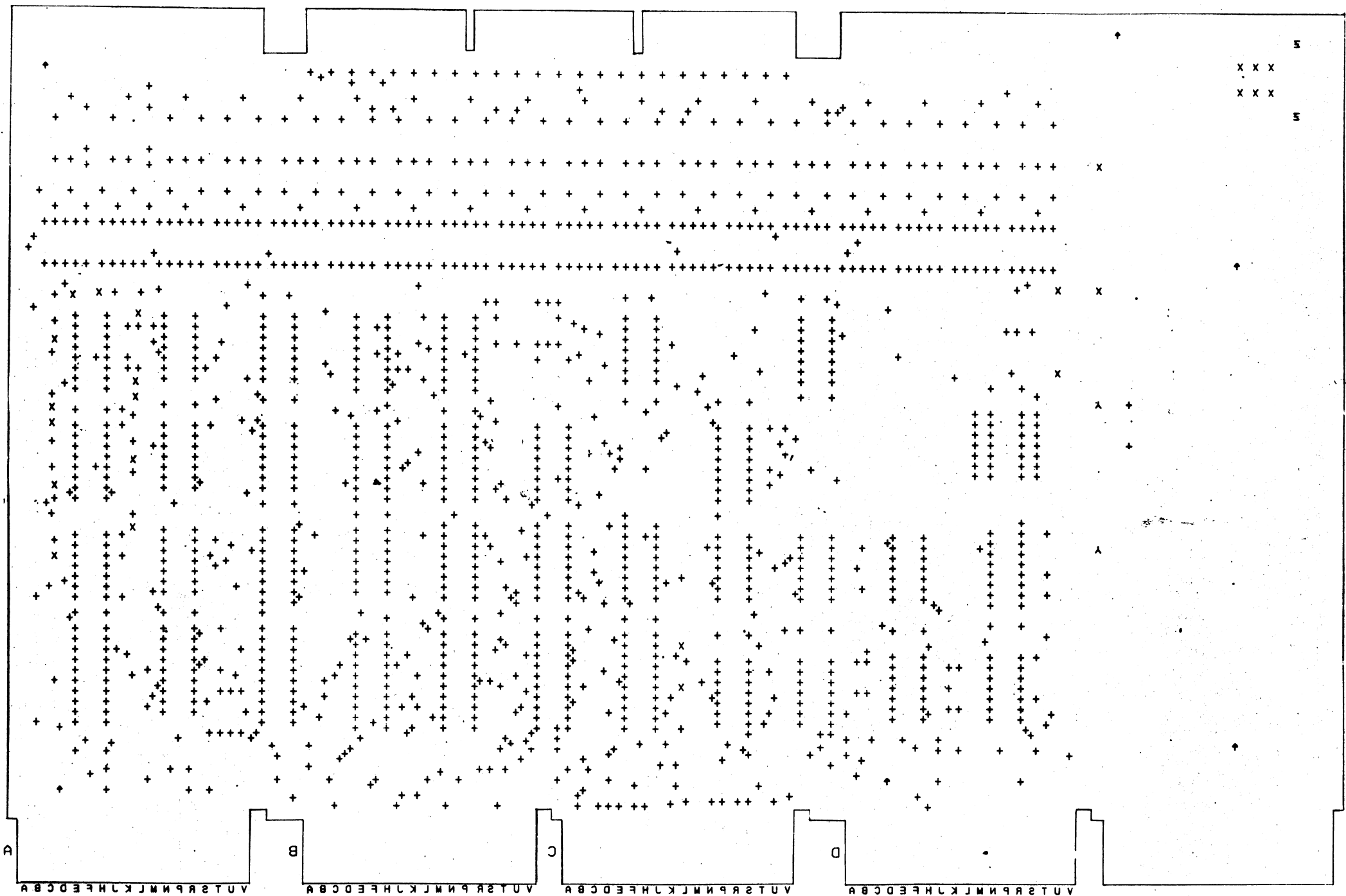
M6003 5012114 E  
DIGITAL OUTPUT  
SIDE 2

A V A V A V A V

REVISIONS		
CHK	CHANGE NO	REV

TITLE	SIZE CODE	NUMBER	REV.
DIGITAL OUTPUT	DVA	M6003-0-0	E
SCALE 2/1	SHEET 3	OF 4	DIST.

"THIS DRAWING AND SPECIFICATIONS HEREIN ARE THE PROPERTY OF DIGITAL EQUIPMENT CORPORATION AND SHALL NOT BE REPRODUCED OR COPIED OR USED IN WHOLE OR IN PART AS THE BASIS FOR THE MANUFACTURE OR SALE OF ITEMS WITHOUT WRITTEN PERMISSION. COPYRIGHT © 1977 DIGITAL EQUIPMENT CORPORATION"



REVISIONS		
CHK	CHANGE NO.	REV.

TITLE	SIZE CODE	NUMBER	REV.
DIGITAL OUTPUT	D U A M 6 0 0 3 - 0 - 0		E
SCALE 2/1	SHEET 4 OF 4	DIST.	

DIGITAL EQUIPMENT CORPORATION



# DIGITAL EQUIPMENT CORPORATION PARTS LIST

## QUANTITY / VARIATION

### NOTES:

1. SPARE LOCATIONS ARE: C36,C37  
E 37

DATE <i>8 AUG 77</i>	CHECKED <i>RW Taunter</i> DATE <i>18 Aug 77</i>	SECTION 1
DATE <i>24 OCT 77</i>	PROD <i>Don K. Dawson</i> DATE <i>25 OCT 77</i>	ISSUED SECTION 1

ITEM NO.	DRAWING NO.	PART NO.	DESCRIPTION	1	2	3	4	5	6	7	8	9	10	11	12	13	14	15	16	17	18	19	20	21	22	23	24	25	26	27	28	29	30	31	32	33	34	35	36	37	38	39	40	41	42	43	44	45	46	47	48	49	50	51	52	53	54	55	56	57	58	59	60	61	62	63	64	65	66	67	68	69	70	71	72	73	74	75	76	77	78	79	80	81	82	83	84	85	86	87	88	89	90	91	92	93	94	95	96	97	98	99	100	101	102	103	104	105	106	107	108	109	110	111	112	113	114	115	116	117	118	119	120	121	122	123	124	125	126	127	128	129	130	131	132	133	134	135	136	137	138	139	140	141	142	143	144	145	146	147	148	149	150	151	152	153	154	155	156	157	158	159	160	161	162	163	164	165	166	167	168	169	170	171	172	173	174	175	176	177	178	179	180	181	182	183	184	185	186	187	188	189	190	191	192	193	194	195	196	197	198	199	200	201	202	203	204	205	206	207	208	209	210	211	212	213	214	215	216	217	218	219	220	221	222	223	224	225	226	227	228	229	230	231	232	233	234	235	236	237	238	239	240	241	242	243	244	245	246	247	248	249	250	251	252	253	254	255	256	257	258	259	260	261	262	263	264	265	266	267	268	269	270	271	272	273	274	275	276	277	278	279	280	281	282	283	284	285	286	287	288	289	290	291	292	293	294	295	296	297	298	299	300	301	302	303	304	305	306	307	308	309	310	311	312	313	314	315	316	317	318	319	320	321	322	323	324	325	326	327	328	329	330	331	332	333	334	335	336	337	338	339	340	341	342	343	344	345	346	347	348	349	350	351	352	353	354	355	356	357	358	359	360	361	362	363	364	365	366	367	368	369	370	371	372	373	374	375	376	377	378	379	380	381	382	383	384	385	386	387	388	389	390	391	392	393	394	395	396	397	398	399	400	401	402	403	404	405	406	407	408	409	410	411	412	413	414	415	416	417	418	419	420	421	422	423	424	425	426	427	428	429	430	431	432	433	434	435	436	437	438	439	440	441	442	443	444	445	446	447	448	449	450	451	452	453	454	455	456	457	458	459	460	461	462	463	464	465	466	467	468	469	470	471	472	473	474	475	476	477	478	479	480	481	482	483	484	485	486	487	488	489	490	491	492	493	494	495	496	497	498	499	500	501	502	503	504	505	506	507	508	509	510	511	512	513	514	515	516	517	518	519	520	521	522	523	524	525	526	527	528	529	530	531	532	533	534	535	536	537	538	539	540	541	542	543	544	545	546	547	548	549	550	551	552	553	554	555	556	557	558	559	560	561	562	563	564	565	566	567	568	569	570	571	572	573	574	575	576	577	578	579	580	581	582	583	584	585	586	587	588	589	590	591	592	593	594	595	596	597	598	599	600	601	602	603	604	605	606	607	608	609	610	611	612	613	614	615	616	617	618	619	620	621	622	623	624	625	626	627	628	629	630	631	632	633	634	635	636	637	638	639	640	641	642	643	644	645	646	647	648	649	650	651	652	653	654	655	656	657	658	659	660	661	662	663	664	665	666	667	668	669	670	671	672	673	674	675	676	677	678	679	680	681	682	683	684	685	686	687	688	689	690	691	692	693	694	695	696	697	698	699	700	701	702	703	704	705	706	707	708	709	710	711	712	713	714	715	716	717	718	719	720	721	722	723	724	725	726	727	728	729	730	731	732	733	734	735	736	737	738	739	740	741	742	743	744	745	746	747	748	749	750	751	752	753	754	755	756	757	758	759	760	761	762	763	764	765	766	767	768	769	770	771	772	773	774	775	776	777	778	779	780	781	782	783	784	785	786	787	788	789	790	791	792	793	794	795	796	797	7
----------	-------------	----------	-------------	---	---	---	---	---	---	---	---	---	----	----	----	----	----	----	----	----	----	----	----	----	----	----	----	----	----	----	----	----	----	----	----	----	----	----	----	----	----	----	----	----	----	----	----	----	----	----	----	----	----	----	----	----	----	----	----	----	----	----	----	----	----	----	----	----	----	----	----	----	----	----	----	----	----	----	----	----	----	----	----	----	----	----	----	----	----	----	----	----	----	----	----	----	----	----	----	----	----	----	-----	-----	-----	-----	-----	-----	-----	-----	-----	-----	-----	-----	-----	-----	-----	-----	-----	-----	-----	-----	-----	-----	-----	-----	-----	-----	-----	-----	-----	-----	-----	-----	-----	-----	-----	-----	-----	-----	-----	-----	-----	-----	-----	-----	-----	-----	-----	-----	-----	-----	-----	-----	-----	-----	-----	-----	-----	-----	-----	-----	-----	-----	-----	-----	-----	-----	-----	-----	-----	-----	-----	-----	-----	-----	-----	-----	-----	-----	-----	-----	-----	-----	-----	-----	-----	-----	-----	-----	-----	-----	-----	-----	-----	-----	-----	-----	-----	-----	-----	-----	-----	-----	-----	-----	-----	-----	-----	-----	-----	-----	-----	-----	-----	-----	-----	-----	-----	-----	-----	-----	-----	-----	-----	-----	-----	-----	-----	-----	-----	-----	-----	-----	-----	-----	-----	-----	-----	-----	-----	-----	-----	-----	-----	-----	-----	-----	-----	-----	-----	-----	-----	-----	-----	-----	-----	-----	-----	-----	-----	-----	-----	-----	-----	-----	-----	-----	-----	-----	-----	-----	-----	-----	-----	-----	-----	-----	-----	-----	-----	-----	-----	-----	-----	-----	-----	-----	-----	-----	-----	-----	-----	-----	-----	-----	-----	-----	-----	-----	-----	-----	-----	-----	-----	-----	-----	-----	-----	-----	-----	-----	-----	-----	-----	-----	-----	-----	-----	-----	-----	-----	-----	-----	-----	-----	-----	-----	-----	-----	-----	-----	-----	-----	-----	-----	-----	-----	-----	-----	-----	-----	-----	-----	-----	-----	-----	-----	-----	-----	-----	-----	-----	-----	-----	-----	-----	-----	-----	-----	-----	-----	-----	-----	-----	-----	-----	-----	-----	-----	-----	-----	-----	-----	-----	-----	-----	-----	-----	-----	-----	-----	-----	-----	-----	-----	-----	-----	-----	-----	-----	-----	-----	-----	-----	-----	-----	-----	-----	-----	-----	-----	-----	-----	-----	-----	-----	-----	-----	-----	-----	-----	-----	-----	-----	-----	-----	-----	-----	-----	-----	-----	-----	-----	-----	-----	-----	-----	-----	-----	-----	-----	-----	-----	-----	-----	-----	-----	-----	-----	-----	-----	-----	-----	-----	-----	-----	-----	-----	-----	-----	-----	-----	-----	-----	-----	-----	-----	-----	-----	-----	-----	-----	-----	-----	-----	-----	-----	-----	-----	-----	-----	-----	-----	-----	-----	-----	-----	-----	-----	-----	-----	-----	-----	-----	-----	-----	-----	-----	-----	-----	-----	-----	-----	-----	-----	-----	-----	-----	-----	-----	-----	-----	-----	-----	-----	-----	-----	-----	-----	-----	-----	-----	-----	-----	-----	-----	-----	-----	-----	-----	-----	-----	-----	-----	-----	-----	-----	-----	-----	-----	-----	-----	-----	-----	-----	-----	-----	-----	-----	-----	-----	-----	-----	-----	-----	-----	-----	-----	-----	-----	-----	-----	-----	-----	-----	-----	-----	-----	-----	-----	-----	-----	-----	-----	-----	-----	-----	-----	-----	-----	-----	-----	-----	-----	-----	-----	-----	-----	-----	-----	-----	-----	-----	-----	-----	-----	-----	-----	-----	-----	-----	-----	-----	-----	-----	-----	-----	-----	-----	-----	-----	-----	-----	-----	-----	-----	-----	-----	-----	-----	-----	-----	-----	-----	-----	-----	-----	-----	-----	-----	-----	-----	-----	-----	-----	-----	-----	-----	-----	-----	-----	-----	-----	-----	-----	-----	-----	-----	-----	-----	-----	-----	-----	-----	-----	-----	-----	-----	-----	-----	-----	-----	-----	-----	-----	-----	-----	-----	-----	-----	-----	-----	-----	-----	-----	-----	-----	-----	-----	-----	-----	-----	-----	-----	-----	-----	-----	-----	-----	-----	-----	-----	-----	-----	-----	-----	-----	-----	-----	-----	-----	-----	-----	-----	-----	-----	-----	-----	-----	-----	-----	-----	-----	-----	-----	-----	-----	-----	-----	-----	-----	-----	-----	-----	-----	-----	-----	-----	-----	-----	-----	-----	-----	-----	-----	-----	-----	-----	-----	-----	-----	-----	-----	-----	-----	-----	-----	-----	-----	-----	-----	-----	-----	-----	-----	-----	-----	-----	-----	-----	-----	-----	-----	-----	-----	-----	-----	-----	-----	-----	-----	-----	-----	-----	-----	-----	-----	-----	-----	-----	-----	-----	-----	-----	-----	-----	-----	-----	-----	-----	-----	-----	-----	-----	-----	-----	-----	-----	-----	-----	-----	-----	-----	-----	-----	-----	-----	-----	-----	---

DIGITAL EQUIPMENT CORPORATION PARTS LIST				QUANTITY / VARIATION										NOTES:			
MADE BY <i>E. Wilson</i> DATE <i>18 AUG 77</i>		CHECKED <i>RW Caunter</i> DATE <i>18 Aug 77</i>		SECTION 1										REF DESIGNATION			
ENG <i>A. A. Arugh</i> DATE <i>24 OCT 77</i>		PROD <i>Dana R. Demmon</i> DATE <i>25 OCT 77</i>		ISSUED SECTION 1													
ITEM NO.	DRAWING NO.	PART NO.	DESCRIPTION														
17		1301424	RES. 680, 5%, 1/4W	2													R7, R10
18		1300295	RES. 330, 5%, 1/4W	20													R8, R9, R21, R24, R27, R30, R33, R36, R39, R42, R45, R48, R51, R54, R57, R60, R63, R66, R69, R72
19		1302394-00	RES. 30K 5%, 1/4W	1													R18
20		1310881-01	RES. 330, 1%, 1/4W, FUSIBLE	18													R20, R23, R26, R29, R32, R35, R38, R41, R44, R47, R50, R53, R56, R59, R62, R65, R68, R71
21		1310881-00	RES 1K, 1/4W, 1% FUSIBLE	1													R73
22		1509632	TRANS. DEC 2007	18													Q1 THRU Q18
23		1912729	I.C. DEC DC004	1													E1
24		1910155	I.C. DEC 7408	2													E2, E27
25		1910951	I.C. DEC 9602	2													E3, E4
26		1912730	I.C. DEC DC003	1													E5
27		1912801	I.C. DEC 74LS02	2													E6, E8,
28		1909686	I.C. DEC 7404	2													E7, E35
29		1913040	I.C. DEC DC005	4													E9, E17, E21, E24
30		1909934	I.C. DEC 8266	1													E10
31		1912816	I.C. DEC 74LS32	2													E11, E31
32		1909929	I.C. DEC 7417	3													E12, E26, E32
33		1911527	I.C. DEC 8097	3													E15, E19, E25
34		1912951	I.C. DEC 8556	4													E16, E20, E23, E29
35		1912697	I.C. DEC 74LS174	1													E18
36		1912853	I.C. DEC 74LS175	1													E22

E.C.O. NO.

"THIS DRAWING AND SPECIFICATIONS, HEREIN, ARE THE PROPERTY OF DIGITAL EQUIPMENT CORPORATION AND SHALL NOT BE REPRODUCED OR COPIED OR USED IN WHOLE OR IN PART AS THE BASIS FOR THE MANUFACTURE OR SALE OF ITEMS WITHOUT WRITTEN PERMISSION. COPYRIGHT © 1977 DIGITAL EQUIPMENT CORPORATION"

TITLE  
DIGITAL OUTPUT

ASSY NO.  
D-UA-M6003-0-0

SIZE  
B PL

NUMBER  
M6003-0-0

REV.  
E

SHEET 2 OF 3

INSERTION PARTS LIST DATA BASE REV

# DIGITAL EQUIPMENT CORPORATION PARTS LIST

QUANTITY / VARIATION

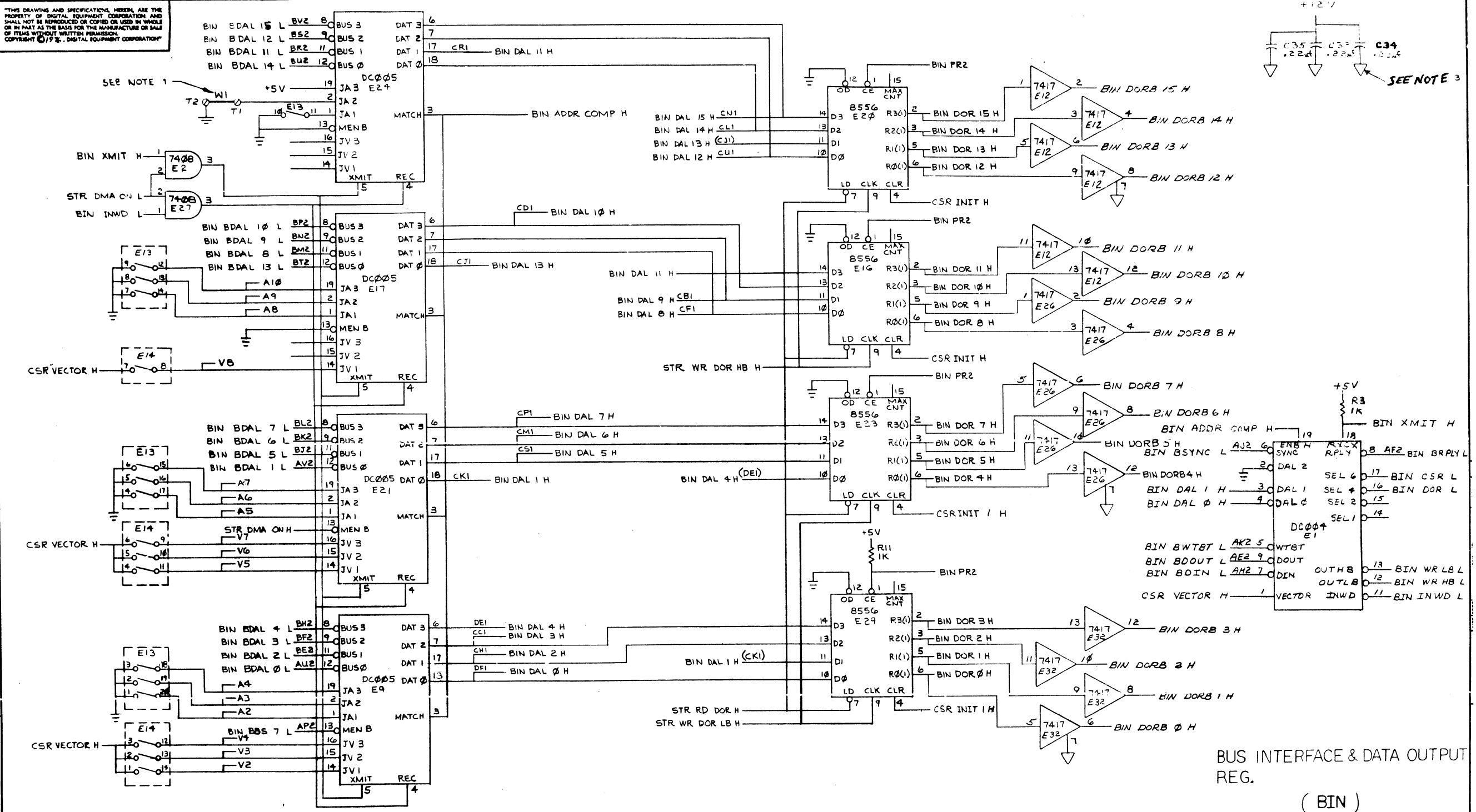
NOTES:

MADE BY <i>L. Wilson</i>	CHECKED <i>R. L. Counter</i>	SECTION
DATE <i>24 OCT 77</i>	DATE <i>18 Aug 77</i>	1
ENG <i>A. F. Arighi</i>	PROD <i>Dana R. Demcor</i>	ISSUED SECTION
DATE <i>24 OCT 77</i>	DATE <i>25 OCT 77</i>	1

ITEM NO.	DRAWING NO.	PART NO.	DESCRIPTION	QTY	VAR	UNIT	DIM	MATERIAL	FINISH	TOLERANCE	REF DESIGNATION
37		1912824	I.C. DEC 74LS74	3							E28, E33, E34
38		1911469	I.C. DEC 8640	1							E3Ø
39		1911116	I.C. DEC 8837	1							E36
40		1214937	SWITCH, PUSH PUSH	1							S1
41		9006735	SPLIT LUGS	16							T1 THRU T16
42		9009122	FUSE 62 MA	1							F2
43		9009185	JUMPER	2							W1, W2
44		9006732	EYELETS	4							
45	C-MD-7420192-0-0	7420192	HANDLE, RETAINER	2							
46		9006000-01	SCREW *2-56 X 3/16	2							
47		9006555	NUT HEX *2-56	2							
48		9006686	WASHER LOCK	2							
49	C-MD-7420191-0-0	7420191	HANDLE	1							

E.C.O. NO.		TITLE DIGITAL OUTPUT	ASSY NO. D-UA-M6ØØ3-Ø-Ø	SIZE <b>B</b>	CODE <b>PL</b>	NUMBER M6ØØ3-Ø-Ø	REV. <b>E</b>
"THIS DRAWING AND SPECIFICATIONS, HEREIN, ARE THE PROPERTY OF DIGITAL EQUIPMENT CORPORATION AND SHALL NOT BE REPRODUCED OR COPIED OR USED IN WHOLE OR IN PART AS THE BASIS FOR THE MANUFACTURE OR SALE OF ITEMS WITHOUT WRITTEN PERMISSION. COPYRIGHT © 1977 DIGITAL EQUIPMENT CORPORATION"			SHEET 3 OF 3		INSERTION PARTS LIST DATA BASE REV		

THIS DRAWING AND SPECIFICATIONS HEREIN ARE THE PROPERTY OF DIGITAL EQUIPMENT CORPORATION AND SHALL NOT BE REPRODUCED OR COPIED OR USED IN WHOLE OR IN PART AS THE BASIS FOR THE MANUFACTURE OR SALE OF ITEMS WITHOUT WRITTEN PERMISSION. COPYRIGHT © 1976 - DIGITAL EQUIPMENT CORPORATION



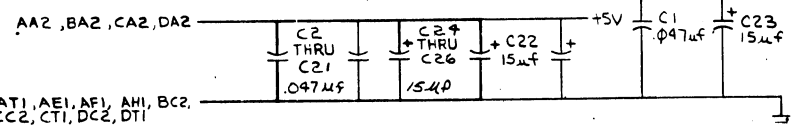
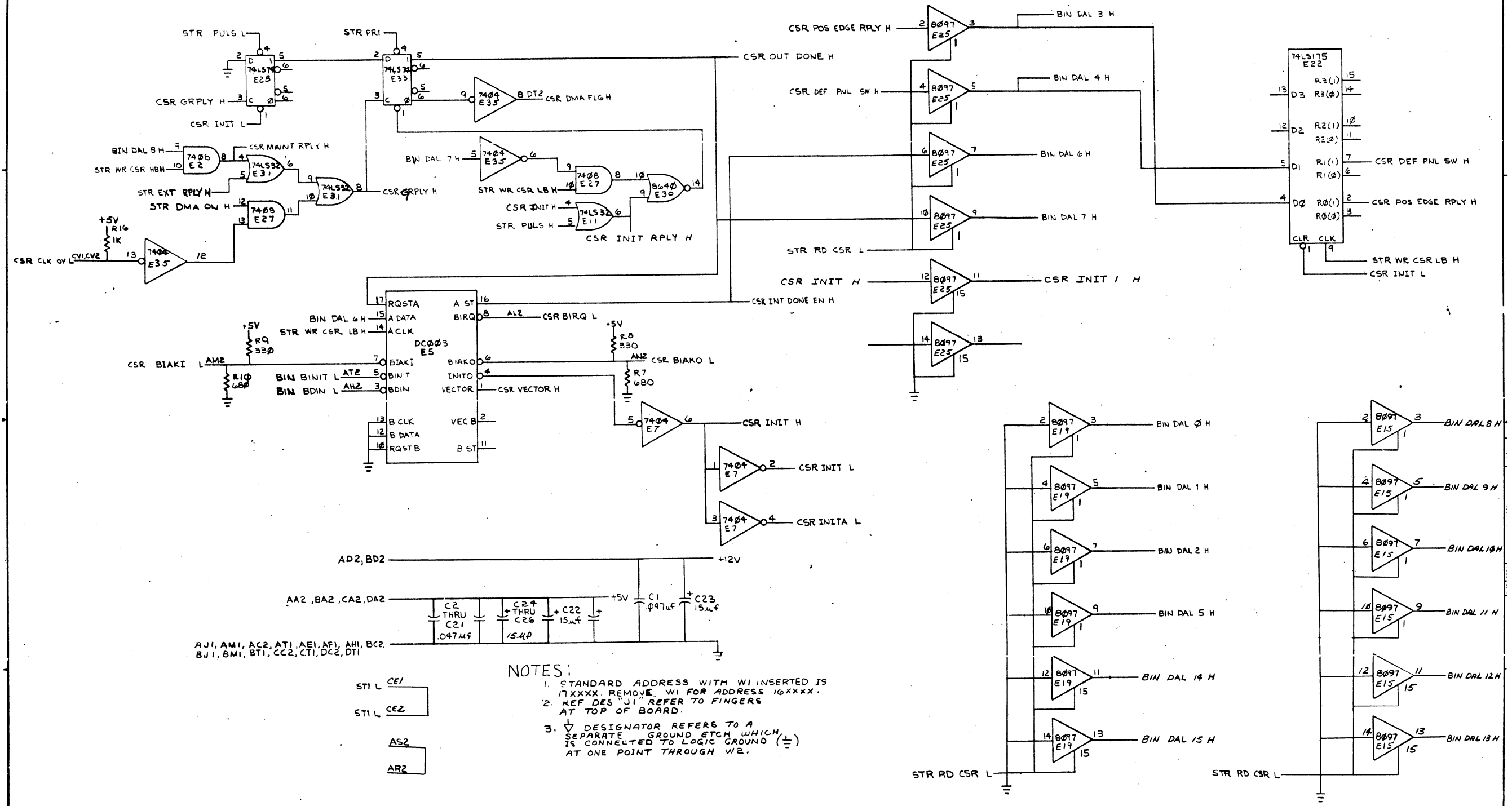
BUS INTERFACE & DATA OUTPUT REG.

( BIN )

REV.	1	DATE	1/18
CHK'D	MECCO3	MECCO1	E
CHG	MECCO3	MECCO1	E

DRN. <i>[Signature]</i>	FIRST USED ON	MNCDO	<b>digital</b>
CHK'D <i>[Signature]</i>	POB		
ENG. <i>[Signature]</i>	14		
PROJ. ENG. <i>[Signature]</i>	240177		
PROD. <i>[Signature]</i>	250177		
NEXT HIGHER ASSY.			
B-DD-M6003-0	SIZE CODE	NUMBER	REV.
SCALE	D CS	M6003-0-1	E
SHEET 1 OF 4	DIST.		

THIS DRAWING AND SPECIFICATIONS HEREIN ARE THE PROPERTY OF DIGITAL EQUIPMENT CORPORATION AND SHALL NOT BE REPRODUCED OR COPIED OR USED IN WHOLE OR IN PART AS THE BASIS FOR THE MANUFACTURE OR SALE OF ITEMS WITHOUT WRITTEN PERMISSION. COPYRIGHT © 1977 DIGITAL EQUIPMENT CORPORATION



- NOTES:
- STANDARD ADDRESS WITH W1 INSERTED IS 17XXXX. REMOVE W1 FOR ADDRESS 16XXXX.
  - REF DES "J1" REFER TO FINGERS AT TOP OF BOARD.
  - ▽ DESIGNATOR REFERS TO A SEPARATE GROUND ETCH WHICH IS CONNECTED TO LOGIC GROUND (⊥) AT ONE POINT THROUGH W2.

ST1 L CE1  
ST1 L CE2  
AS2  
AR2

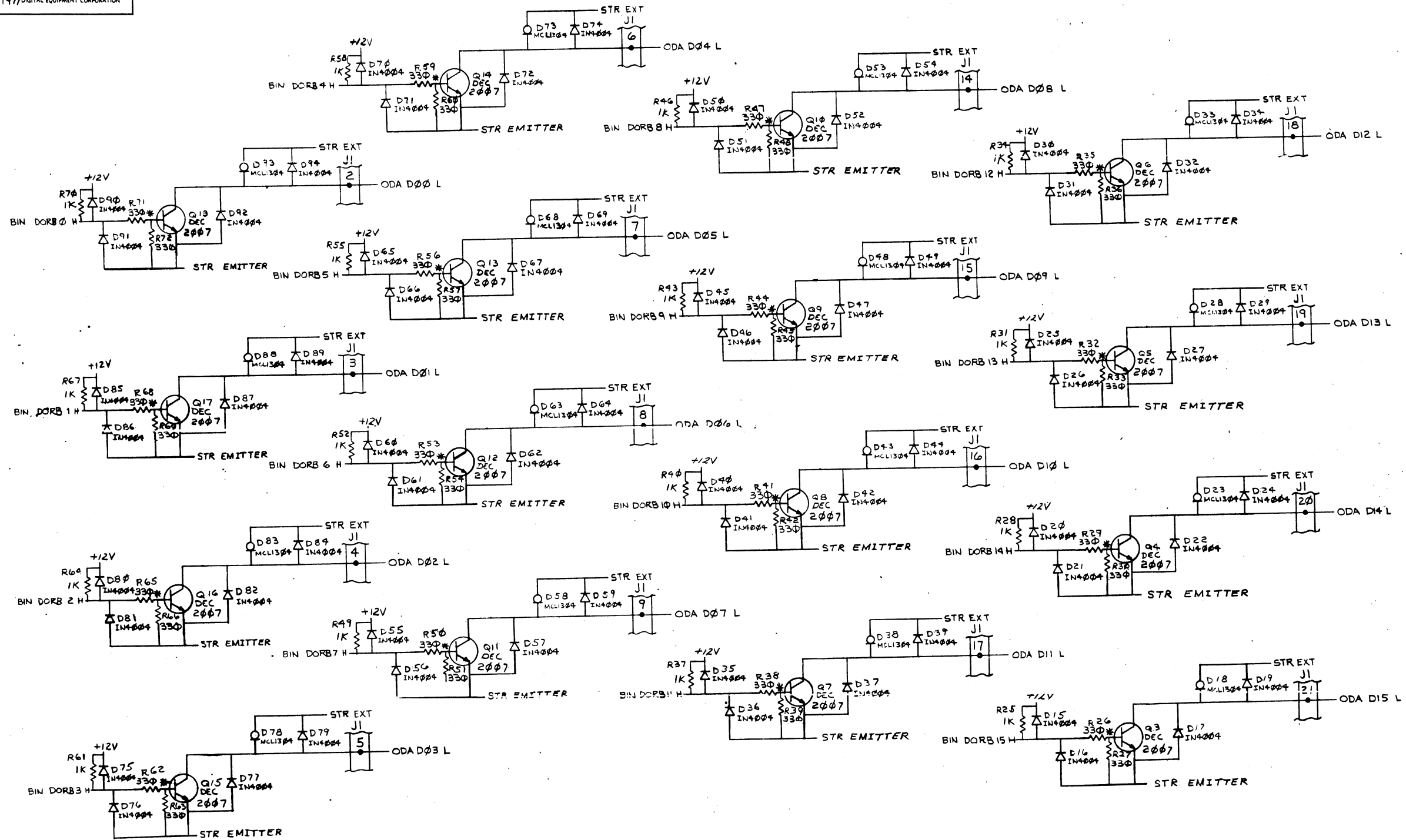
CONTROL & STATUS REG.& INTERRUPT (CSR)

REVISIONS		
CHK	CHANGE NO.	REV.

TITLE	DIGITAL OUTPUT	SIZE CODE	D CS	NUMBER	M6003-0-1	REV.	E
SCALE	SHEET 2 OF 4	DIST.					



"THIS DRAWING AND SPECIFICATIONS, HEREIN, ARE THE PROPERTY OF DIGITAL EQUIPMENT CORPORATION, AND SHALL NOT BE REPRODUCED OR COPIED OR USED IN WHOLE OR IN PART AS THE BASIS FOR THE MANUFACTURE OR SALE OF ITEMS WITHOUT WRITTEN PERMISSION. COPYRIGHT © 1977 DIGITAL EQUIPMENT CORPORATION"



OUTPUT DRIVERS (ODA)

REVISIONS		
CHK	CHANGE NO.	REV.

TITLE	SIZE/CODE	NUMBER	REV.
DIGITAL OUTPUT	D CS	M6003-0-1	E
SCALE	SHEET 4 OF 4	DIST.	

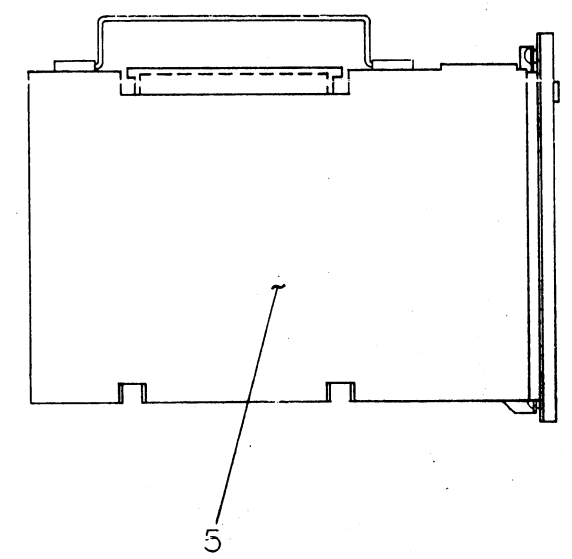
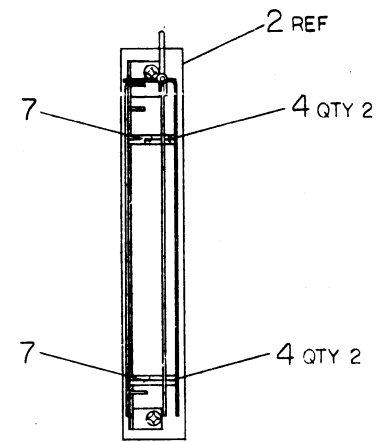
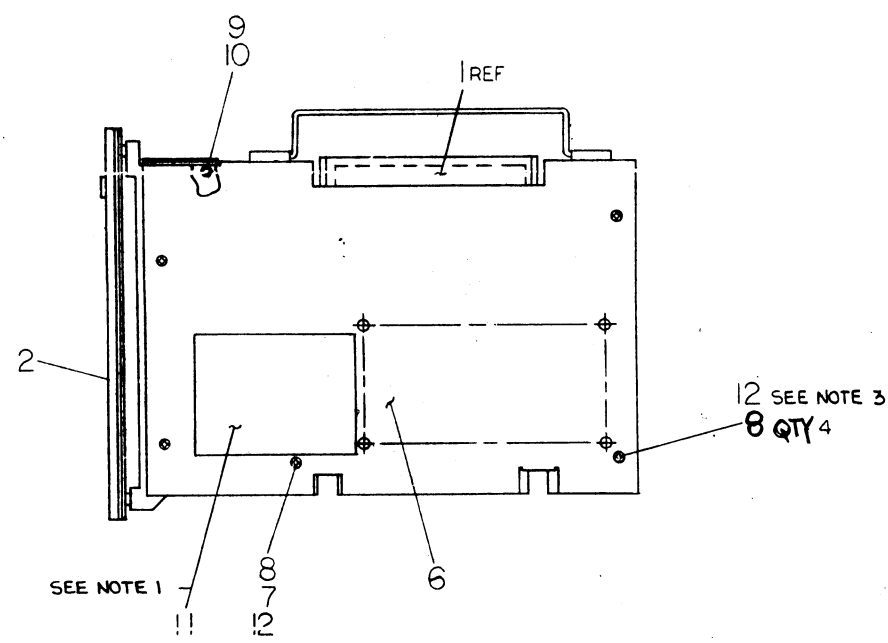
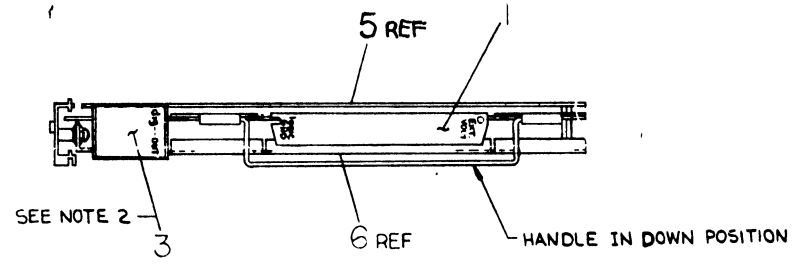




THIS DRAWING AND SPECIFICATIONS, HEREIN, ARE THE PROPERTY OF DIGITAL EQUIPMENT CORPORATION AND SHALL NOT BE REPRODUCED OR COPIED OR USED IN WHOLE OR IN PART AS THE BASIS FOR THE MANUFACTURE OR SALE OF ITEMS WITHOUT WRITTEN PERMISSION.  
 COPYRIGHT © 1977, DIGITAL EQUIPMENT CORPORATION

NOTES:

- ITEM #11 IS PUT ON BY ALIGNING THE RIGHT HAND EDGE OF DECAL UP AGAINST HOLES AND BOTTOM EDGE JUST ABOVE MOUNTING HOLE.
- ITEM #3 IS PUT ON BY ALIGNING THE TOP EDGE AND RIGHT HAND EDGE EVEN WITH THE TOP EDGE AND RIGHT HAND EDGE OF ITEM #5.
- USING ITEM #12 ADD ONE DROP TO EACH LOCATION.



DESCRIPTION	DWG./PART NO.	ITEM NO.
PACKAGING INSTRUCTIONS	A-SP-3700358-03	14
CHKOUT & ACCEPT. PROCEDURE	A-SP-MNCDO-0-3	13
LOCKTITE	9009321	12
DECAL, INFORMATION (MNCDO)	A-DC-3615264-4-0	11
NUT, KEPS #6-32	9008185	10
WASHER, FLAT	9006653	9
SCR, FLAT HD #6-32 x .25	9006020-02	8
SPACER, THREADED #6-32 x .88	9006861	7
PLATE, COMP. SIDE	D-MD-7419869-0-0	6
PLATE, ETCH SIDE	D-IA-7419868-0-0	5
SPACER, THREADED #6-32 x .25	9006841	4
DECAL, I/O SCHEMATIC	A-DC-3615260-4-0	3
MNCDO SUB-ASSY	D-AD-7015106-0-0	2
CONN ASSY, I/O	D-IA-7014153-5-0	1

REV.	CHANGE NO.	REV.
A	1	A

CHK: EDP  
 MNCDO-MR002  
 A-FLZ  
 5/10/78

UNLESS OTHERWISE SPECIFIED DIMENSIONS ARE IN INCHES

ANGLES 30° 30'	CLASS OF ACCURACY (CHECK ONE)	NOMINAL DIMENSION RANGE INCHES					
		OVER TO	OVER TO	OVER TO	OVER TO	OVER TO	OVER TO
SURFACE QUALITY IN	MEDIUM	±.004	±.008	±.012	±.016	±.024	±.04
	PREFERRED	±.012	±.016	±.025	±.04	±.063	±.1

QUANTITY & VARIATION: MICROINCHES  
 THIRD ANGLE PROJECTION  
 REMOVE BIRDS AND BREAK SHARP CORNERS  
 PARTS LIST: NONE  
 TITLE: MNCDO UNIT ASSY  
 NUMBER: 1-00-MNCDO-0  
 SCALE: 1/2  
 SIZE CODE: D UA  
 NUMBER: MNCDO-0-0  
 REV. A

